



ST. BERNARD PARISH NEW PUBLIC LIBRARY

3121 E. JUDGE PEREZ DR.
 MERAUX, LOUISIANA 70075



DESIGN DEVELOPMENT DOCUMENTS

12/20/19

OWNER:

ST. BERNARD PARISH
 DONALD R. BOURGEOIS,
 CAPITAL PROJECT SUPERVISOR
 DBOURGEOIS@SBPG.NET
 504.410.3092

USER

ST. BERNARD PARISH
 PUBLIC LIBRARY CONTROL BOARD
 PATRICE CUSIMANO
 PATRICECUSIMANO60@GMAIL.COM
 PHONE

PROJECT MANAGER

LANDRY MANAGEMENT CONSULTANTS
 DOUG LANDRY
 DDLANDRY@LANDRYMANAGEMENT.COM
 PHONE

ARCHITECT

MATHES BRIERRE ARCHITECTS -
 ARCHITECTS BEAZLEY MOLIERE
 A JOINT VENTURE
 ALBERT MOLIERE
 ALMOLIERE@ARCHBM.COM
 337.233.0614

CIVIL ENGINEER

MEYER ENGINEERS, LLC
 DONOVAN DUFFY, P.E.
 DDUFFY@MEYER-E-L.COM
 504.885.9892

STRUCTURAL ENGINEER

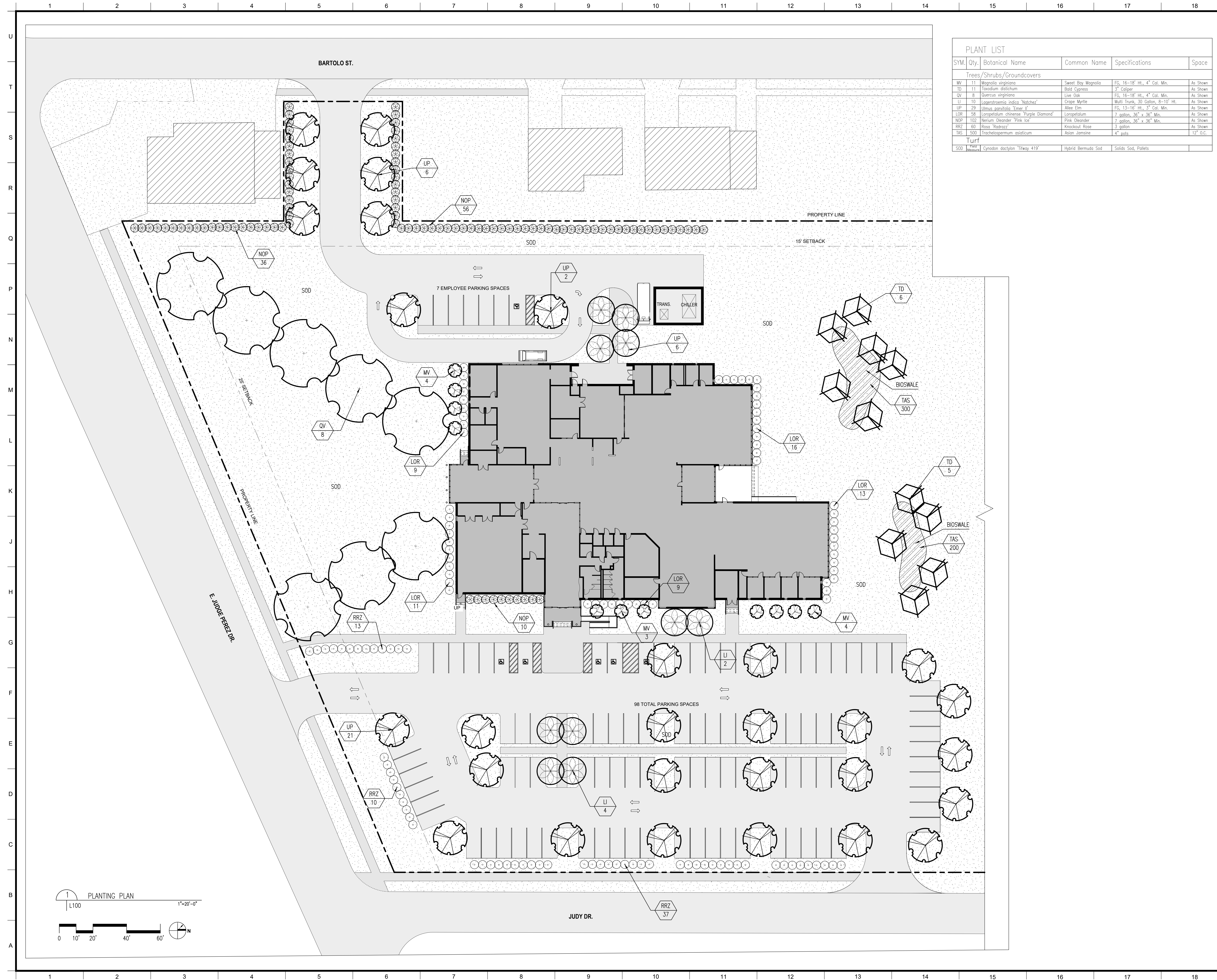
MORPHY MAKOFSKY
 JAMIE L. SAXON P.E.
 J_SAXON@MMI-ENG.COM
 504.488.1317

MECH., ELEC. & PLUMB. ENGINEERS

GVA ENGINEERING, LLC
 LEON PESSES
 LPESSES@GVAENGINEERING.COM
 504.780.9330

LANDSCAPE ARCHITECT

MATHES BRIERRE ARCHITECTS
 KEITH SCARMUZZA
 KSCARMUZZA@MATHESBRIERRE.COM
 504.586.9303



PLANT LIST					
SYM.	Qty.	Botanical Name	Common Name	Specifications	Space
Trees/Shrubs/Groundcovers					
MV	11	Magnolia virginiana	Sweet Bay Magnolia	FG, 16-18' Ht., 4" Cal. Min.	As Shown
TD	11	Taxodium distichum	Bald Cypress	3" Caliper	As Shown
QV	8	Quercus virginiana	Live Oak	FG, 16-18' Ht., 4" Cal. Min.	As Shown
LI	10	Lagerstroemia indica 'Natchez'	Crape Myrtle	Multi-Trunk, 30 Gallon, 8-10' Ht.	As Shown
UP	29	Ulmus parvifolia 'Etna II'	Elm	FG, 13-16' Ht., 3" Cal. Min.	As Shown
LOR	58	Loropetalum chinense 'Purple Diamond'	Loropetalum	7 gallon, 36" x 36" Min.	As Shown
NOP	102	Nerium Oleander 'Pink Ice'	Pink Oleander	7 gallon, 36" x 36" Min.	As Shown
RRZ	60	Rosa 'Rozraz'	Knockout Rose	3 gallon	As Shown
TAS	500	Trachypogon asiaticum	Asian Jasmine	4" pots	12" O.C.
Turf					
SOD	Measure	Dynonon dactylon 'Turfway 419'	Hybrid Bermuda Sod	Solids Sod, Pallets	

MATERIALS KEYING/ GENERAL NOTES

NO.	REVISION/SUBMISSIONS	DATE

KEY PLAN

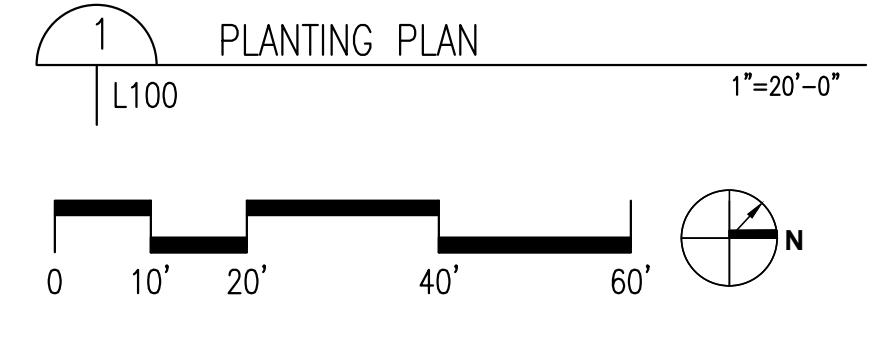
Mathes Brierre
ARCHITECTS

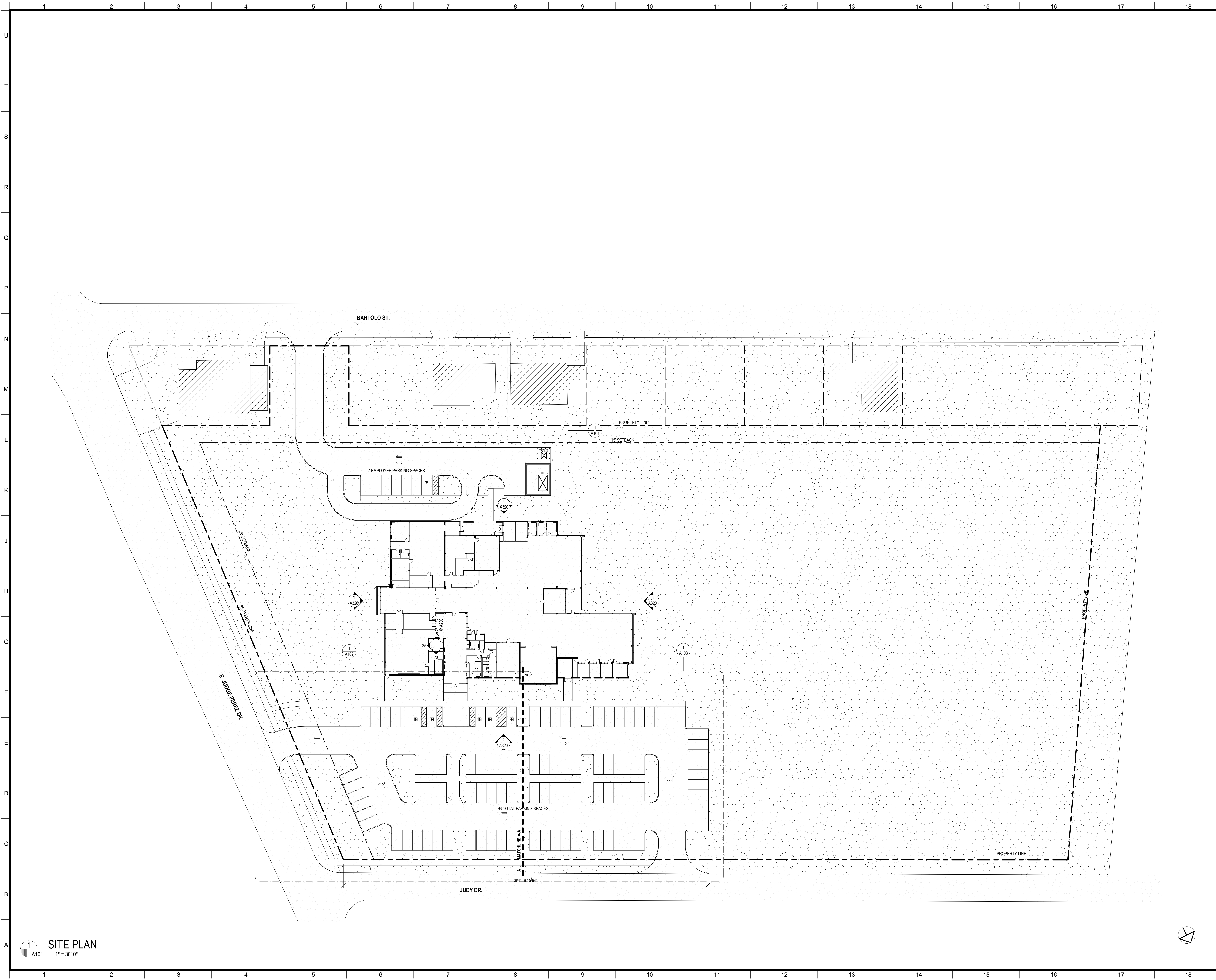
201 St. Charles Avenue, Forty First Floor
New Orleans, Louisiana 70170-4100
Voice: 504.586.9303 Fax: 504.582.1305
architecture@mathesbrierre.com

PROJECT TITLE

**ST. BERNARD
PARISH PUBLIC
LIBRARY**

DESIGNED BY	KS	CHECKED BY	KS
DRAWN BY	KS	DATE	12.20.2019
SHEET TITLE PLANTING PLAN			
PROJECT NO.	MBA-11884	SHEET NO.	L100
	ABM-201803		





No.	Description	Date

KEY PLAN

Mathes Brierre + ARCHITECTS **BM ARCHITECTS BEAZLEY MOLIÈRE**
 A JOINT VENTURE
 201 St. Charles Avenue, Forty First Floor
 New Orleans, Louisiana 70170-4100
 Voice: 504.586.9303, Fax: 504.582.1305
 300 Heymann Blvd.
 Lafayette, Louisiana 70503
 337.233.0614

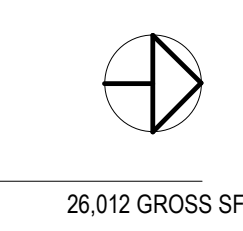
PROJECT TITLE
ST. BERNARD PARISH PUBLIC LIBRARY
 ST. BERNARD PARISH
 DESIGN DEVELOPEMENT

DESIGNED BY	Designer	CHECKED BY	Checker
DRAWN BY	Author	DATE	12.20.19
SHEET TITLE SITE PLAN			
PROJECT NO.	MBA - 11884 ABM - 201803	SHEET NO.	A101

1 SITE PLAN
 A101 1" = 30'-0"



1 FLOOR PLAN
A110 1/8" = 1'-0"



26,012 GROSS SF.

No.	Description	Date

KEY PLAN

Mathes Brierre + **ABM**
ARCHITECTS ARCHITECTS BEAZLEY MOLIÈRE
A JOINT VENTURE

201 St. Charles Avenue, Forty First Floor
New Orleans, Louisiana 70170-4100
Voice: 504.586.5303. Fax: 504.582.1305

300 Heymann Blvd.
Lafayette, Louisiana 70503
337.233.0614

PROJECT TITLE

ST. BERNARD PARISH PUBLIC LIBRARY

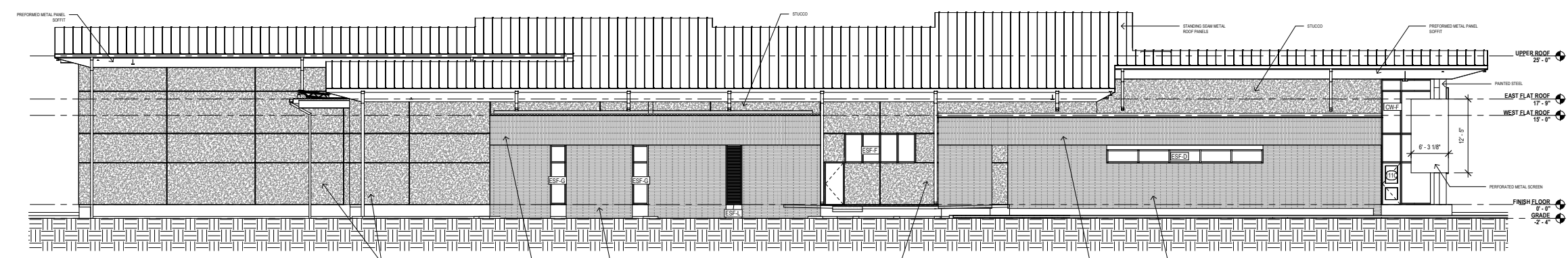
ST. BERNARD PARISH

DESIGN DEVELOPMENT

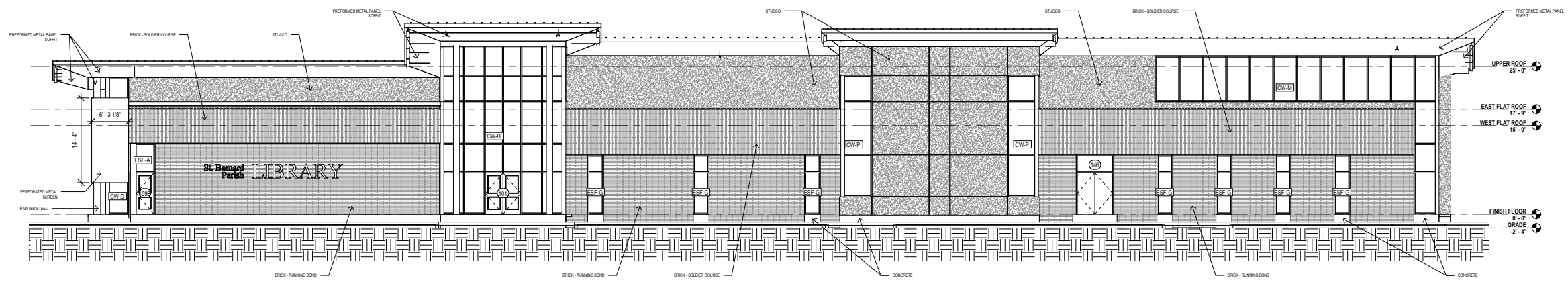
DESIGNED BY	Designer	CHECKED BY	Checker
DRAWN BY	Author	DATE	12.20.19

SHEET TITLE
FLOOR PLAN

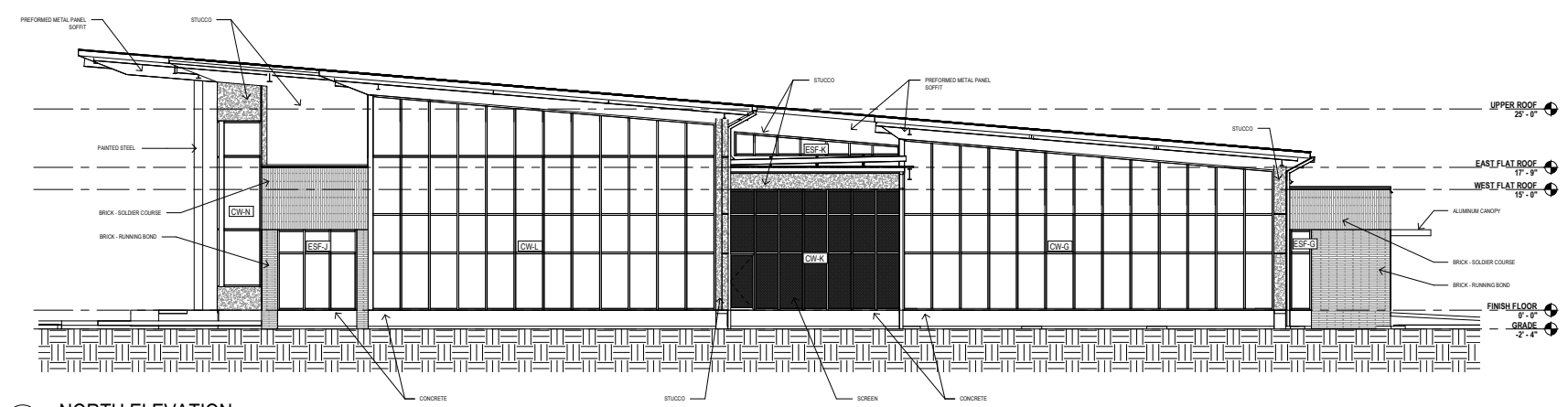
PROJECT NO.	MBA - 11884	SHEET NO.	A110
	ABM - 201803		



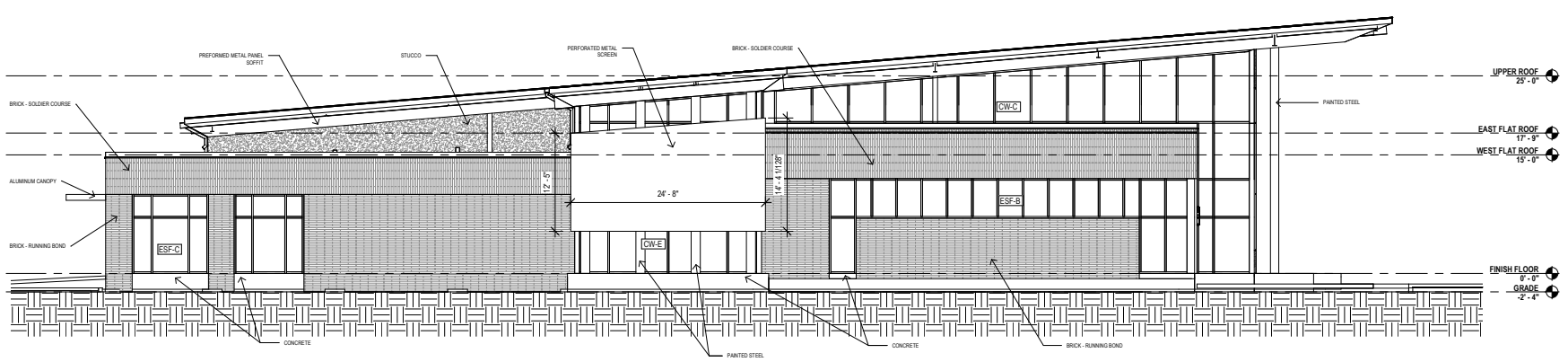
4 WEST ELEVATION
A320 1/8" = 1'-0"



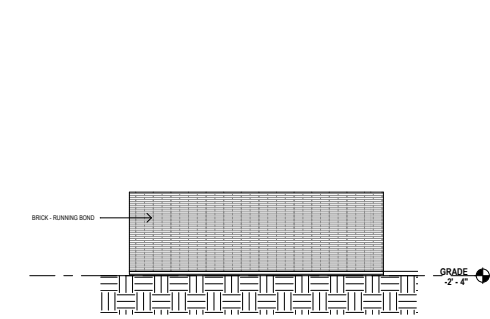
2 EAST ELEVATION
A320 1/8" = 1'-0"



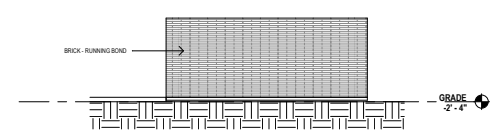
3 NORTH ELEVATION
A320 1/8" = 1'-0"



1 SOUTH ELEVATION
A320 1/8" = 1'-0"



6 CHILLER BLDG. - N ELEV
A320 1/8" = 1'-0"



5 CHILLER BLDG. - E ELEV
A320 1/8" = 1'-0"

No.	Description	Date

KEY PLAN

Mathes Brierre + **ABM**
ARCHITECTS ARCHITECTS BEAZLEY MOLIÈRE
A JOINT VENTURE
201 St. Charles Avenue, Forty First Floor
New Orleans, Louisiana 70170-4100
Voice: 504.586.9003 Fax: 504.582.1305
300 Heymann Blvd.
Lafayette, Louisiana 70503
337.233.0614

PROJECT TITLE

**ST. BERNARD
PARISH PUBLIC
LIBRARY**

ST. BERNARD PARISH

DESIGN DEVELOPMENT

DESIGNED BY	Designer	CHECKED BY	Checker
DRAWN BY	Author	DATE	12.20.19
SHEET TITLE	EXTERIOR ELEVATIONS		
PROJECT NO.	MBA - 11884	SHEET NO.	A320
	ABM - 201803		