



*St. Bernard Parish Library*

2600 Palmisano Blvd.

Chalmette, LA 70043

504-279-0448 504-279-5427 FAX

*Special Systems Meeting Monday, August 26, 2024  
EEC responses in Red*

Response to SPECIAL SYSTEMS SUBMITTALS

08/06/2024

The library staff has found many problems and irregularities with the submittals. They are organized below in the following order:

1. Sound System
2. Intrusion System
3. Paging System
4. Telecom
5. Video Surveillance
6. Access Control

Also included in this document are suggested submittals for the items that are missing or need to be replaced/upgraded.

**Missing from the special system submittals in section 16600 of the project manual was part 3.1 (Lightning protection system) and part 3.2 (Fire protection system).**

1 – SOUND SYSTEM SUBMITTALS

*Red EEC comments*

- 1) The Atlas 340-21B sound rack is too small to fit the specified devices .(The rack specified holds 12U, items specified use 15U). **This needs to be replaced with Atlas 340-28B** which holds 16U. **EEC WILL PROVIDE THE LARGER RACK AT NO EXTRA COST**
- 2) There is a power outlet and an ethernet jack in the ceiling for a projector. The plans need to indicate a flexible conduit tube between this projector and the metal sound rack. Inside this conduit will be two (2) HDMI video cables and a stereo RCA audio cable. Estimated cable length is 50 feet. See attached diagram showing placement. **WILL PROVIDE ETHERNET JACK POWER BY OTHERS**
- 3) The Listen Technologies **LT-100-216** amplifier was mentioned to be removed in the Library's October 2020 document. It is no longer available and it was a receiver on the **WRONG** frequency. **Please delete this item.** **SYSTEM WILL REQUIRE AN ADA SYSTEM IS THE LISTEN ONE IS PROVIDED NO NEED TO SWITCH. CAN PROVIDE THE 72 MHZ VERSION IF NEEDED**
- 4) The Listen Technologies **LA-122** antenna needs to be **ADDED** to the list. As mentioned in the October 2020 Library document, the sound rack is a metal cage that blocks FM radio frequencies transmitted, so an external antenna outside the box is needed. **WILL ADD ANTENNA**
- 5) Architect drawing ASK016 and project manual section 11130-1 specifies a motorized projection screen in the main meeting room for the video projector, which was not in the submittal. **Please add the motorized screen.** Preferred screen size is 88" x 140". **WILL PROVIDE MOTORIZED SCREEN**
- 6) The submittals neglected to add a video projector for the meeting room. I am suggesting an LG BU50RG Probeam 4K which should be bright enough at 5,000 lumens and will support 2 HDMI and wireless connections via WiFi, Bluetooth and Miracast. Retail price is about \$3,800. **DO YOU WANT ME TO PRICE THIS UP?**
- 7) The architect plans call for two (2) Ethernet jacks in the back of the main meeting room mounted 1 foot below ceiling level for PTZ cameras. The library plans to use these cameras to record and/or live stream the story time performances and library board meetings pursuant to Act 393, La R.S. 42:14(E) for remote access. **Please add two PTZ Optics Move SE 30X cameras and their mounts.** **DO YOU WANT ME TO PRICE THIS UP?**

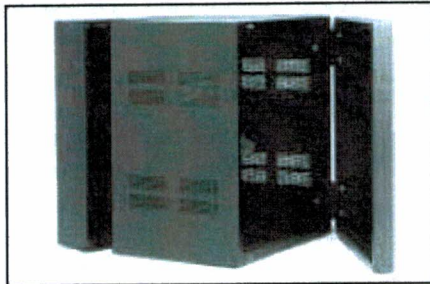
**Accounting of Sound Rack Cabinet**  
(per Project Manual section 16600)

1U	Tascam BD-MP1 DVD/Blu-ray player
1U	DBX 220I Equalizer/feedback eliminator
2U	Crown XTI-1002 amplifier
3U	Behringer RX 1202 FX mixer
1U	Furman M-9x2 power conditioner
3U	Heavy metal storage drawer
2U	Rack shelf
2U	Rack shelf
<b>15U</b>	<b>TOTAL RACK SPACE NEEDED (Min.)</b>

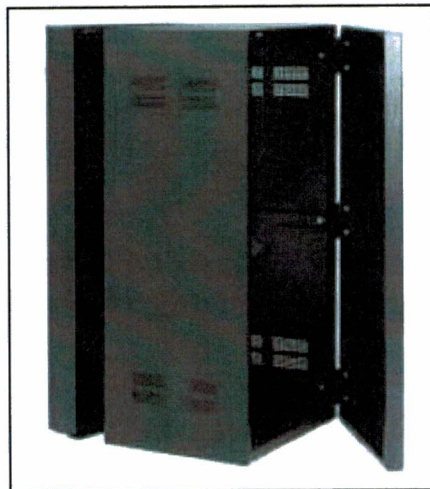


## SECTIONAL WALL CABINETS WITH 12", 15", AND 18" DEEP CENTER SECTION

**300B Series  
320B Series  
340B Series**



320-21B



340-42B

### FEATURES

- Sturdy Wall-Mount Cabinet Protects Equipment and Saves Valuable Floor Space
- Selection Includes Models with 12", 15", and 18" D Center Mounting Sections
- Reinforced Frame Flanges, Plus Corner-Brace Structural Supports and Electric-Welded Seams & Miters Provide Stability for Mounted Equipment
- Punched Vents Assure Heat Dissipation
- Wire Management Provisions Allow Organized Wire Access
- Adjustable Mounting Rails Provide Flexibility
- Choice of Standard Solid, Optional Plexiglass, or Optional Vented Door Styles Meet Application Needs

### APPLICATIONS

The 300B, 320B and 340B Series cabinets have been engineered to provide full functional and mechanical flexibility for wall-mounting standard 19" wide rack equipment. Sectional assemblies may be installed to accommodate right or left-hand hinging applications, and are ideal for use in areas with limited floor space or "protected" access requirements. Units are commonly used to house electronic switching, monitoring, sound and communication controls in school auditoriums, health care facilities, presentation/conference centers, manufacturing facilities, laboratories, public buildings, and recreational complexes. They can also be used to house computer control equipment, studio electronics, and building management/security systems in commercial, industrial, institutional, and military applications.

### GENERAL DESCRIPTION

Series 300B, 320B and 340B Series wall cabinets are distinguished by center-section depths of 12", 15", and 18", respectively. Basic model includes three, 16-gauge CRS sections which include a 2" deep, solid-steel front door, a 12", 15", or 18" D center section with adjustable mounting rails, and a 4 1/2" D rear door. Panel space openings range from 12 1/2" to 61 1/2". Enclosures are equipped with convenient and useful provisions for custom cabinet mounting, wire management, equipment mounting, and structural support. (See page 2 for detailed information.) Cabinet is finished in #962 black epoxy.

W/DOOR	W/O DOOR	PANEL OPENING*	RACK UNIT	CABINET O.D.		SECTION DEPTH**		OPTIONAL DOOR***	
				WIDTH	HEIGHT	REAR	CENTER	4" Deep	2" Deep †
<b>12" CTR. MODELS</b>									
300-12B	N/A	12 1/2"	7	20 1/2"	15 1/2"	4 1/2"	12"	—	302-12SD
300-17B	300-17LDB	17 1/2"	10		20 1/2"			304-17B	302-17(SD)(P)(V)
300-21B	300-21LDB	21 1/2"	12		24"			304-21B	302-21(SD)(P)(V)
300-28B	300-28LDB	28 1/2"	16		31"			304-28B	302-28(SD)(P)(V)
300-42B	300-42LDB	42 1/2"	24		45"			304-42B	302-42(SD)(P)(V)
300-61B	300-61LDB	61 1/2"	35		64 1/2"			304-61B	302-61(SD)(P)(V)
<b>15" CTR. MODELS</b>									
320-17B	320-17LDB	17 1/2"	10	20 1/2"	20 1/2"	4 1/2"	15"	304-17B	302-17(P)(V)
320-21B	320-21LDB	21 1/2"	12		24"			304-21B	302-21(P)(V)
320-28B	320-28LDB	28 1/2"	16		31"			304-28B	302-28(P)(V)
320-42B	320-42LDB	42 1/2"	24		45"			304-42B	302-42(P)(V)
320-61B	320-61LDB	61 1/2"	35		64 1/2"			304-61B	302-61(P)(V)
<b>18" CTR. MODELS</b>									
340-17B	340-17LDB	17 1/2"	10	20 1/2"	20 1/2"	4 1/2"	18"	304-17B	302-17(P)(V)
340-21B	340-21LDB	21 1/2"	12		24"			304-21B	302-21(P)(V)
340-28B	340-28LDB	28 1/2"	16		31"			304-28B	302-28(P)(V)
340-42B	340-42LDB	42 1/2"	24		45"			304-42B	302-42(P)(V)
340-61B	340-61LDB	61 1/2"	35		64 1/2"			304-61B	302-61(P)(V)

\* Listed panel opening allows 1/2" clearance at top and bottom (1" total).  
† Suffix model with P (plexiglass) or V (vented steel).

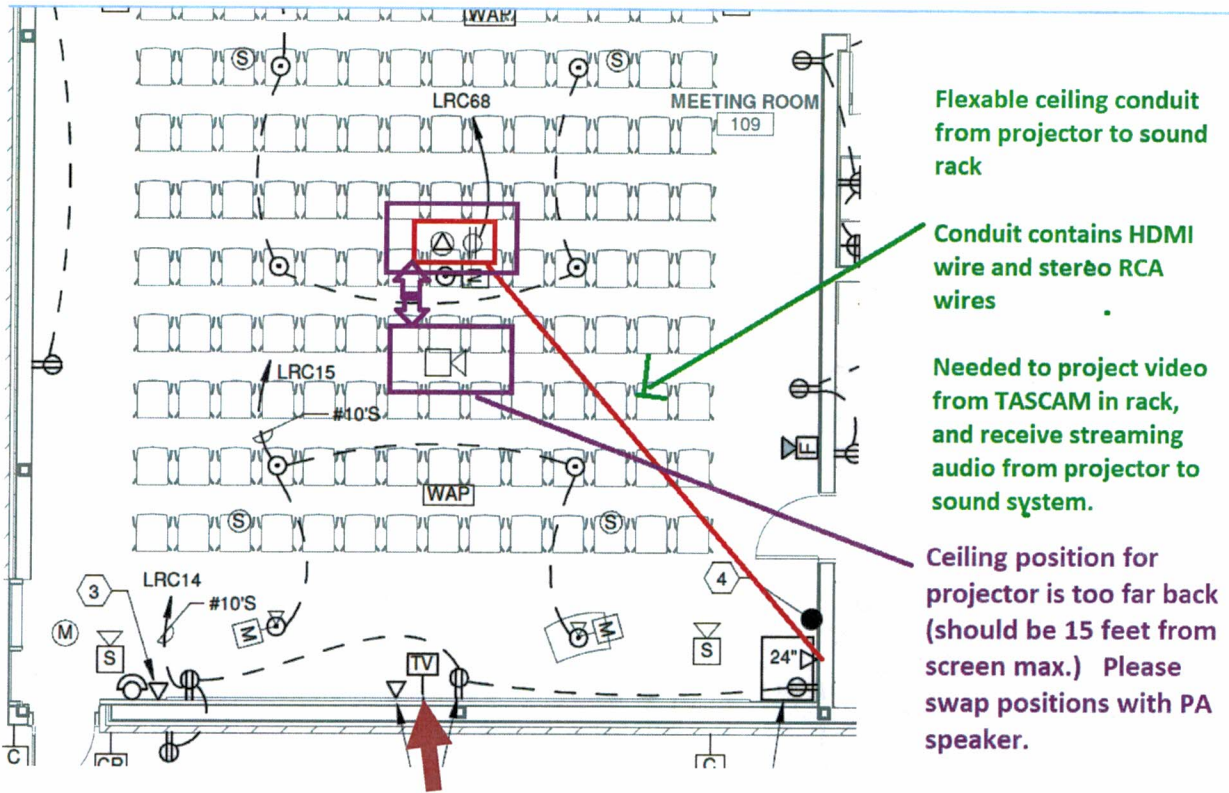
\*\* Non LDB Models include a 2" deep steel front door

\*\*\* Mounts LDB Series only.

*Specifications subject to change without notice*

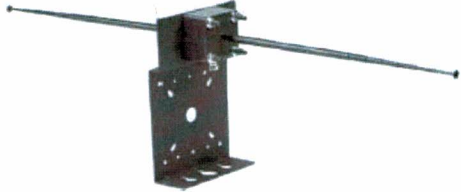


1601 JACK MCKAY BLVD. / ENNIS, TEXAS 75119 U.S.A. / TELEPHONE: (800) 676-3333 / FAX (800) 765-3435



Mount the Ethernet, TV and power outlets at the same standard floor height (18"), due to having a projector screen instead of a flat-screen TV at this location.

**LA-122  
Universal Antenna Kit (72 and 216 MHz)**



**Configuration:**

LA-122 Universal Antenna Kit (72 and 216 MHz)

**Product Overview:**

Complete with antennas for both 72 MHz and 216 MHz systems, the LA-122 Universal Antenna Kit gives you a single solution for your venue's remote antenna needs. Included mounting hardware allows the antennas to be attached to walls, mounted on electrical boxes, installed on a horizontal surface, or even inside a wall or ceiling. The LA-122 includes all the necessary components to configure several different versions of the antenna, and a 25-foot coaxial cable is also provided.

**Highlights:**

- Includes antennas for both 72 MHz and 216 MHz systems
- Range up to 305 m / 1,000 ft @72 MHz, 914 m / 3,000 ft @216 MHz.
- Mounting hardware allows for multiple installation options including walls, electrical boxes, and more
- Complete kit for configuring different versions of the antenna
- Comes with 25 feet of coaxial cable (RG-58)

**Includes:**

- Two (2) LA-102 Telescoping Top Mounted Antenna (216 MHz)
- Two (2) LA-106 Telescoping Top Mounted Antenna (72 MHz)
- Two (2) Flexible Antenna (72 MHz)
- Two (2) Flexible Antenna (216 MHz)
- One (1) Grounding Base
- One (1) Mounting Bracket
- One (1) Wall/Electrical Box Mounting Plate
- One (1) Shorting Plate
- One (1) Antenna Module
- One (1) 25 ft. (7.6 m) Coaxial Cable - RG-58 (terminated with BNC connectors on both ends)
- Two (2) Hex Kep Nuts
- Two (2) Fiber Washer
- Four (4) Machine Screw (#8-32x3/4")
- Four (4) Tapping Screw (#8-1/2")
- Four (4) Dry Anchors
- One (1) Owner's manual

Product Specification: Universal Antenna Kit (72 and 216 MHz)	
<b>Interconnections</b>	
Connector/s	BNC
<b>RF</b>	
Frequency Range	72 MHz - 72.025 MHz - 75.975 MHz 216 MHz - 216.0125 MHz - 216.9875 MHz
Number of Channels	72 MHz - 57 (17 wide band, 40 narrow band) 216 MHz - 57 (19 wide band, 38 narrow band)
Antenna Type	Monopole and Dipole
Unity Gain	0 dB
Typical Range	Range up to 305 m / 1,000 ft @72 MHz, 914 m / 3,000 ft @216 MHz.



### Monoprice 4K High Speed HDMI Cable - 4K@60Hz, 18Gbps, HDR, CL2 In-Wall Rated, Active, 50ft, Black

Product # 12962  
UPC # 889028009802

★★★★☆ 440 Reviews | 108 Questions, 123 Answers

**\$59.99**

4 interest-free payments of \$15 with **affirm**. See if you qualify  
\*Affirm is not available for business or international orders

Length: 50ft 25ft 30ft 35ft 40ft 45ft **50ft** 60ft 75ft 100ft

Qty: - 1 +

ADD TO CART

SAVE FOR LATER

In Stock



#### Volume Pricing

Qty: 1	Qty: 2-9	Qty: 10-19	Qty: 20-49	Qty: 50+
\$59.99	\$58.99	\$57.99	\$56.99	\$55.99



### Monoprice 50ft Premium 2 RCA Plug/2 RCA Plug M/M 22AWG Cable - Black

Product # 2868  
UPC # 844660028680

★★★★☆ 1316 Reviews | 45 Questions, 77 Answers

**\$24.49**

Buy with **affirm** on orders over \$50. See if you qualify  
\*Affirm is not available for business or international orders

Length: 50ft 1.5ft 3ft 6ft 10ft 12ft 15ft 25ft 35ft **50ft** 75ft

Color: Black ●

Qty: - 1 +

ADD TO CART

SAVE FOR LATER

In Stock



#### Volume Pricing

Qty: 1	Qty: 2-9	Qty: 10-19	Qty: 20-49	Qty: 50+
\$24.49	\$23.27	\$22.04	\$20.82	\$19.59

Products Based on Your Search

<p>Corrugated Loom Tubing: 1/2 in Nominal Size, 100 ft Overall Lg, Polyethylene, Black</p> <p><input type="checkbox"/> Compare</p> <p>Web Price <sup>i</sup></p> <p><b>\$104.23</b> / each</p> <p>Qty: <input type="text" value="1"/> <b>Add to Cart</b></p>	<p>Corrugated Loom Tubing: 1/2 in Nominal Size, 150 ft Overall Lg, Polyethylene, Black</p> <p><input type="checkbox"/> Compare</p> <p>Web Price <sup>i</sup></p> <p><b>\$117.74</b> / each</p> <p>Qty: <input type="text" value="1"/> <b>Add to Cart</b></p>	<p>Corrugated Loom Tubing: 1/4 in Nominal Size, 250 ft Overall Lg, Polyethylene, Black</p> <p><input type="checkbox"/> Compare</p> <p>Web Price <sup>i</sup></p> <p><b>\$138.40</b> / each</p> <p>Qty: <input type="text" value="1"/> <b>Add to Cart</b></p>
--	--	--

Related Categories

- Split Corrugated Loom Tubing
- Corrugated Loom Tubing
- Wire & Cable Management

Product Categories / Electrical / Wire & Cable Management / Corrugated Loom Tubing / Split Corrugated Loom Tubing / Corrugated Loom Tubing: 2 in Nominal... [Email](#) [Print](#)

**Corrugated Loom Tubing: 2 in Nominal Size, 100 ft Overall Lg, Polyethylene, Black**



Item 25D263 Mfr. Model 200PEBSX000XBS

Web Price <sup>i</sup>

**\$130.29** / each

This item requires special shipping, additional charges may apply.

Qty:  **Add to Cart**

Ship  Pickup

Expected to arrive Thu. Aug 08.

Ship to 70112 | [Change](#)

Shipping Weight 16.1 lbs

Save money on this similar product!



Corrugated Loom Tubing: 1/2 in Nominal Size, 100 ft Overall Lg, Polyethylene, Black

[Compare Products](#)

Web Price <sup>i</sup>

**\$104.23** / each

Qty:  **Add to Cart**



**(800) 222-4700**  
Talk to an expert!

Contact Us <sup>v</sup>  
We're here to help

Account <sup>v</sup>



Shop By Category <sup>v</sup>

What's New

Deals <sup>v</sup>

Used Gear <sup>v</sup>

Rentals

Articles & Videos

Giveaway

Sweetwater Card

**BACK-TO-SCHOOL SPECIAL FINANCING\***

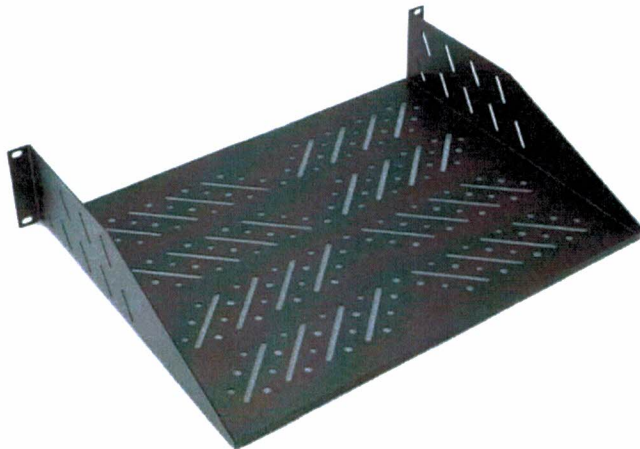
[Learn More](#)

Live Sound & Lighting / Portable Racks & Cases / Rack Accessories / Rack Shelves / On-Stage

**NEW On-Stage Vented Rack Shelf - 2U**

2U Vented Rack Shelf with 35-lb Weight Limit

[Write your review](#) | Item ID: RVS2000



**\$43.95**

<sup>S</sup> Best price

**36** Special Financing - Ends Aug 26, 2024  
\$1.25/month with 36 month financing\* [See all payment options](#)

FREE Shipping

FREE Sweetwater Support

FREE 2-year Warranty

**Hot New Item - On The Way!**

We have already ordered this new item from On-Stage. Order now, risk-free, and we'll ship it when it arrives! Estimated August 2024

[Notify me when in stock](#)

**Pre-order Now**

[Add to Wish List](#)



**ASK AN EXPERT**

Our expertly trained Sales C...

**CALL-IN CLEARANCE**

Unlock special savings on thousands of products

Ends August 26

Shop Now

Live Sound & Lighting / Portable Racks & Cases / Rack Accessories / Rack Drawers / On-Stage

# On-Stage RDL3000 3U Locking Rack Drawer

3U Locking Rack Drawer

★★★★★ [1 review](#) | [Write your review](#) | Item ID: RDL3000



**\$121.95**

Best price

**36** Special Financing - Ends Aug 26, 2024  
\$3.46/month with 36 month financing\* [See all payment options](#)

OR

**\$7** Earn **\$7.00 back in Bonus Bucks**† on this purchase when you use your Sweetwater Credit Card without financing. Select your offer in checkout. [Terms](#)

4 interest-free payments or as low as \$12/mo with **affirm**. [Check your purchasing power](#)

FREE Shipping

FREE Sweetwater Support

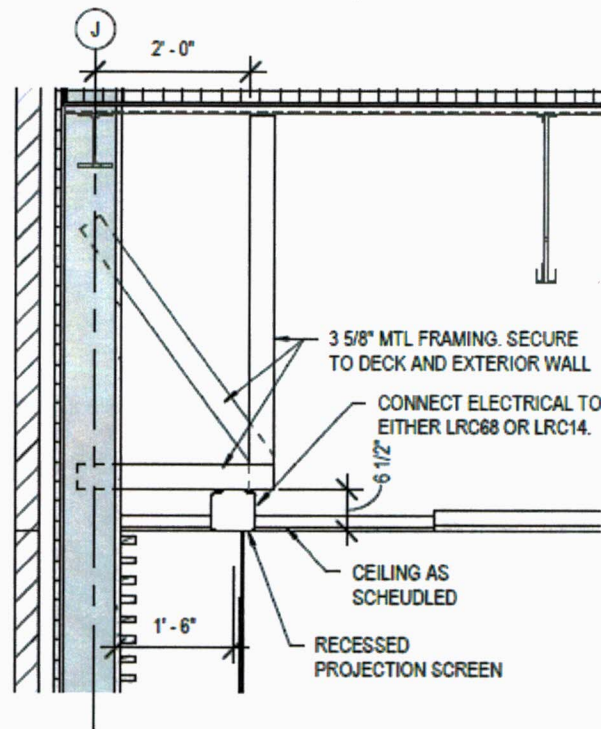
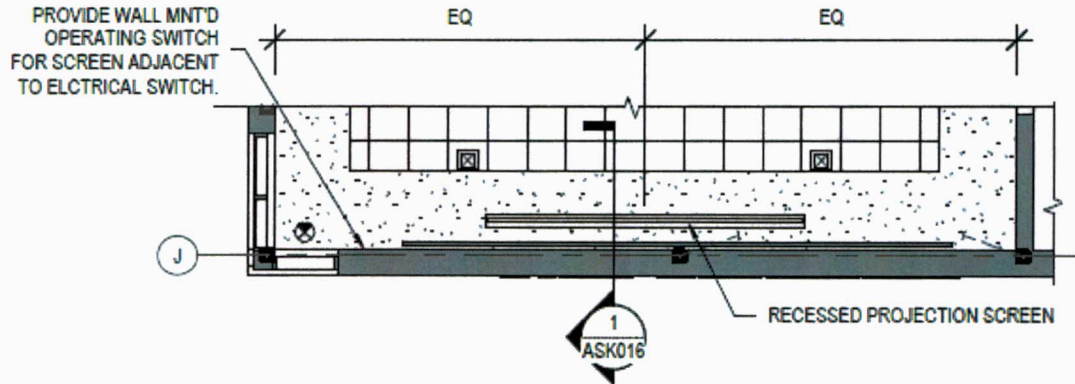
FREE 2-year Warranty

✓ In Stock!

**Only 7 left in stock! More on the way.**

Add to Cart





1 ASK016 PROJECTION SCREEN FRAMING DETAIL 1/2" = 1'-0"



- PROJECTORS
- PROJECTION SCREENS
- OUTDOOR THEATER PACKAGES
- PROJECTOR LAMPS
- AUDIO EQUIPMENT
- LIVE STREAMING EQUIPMENT
- DISPLAYS DIGITAL SIGNAGE
- ACCESSORIES
- LIGHTING AND EFFECTS
- AV DESIGN & INSTALLATIONS
- AUDIO VIDEO RENTALS

Home / Electric Projector Screens / Non-Tensioned Ceiling Recessed Electric Screen - Hard Wired / Draper Access E Recessed Electric Projection Screen

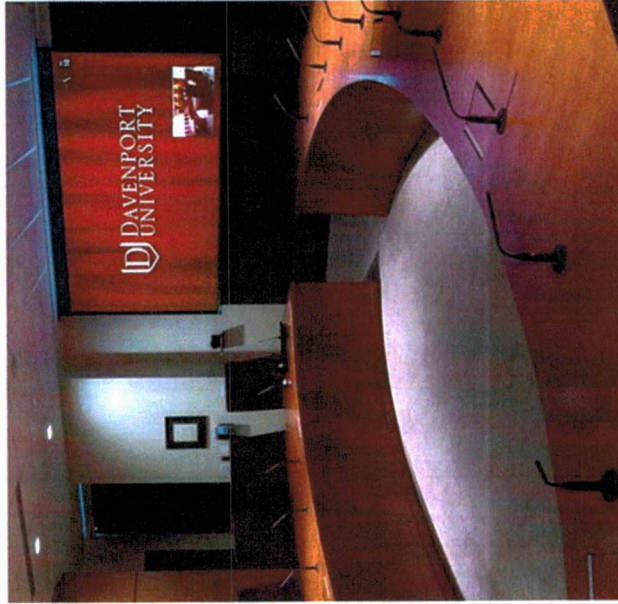


PHOTO: DON KRISAK FOR ORBITAL ELECTRONICS

# DRAPER ACCESS E RECESSED ELECTRIC PROJECTION SCREEN

[Write a Review](#)

**OUR PRICE: \$3,106.00**

Availability: Usually ships in 5-7 business days

- Select Format & Size: Format 16:10 - Size 87 1/2 x 140 (+\$230)
- Motor Options: Standard Motor
- Control Options: 110v Wall Switch
- Select Fabric: Front Projection - Matt White XT1000E

- 1 +

**ADD TO CART**

Bookmark

Share This



BU50RG

## LG ProBeam 4K (3840x2160) Laser Projector with 5,000 ANSI Lumens Brightness

### Key Features

- 4K UHD / 8.3 Mega pixels (3840x2160) Laser
- 40" ~ 300" Flexible screen size
- 5,000 ANSI Lumens

[Show More](#)

ADD TO COMPARE



### PROJECTION SYSTEM

Native Resolution	4K UHD (3840 × 2160) <sup>3)</sup>	Brightness (ANSI Lumen / Lumen) 1)	5000
Contrast Ratio (Full On Full Off)	3,000,000:1 T	Noise (typical) - Energy Saving Min. (Bright)	29 dB(A)
Noise (typical) - Energy Saving Med.	27 dB(A)	Noise (typical) - Energy Saving Off (Max)	26 dB(A)
Uniformity(JBMM 9point)	85%	Changeable F#	Yes
Projection Lens - Focus (Auto / Manual)	Manual	Projection Lens - Zoom	1.6x
Projection Image - Screen Size	40" ~ 300"	Projection Image - Standard (lens to wall)	Wide 2880 /Tele 4630 (100")
Projection Image - Throw Ratio	1.30 - 2.08	Lens Shift	Yes ( Horiz ± 20% / Vert ± 50% )
Projection Offset	100%	Light source - Type	Laser (LD + P/W)
Light source - Life High Brightness	20,000 Hrs		

## MAIN FEATURES

Platform (OS, UI)	Signage webOS 6.0	Screen Share (Wireless Mirroring with MiraCast supporting device)	Yes
Contents Sharing (with DLNA supporting device)	Yes	Bluetooth Sound out	Yes
LG Sound Sync(with Sound Bar)	Yes	Plug & Play(RGB/DVI/HDMI Auto Source Detection)	Yes
USB Host (Movie, Photo)	Yes	Setting Guide	Yes (Bean Bird)
HID (Keyboard/Mouse/GamePad Connection Thru USB)	Yes	Eco Function - Energy Saving Mode	Yes (Min/Mid/Max)
Eco Function - Auto Off / Auto Sleep	Yes	Eco Function - Time Power On/Off (On Time / Off Time)	Yes (On / Off)
Eco Function - Automatic Standby / Auto Power Off	Yes		

## GENERAL SPECIFICATION

Aspect Ratio	Full / Original 16.6 / 16.9 / 16.10 / 21.9 / 4:3	Sound - Output	10W (5W+5W)
Sound - Clear Voice	Yes (Clear Voice III)	Net Size (mm) (W x D x H)	370 x 290 x 155.7 370 x 290 x 143.7 (Without Leg)
Net Weight (kg or g)	9.7Kg	Gross size (mm) (W x D x H)	580 x 441 x 273
Gross Weight (kg or g)	11.5KG	Power Consumption (Max.)	400W
Stand-by Power	0.5W1	Power Supply	100V - 240V @ 50-60 Hz (PSU Built-in)
Operation Temperature	0 - 40°C	Input Signal Compatibility - Digital(HDMI)	Up to 4K (4096x2160) (60Hz, 50Hz, 24Hz)

## INPUT/OUTPUT TERMINALS

Audio out	Yes (Phone jack)	RS-232C(in)	1
RS-232C(out)	1	IP control	Yes
RJ45	1	HDMI(in)	2
USB Type-A	2 (USB2.0)		

## DESIGN

Cabinet Color	Top/Bottom - White Front/Rear - Black	Local Key	Joystick
Kensington Lock	Yes	Leg-Stand	Yes (4 Leg)
Ceiling mount hole (for bracket)	Yes		

## ACCESSORY

Manual (Full or Simple Book)	Simple Book, Full Book	Quick User Guide (Quick Set-up Guide)	Yes
Warranty Card	Yes	Cable - RS232C cable(D-sub to phone)	1
Cable - Power cord	1	Remote control (Battery included) - Normal	0
Conformances(Regulation)	FCC/ETL/CE/CB/CCC/PSE/BIS		

## ADDED FEATURES

HDR	Yes	DICOM	Yes
TruMotion	Yes	Digital Keystone Correction	Warping (4/9/15/25/HV)
HDCP	HDCP2.2	Quick(Instant) Power on/off	Yes (on 12 Sec off 2 Sec)
Built-in Memory (for Storage)	Yes (about 9G)	Background Image	Yes
Blank	Yes	Image Flip	Yes (Horizontal/Vertical)
PIP	Yes	PBP	Yes
Crestron RoomView™	Yes	24/7 Operation	Yes
One Quick Share	Yes	Black Level Control	Yes
Color Temperature Adjustment	Yes	Expert controlvADJ	Yes
Brilliant Color™ (Overlap Duty)	Yes	Gamma Correction	Yes
Noise Reduction	Yes	HDMI ARC(Audio Return Channel)	Yes
HDMI simplink(CEC)	Yes		



# Premier Mounts Polaris Universal Projector Mount MAG-PRO - mounting kit - for projector - black

MFG # MAG-PRO CDW # 1093857 UNSPSC 45111600

~~\$184.00~~ Save \$77.01

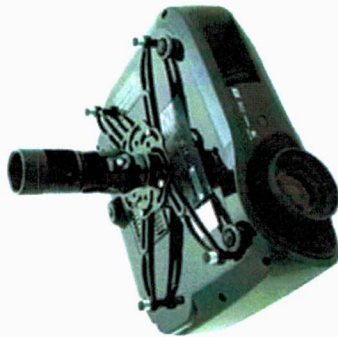
**\$106.99**

**S** Best price

Advertised Price

Reviews ★★★★★ (33)

**1** **Availability: 187 units In Stock**  
Orders placed today ship the next business day by a CDW partner.



**Add to Cart**

**Buy Now**



Studio & Recording / Video Equipment / Video Cameras / PTZOptics / Move

## PTZOptics Move SE 30X Optical Zoom PTZ Camera - Grey



PTZ Camera with Automatic Tracking, 16X Digital Zoom, 1080p 60 fps Resolution, White Balance Modes and 2D/3D Noise Reduction

[Write your review](#) | Item ID: PT30XSEGYG3



**\$1,199.00**

Best price

Or pay \$199.83 for 6 months with Easy Pay [See all payment options](#)

Starting at \$75/mo with [affirm](#). [Check your purchasing power](#)

FREE Shipping

FREE Sweetwater Support

FREE 2-year Warranty

In Stock!

Add to Cart

Add to Wish List

Color: Grey



## 2 - INTRUSION SYSTEM SUBMITTALS

- 1) There is no explanation of how the alarm will be sounded or used as a silent alarm.  
Choices available are:  
Alarm bell/buzzer on site. / Phone dial up alarm (Cell network or landline) / Internet / Combination of these **CELLULAR NETWORK LTEM-PV**

-- If Internet monitoring/alarm is used, the 7845iGSM model or equivalent was not specified in the parts list

- 2) The alarm system is located in electrical closet 137, not the data room.  
There is no analog phone jack or ethernet jack specified in this room.  
Is there a reason why this room was chosen instead of the data room?
- 3) There is no phone or internet jack listed in room 137. The library currently uses VOIP for voice calls instead of an analog phone line. If the phone option is chosen, a cell phone service will need to be used. (Again, probably using the 7845iGSM module).
- 4) The Honeywell 6160 keypad listed is the same keypad we currently use at the high school. After two or so years, the keys have become "mushy" and are hard to press and sometimes requires us to press the key multiple times to get it to "register".

Is there a better keypad we can get with possibly more durable metal keys?

The only other possible keypad that I see that is compatible is Honeywell 6460.

Can we at least get something like this 6460 for the staff area and possible the cheaper 6160 for the front lobby? **DO YOU WANT ME TO PRICE THIS UP?**

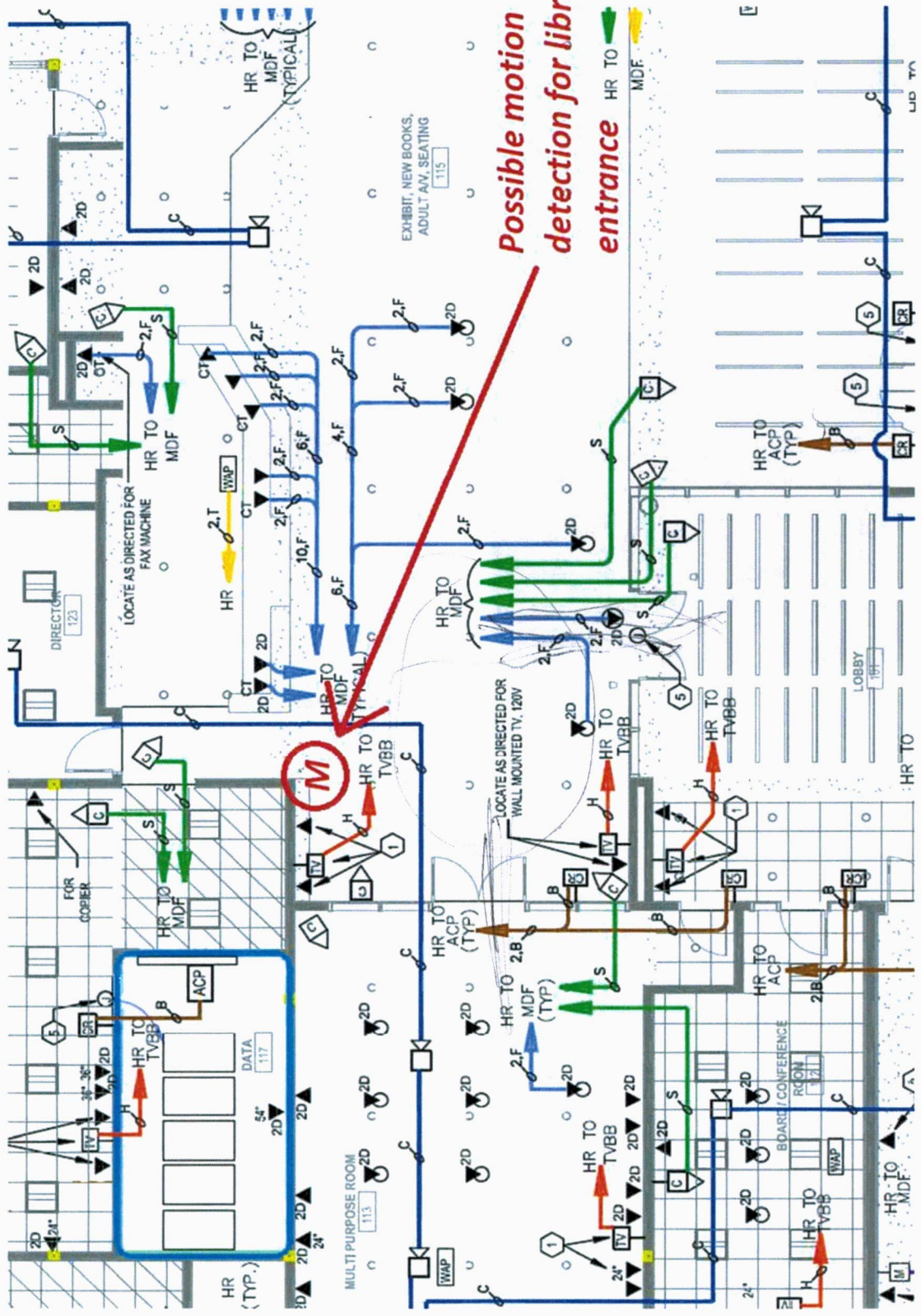
- 5) Motion detectors are shown next to all external doors, which is fine. However, if the lobby is used after hours, the library needs a way to protect for a possible break-in entrance from either the inside entrance doors from the lobby or the multi-purpose room. **DO YOU WANT ME TO PRICE THIS UP?**

I have attached a drawing showing a suggested location for a motion detector to compensate for this and should monitor both doors.

Also as an aside, we will need to program the system to have two (2) security zones/partitions: **WILL DO ZONES AND PARTITIONS**

- 1) Front lobby and meeting areas
- 2) Rest of the library





**Possible motion  
 detection for library  
 entrance**

HR TO  
 MDF



ALL CATEGORIES

All Categories

Search product...

Search

Home / Shop / Wired Security Products / Wired Alarm Keypads / Honeywell Home 6460S Premium Custom Alpha Keypad



## Honeywell Home 6460S Premium Custom Alpha Keypad

**\$214.99**

Premium Custom Alpha Keypad for VISTA Systems

1

ADD TO CART

**PayPal** Pay in 4 interest-free payments of \$57.51. [Learn more](#)

Add to wishlist

SKU: 6460S

CATEGORY: Wired Alarm Keypads

SHARE THIS PRODUCT

### 3 – PAGING SYSTEM SUBMITTALS

1. The 70v speaker wiring is one zone with one big "daisy chain" connecting all of them. This one-zone solution is not recommended. Separate zones are need for the "library open area", "after-hours meeting rooms", "staff area", and "quiet study areas".

**Please split the one-zone system into five zones.** See attached diagram.

DO YOU WANT ME TO PRICE THIS UP TO SEPERATE THE ZONES?

2. The 70v amplifier specified is not feasible for the following reasons:

a) It needs to support at least 5 zones and currently only supports one.

b) It needs to support a paging microphone on the circulation desk with zone selection, along with future support for a telephone interface.

c) The amplifier does not have enough power to run all the speakers. While the documentation does not specify if you plan on using the 3.5 Watt or 5 Watt transformer taps, the louder 5 watt tab is preferable for large open areas.

(30 speakers x 5 watts each + 20% headroom = 180 watts)

THE RAULAND SPEAKERS SPECED WILL ONLY NEED TO BE TAPPED BETWEEN A 1/2 WATT & 2 WATTS MA

**Recommended amplifier would be a Quest PR-240BT.**

DO YOU WANT ME TO PRICE THIS UP?

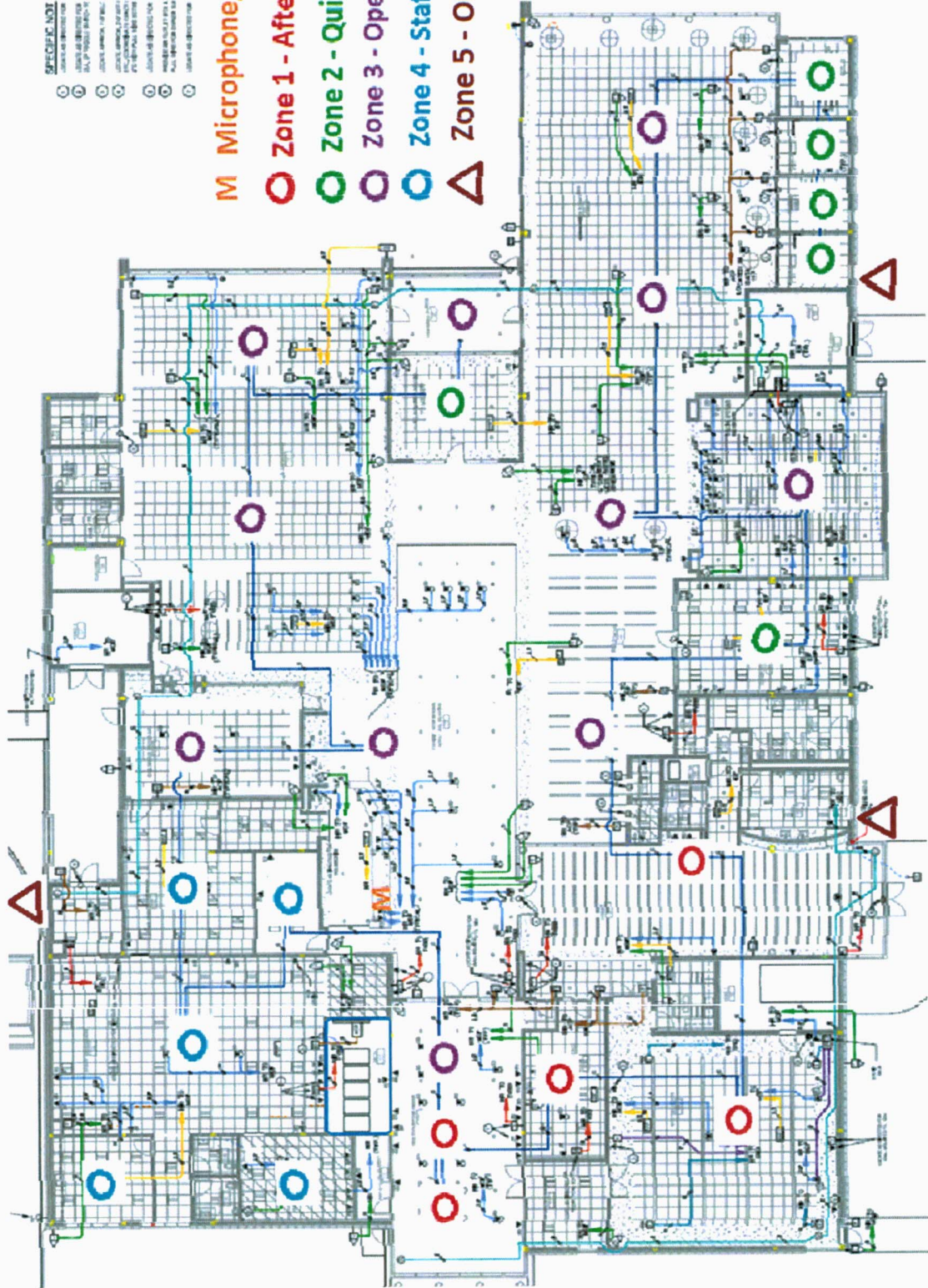
3. There is no microphone listed in the submittals. Without a microphone or a telephone interface, the system would be useless. **Please add a Quest RM-06 microphone to the submittal, matching the amplifier suggested.**

DO YOU WANT ME TO PRICE THIS UP?

4. Outside paging was overlooked. Please add 3 weatherproof horn speakers to the plan. DO YOU WANT ME TO PRICE THIS UP?

**SPECIFIC NOTE**  
 1. ALL MICROPHONE ZONES SHALL BE INSTALLED IN ACCORDANCE WITH THE FOLLOWING NOTES:  
 2. ALL MICROPHONE ZONES SHALL BE INSTALLED IN ACCORDANCE WITH THE FOLLOWING NOTES:  
 3. ALL MICROPHONE ZONES SHALL BE INSTALLED IN ACCORDANCE WITH THE FOLLOWING NOTES:  
 4. ALL MICROPHONE ZONES SHALL BE INSTALLED IN ACCORDANCE WITH THE FOLLOWING NOTES:  
 5. ALL MICROPHONE ZONES SHALL BE INSTALLED IN ACCORDANCE WITH THE FOLLOWING NOTES:  
 6. ALL MICROPHONE ZONES SHALL BE INSTALLED IN ACCORDANCE WITH THE FOLLOWING NOTES:

- M** Microphone
- Zone 1 - After Hours (5)
- Zone 2 - Quiet rooms (6)
- Zone 3 - Open Areas (11)
- Zone 4 - Staff Areas (5)
- △** Zone 5 - Outdoor (3)





Commercial audio solutions for every application

# PR-130BT / PR-240BT

## Commercial Mixer-Amplifier

All-in-one mixer-amplifiers for use in all types of commercial applications; restaurants, schools, courtrooms, health clubs, retail stores, coffee shops, medical/dental offices, warehouses and more.



Designed for the most common commercial installation requirements



Ideal for background music, mic, and paging with the ability to connect six external sources



Industry standard connectors to make installs fast and efficient

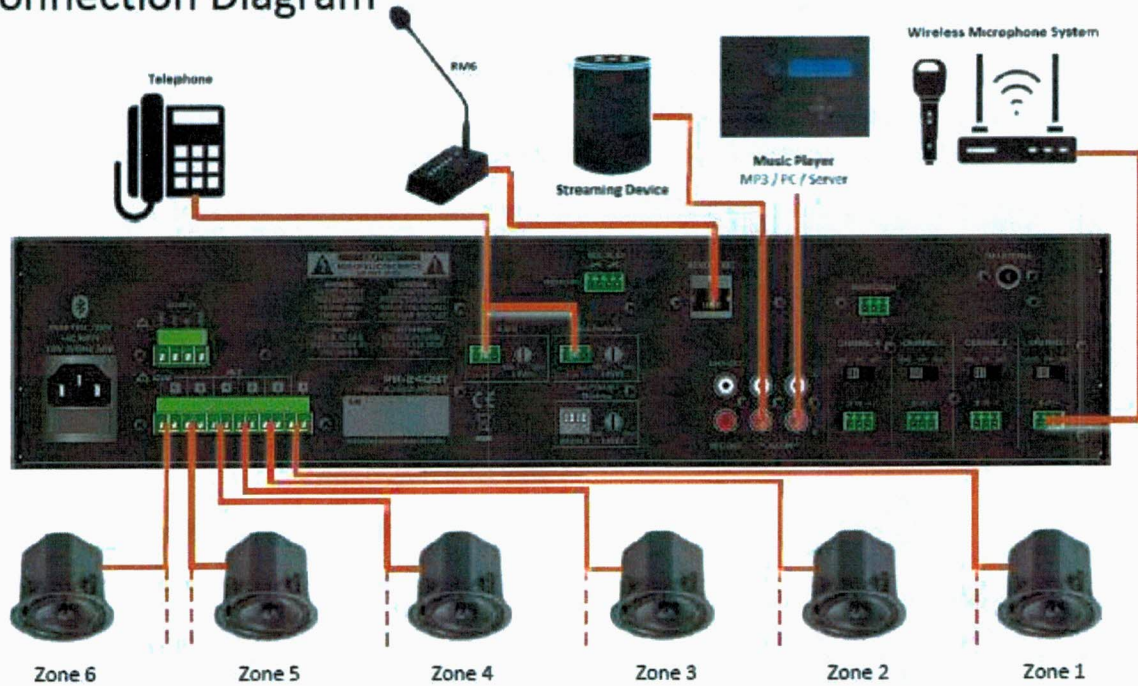


Front panel controls to easily manage source and master volumes with bass & treble control

### KEY SPECIFICATIONS

- 70V/100V/4Ω, 130 or 240 Watts
- 2U Rack-mountable (rack ears included)
- CH 1-4 Balanced Mic/Line inputs on Phoenix Terminals with selectable Phantom Power
- 2 AUX Inputs on RCA connectors.
- (1) TELE-PAGING input, and (1) MOH/LINE OUT on 3-prongs Phoenix terminals with level controls.
- 6-zones with individual level control.
- Built-in media player with Bluetooth, USB/SD MP3 player, FM & Recording
- Optional RM6 - 6-zones paging microphone station
- Power, Signal, -20dB, Clip and Protect Indicators
- Output Current Limiting, Thermal Protection & DC Offset protection

## Connection Diagram



## Specifications

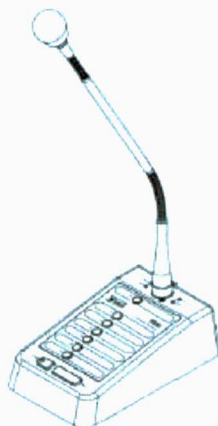
	PR-130BT	PR-240BT
Total Rated Power Output	130W	240W
Speaker Output	4Ω/70V/100V	
Input Connectors	CH1-4 : Mic/Line on balanced 3-Conductor Phoenix Connector with Phantom Power AUX : 2 Line input on stereo RCA	
Speaker Output Connectors	6 Zone outputs for Hi-z (70/100V) only, or single output for 4Ω/70V/100V	
Frequency Response	80Hz - 18kHz (±3dB)	
Tone Control 100Hz - 10kHz	±12dB ±3dB	
S/N Ratio	< 90 dB	
T.H.D (1 kHz)	< 0.5 %	
Crosstalk at all control maximum	-70dB at 1kHz	
Phantom Power	+48 VDC	
Protection	Over current / Over temperature / Under voltage / DC fault	
Power Supply	120V AC, 50-60Hz	
Carton Dimensions	20.7" x 16.5" x 7.6" (525 x 420 x 193mm)	
Weight (Net)	22.05 lbs. (10 kg)	24.25 lbs. (11 kg)
UPC Code	694970007086	694970007109



Commercial audio solutions for every application

## RM6 6-Zone Gooseneck Paging Microphone

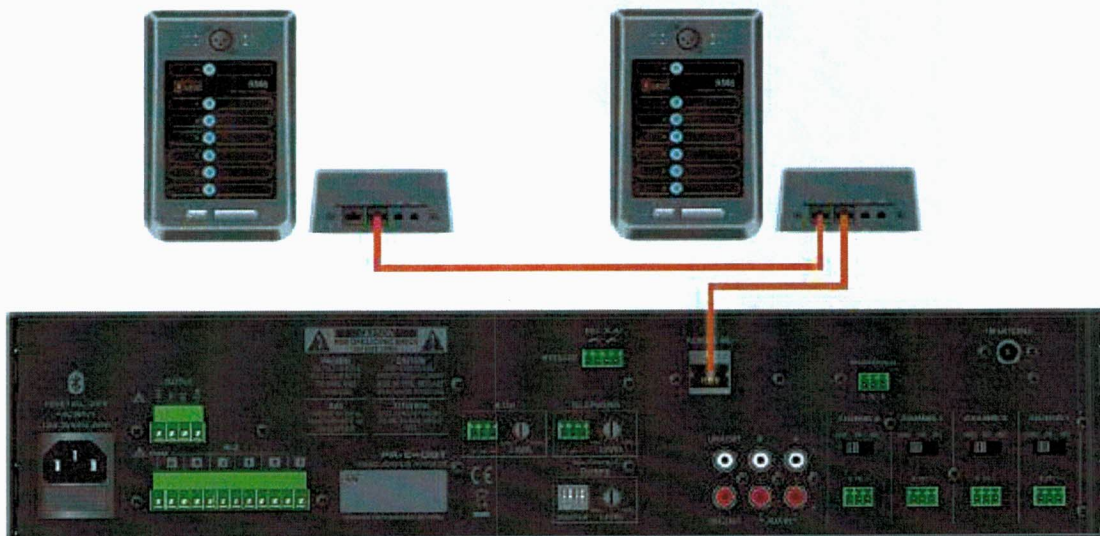
Optional 6-Zones paging microphone with built-in chime for use with PR-130A/BT and PR-240A/BT.



### KEY SPECIFICATIONS

- Indicators: Power (Blue), Signal (Green), Clip (Red), Busy (Red)
- XLR microphone input for the included gooseneck microphone
- Individual Zone Selection and ALL zone buttons
- Built-in chime
- Input and output RJ45 jacks for connecting to the PR-Series mixer-amplifier and daisy-linking multiple microphones.
- Up to 4 RM6 microphone station can be interconnected via the link ports

## Connection Diagram



## Spécifications

Audio Output	0dB (Balanced)
Audio Input	-36 dB ±3 dB (Balanced)
Frequency Response	80Hz~15kHz (-1 dB)
S/N Ratio	Better than 90dB
Total Harmonic Distortion (T.H.D.)	Less than 0.5%
Serial Interface	RS485 Max 200m (UTP CAT5/6)
Operating Temperature	0° ~ +40°C
Weight (Net)	1.10 lbs. (0.5 kg)
Carton Dimensions (Width/Height/Depth)	7.9(W) x 2.4(H) x 4.7(D) inches 200(W) x 60(H) x 120(D) mm
UPC Code	694970007215





HOME > SPECO SPC10T 6.5" 70/25V WEATHERPROOF PA HORN SPEAKER WITH TRANSFORMER

DO YOSENTU WANT ME TO PRICE THIS UP TO SEPERATE THE ZONES?

### Speco SPC10T 6.5" 70/25V Weatherproof PA Horn Speaker with Transformer

SKU SPC10T ★★★★★ | 1 Review | Add Your Review



Model No SPC10T

\$46.54

Qty: - 1 +

ADD TO CART

[Add to Quote](#)

Buy now with **PayPal**

4 interest-free payments of \$11.63 with **Klarna**. [Learn More](#)

\$9.49 Flat Rate Shipping

Free Lifetime Tech

**Availability:** Usually ships the next business day

#### Product Highlights

- Weather-resistant, aluminum construction
- Includes mounting bracket
- Rubber bell protector
- Selectable 70/25V transformer dial

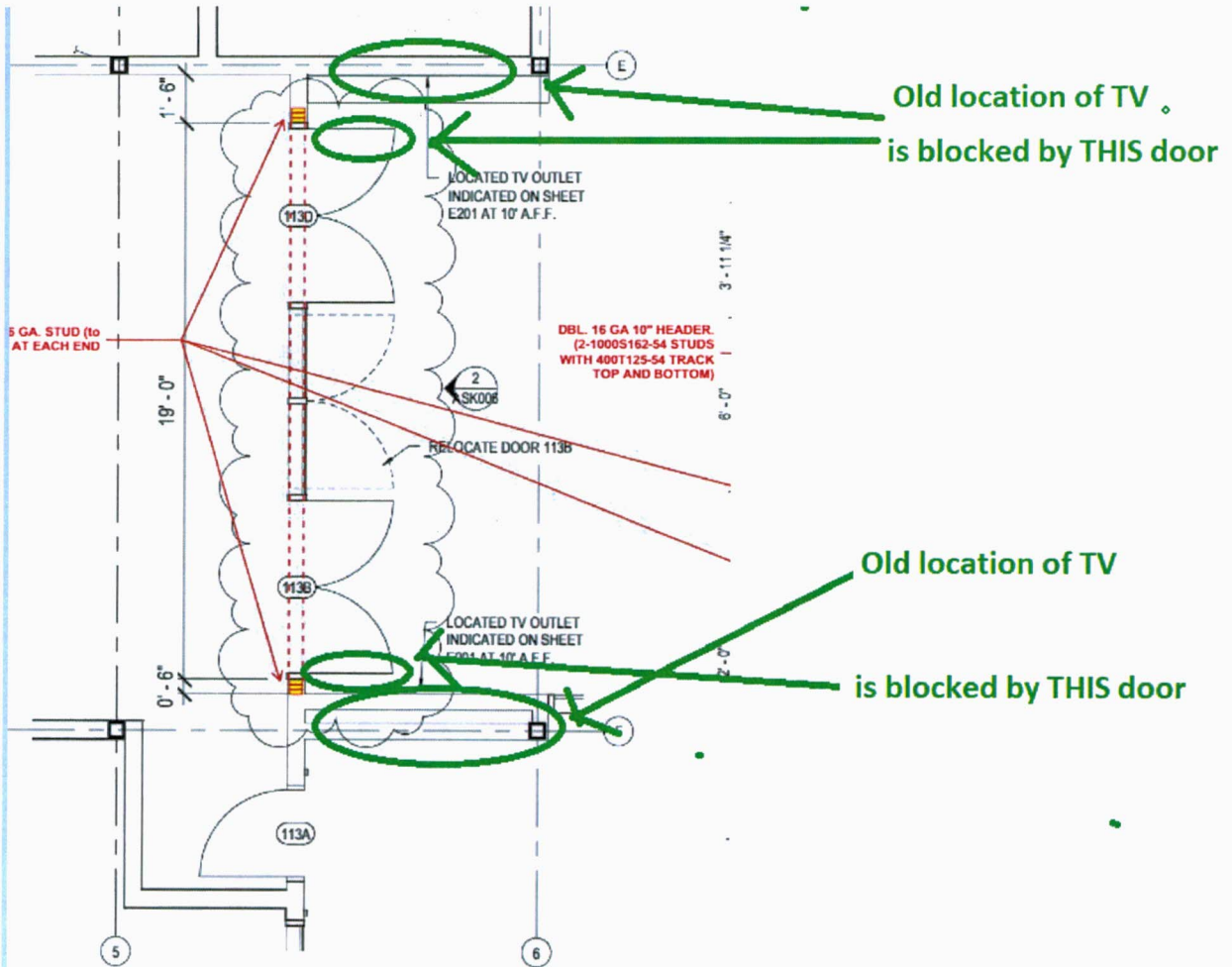
SPC10T

#### 4 – TELECOM SUBMITTALS

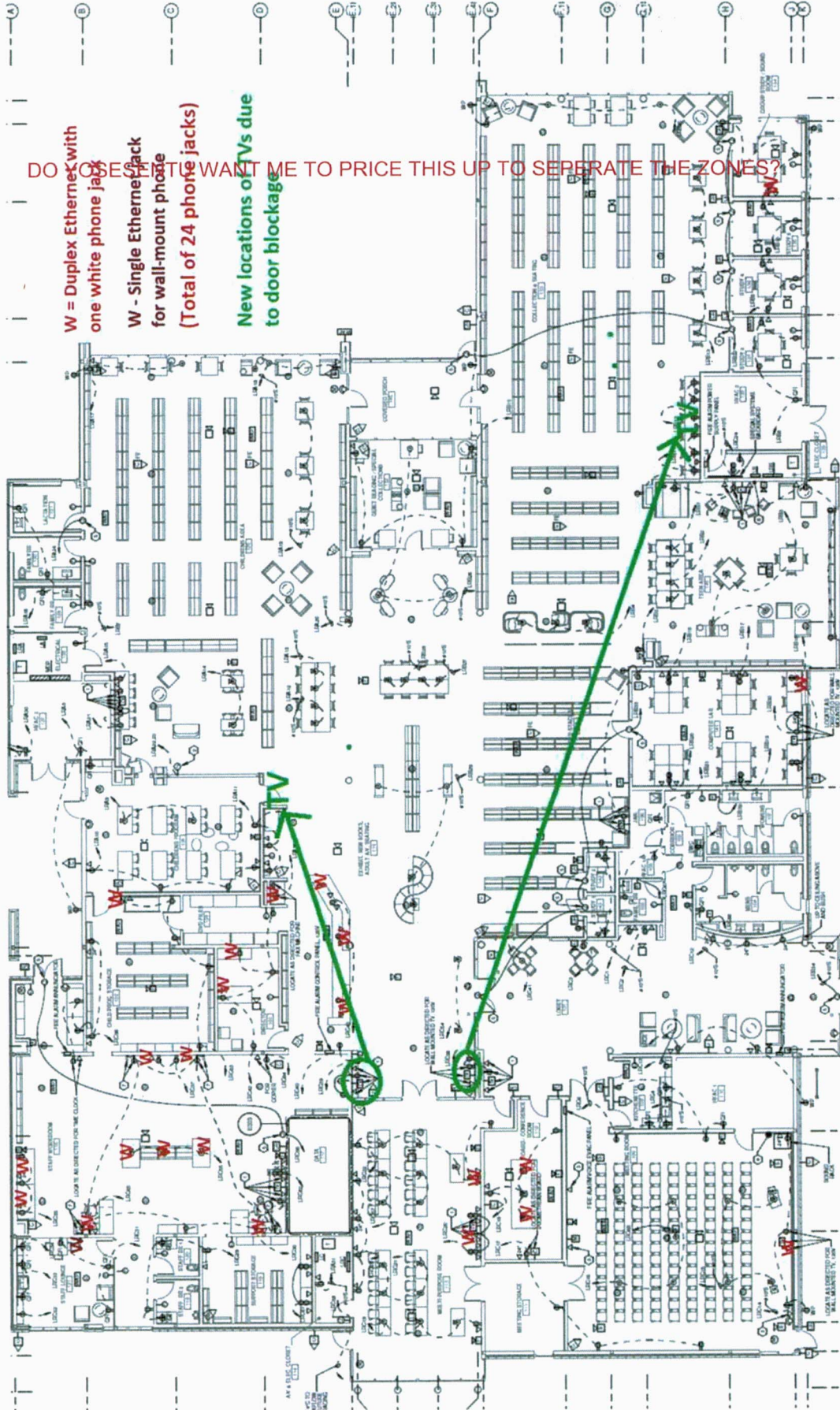
- 1) The systems drawings show an IDF in electrical closet 139 to the MDF in Data Room 117 connected via BOTH a 12-strand single mode and 12-strand multi-mode fiber. However, the **submittals DO NOT show the interface modules** needed, **nor the rack** needed to support them (in electrical closet).

The library staff would prefer to have all the wires terminate in the data room for simplicity and in case of power failure in room 139. If the IDF-MDF system is required due to conduit space limitations, please remember that MOST of the coax wires in the electrical closet will need to have PoE+ enabled to power the WiFi and other devices. **COAX WIRE NOT NEEDED**

- 2) The CATV system "head end" (TVBB) is located in the electrical closet in room 139 instead of its logical place in the data room.117. There are several reasons that the data room is a better choice: **OKAY**
  - a) There are three RJ6 antenna/satellite cables in the southwest corner of the building terminate in the data room and their signals will need to be mixed and broadcast through the TVBB. **OKAY**
  - b) The data room will most likely be the place where COX cable will run and terminate BOTH their fiber and coax wires into, since it is the central locus for internet access and the coax analog line converter for the FAX.
  - c) TVs used for signage might use a HDMI modulator from a rack-mounted PC in the data room to show the notifications. This PC is in the data room.  
**PLEASE MOVE THE TVBB into the data room. OKAY**
- 3) There are two TVs that have changed location in the modified plan. This is due to the new double doors in front of Multi-Purpose room 113, which would block the view of the TVs and possibly cause a collision if opened too far. **Please make sure the new Ethernet, power, and coax wires are at the new TV locations.** **OKAY**
- 4) Ubiquiti WiFi Access Point transmitters are specified inside the building, but the submittal did not mention the external ones. We will need **four (4) U7 Outdoor AP** devices along with metal mounting straps for this installation.  
**DO YOU WANT ME TO PRICE THIS UP?**
- 5) The specifications call for WHITE Ethernet wires for telephones, however the wiring diagram does NOT show where they are located. To avoid confusion, please see the attached **map of phone jack locations.**  
**ON BID PRINTS**
- 6) The plans call for floor power and Ethernet jacks, but the submittal **does NOT show any floor receptacle covers.** To avoid a trip hazard by the public, these should be flat brass plates mounted flush with the floor, NOT tombstone-like devices. **PROVIDED BY OTHERS**



1 FLOOR PLAN - ISF-C REVISION  
 ASK006 1/4" = 1'-0"



**W = Duplex Ethernet with one white phone jack**  
**W - Single Ethernet Jack for wall-mount phone (Total of 24 phone jacks)**

**New locations of TVs due to door blockage**

DO YOU WANT ME TO PRICE THIS UP TO SEPARATE THE ZONES?



<b>Max. TX power</b>	
2.4 GHz	23 dBm
5 GHz	26 dBm
6 GHz	-
<b>MIMO</b>	
2.4 GHz	2 x 2
5 GHz	2 x 2
6 GHz	-
<b>Throughput rate</b>	
2.4 GHz	688 Mbps
5 GHz	4324 Mbps
6 GHz	-
<b>Antenna gain</b>	
2.4 GHz	Directional internal: 8 dBi / External omni: 3 dBi
5 GHz	Directional internal: 12.5 dBi / External omni: 4 dBi
6 GHz	-
<b>Antenna beamwidth</b>	
2.4 GHz	90°
5 GHz	45°
6 GHz	-
<b>Antennas</b>	(1) Directional internal antenna (2) External omni antennas (2) RP-SMA connectors for external antenna
<b>LEDs</b>	(1) Power: white/blue (4) Mesh signal: blue
<b>Button</b>	Factory reset
<b>Mounting</b>	Wall, ceiling, pole (included)
<b>Ambient operating temperature</b>	-30 to 60° C (-22 to 140° F)
<b>Ambient operating humidity</b>	5 to 95% noncondensing
<b>Certifications</b>	CE, FCC, IC

## Software

<b>WiFi standards</b>	802.11a/b/g/n/ac/ax/be
<b>Wireless security</b>	WPA-PSK, WPA-Enterprise, WPA/WPA2/WPA3/PSK
<b>RSSID</b>	8 per radio
<b>VLAN</b>	802.1Q
<b>Advanced QoS</b>	Fair-user rate limiting
<b>Guest traffic isolation</b>	Supported
<b>Concurrent clients</b>	200+

## Supported Data Rates

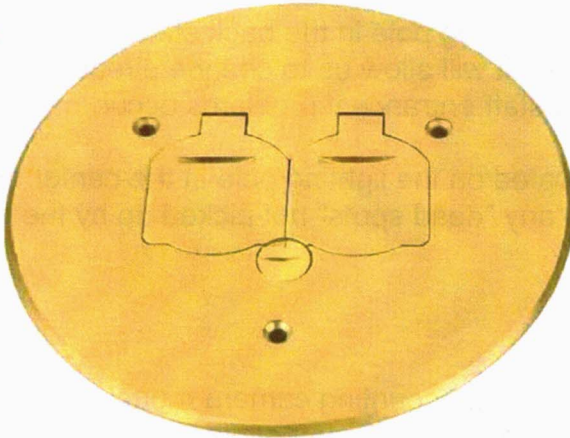
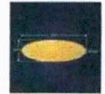
<b>802.11a</b>	6, 9, 12, 18, 24, 36, 48, 54 Mbps
<b>802.11b</b>	1, 2, 5.5, 11 Mbps
<b>802.11g</b>	6, 9, 12, 18, 24, 36, 48, 54 Mbps
<b>802.11n</b>	6.5 Mbps to 300 Mbps (MISO - MIMO, HT 20/40)
<b>802.11ac (WiFi 5)</b>	6.5 Mbps to 1.7 Gbps (MISO - MIMO NSS1/2, VHT 20/40/80/160)
<b>802.11ax (WiFi 6)</b>	7.3 Mbps to 2.4 Gbps (MISO - MIMO NSS1/2, HE 20/40/80/160)
<b>802.11be (WiFi 7)</b>	7.3 Mbps to 4.3 Gbps (MISO - MIMO NSS1/2, EHT 20/40/80/160/240)



NEWHOUSE ELECTRIC

### Low-Profile Round Floor Box Outlet Cover with 15A TR Duplex Receptacle and 2 Lift Lids, Brass

★★★★☆ (14) Questions & Answers (2)



\$68.96

Pay \$43.96 after \$25 OFF your total qualifying purchase upon opening a new card. [Apply for a Home Depot Consumer Card](#)

- TR duplex receptacle and individual lift lids
- Tough, corrosion-resistant, solid brass cover
- Fit non-metallic floor box bases for concrete-pour foundations
- [View More Details](#)

#### Chalmette Store

✓ 7 in stock Aisle 07, Bay 019

Pickup at Chalmette

Delivering to 70043

#### Pickup

Today  
7 in stock  
**FREE**

#### Delivery

Friday, Aug 9  
37 available  
**FREE**

**Get it as soon as today.** Schedule your delivery in checkout.

Feedback Live Chat

## 5 – VIDEO SURVEILLANCE SUBMITTALS

1) Please replace two of the outdoor cameras with **VIVOTEK SD-9384-ELH** or equivalent outdoor PTZ dome cameras. **DO YOU WANT ME TO PRICE THIS UP?**

- One of them should be mounted on the lighting pole in the back staff parking lot, since it is the only security camera for this lot and it will allow us to change directions to focus on the chiller/dumpster area and also the staff entrance if problems occur.

- The second PTZ camera should be located on the lighting pole in the center of the front parking lot and will allow us to view any "dead spots" not picked up by the other cameras.

See attached diagram.

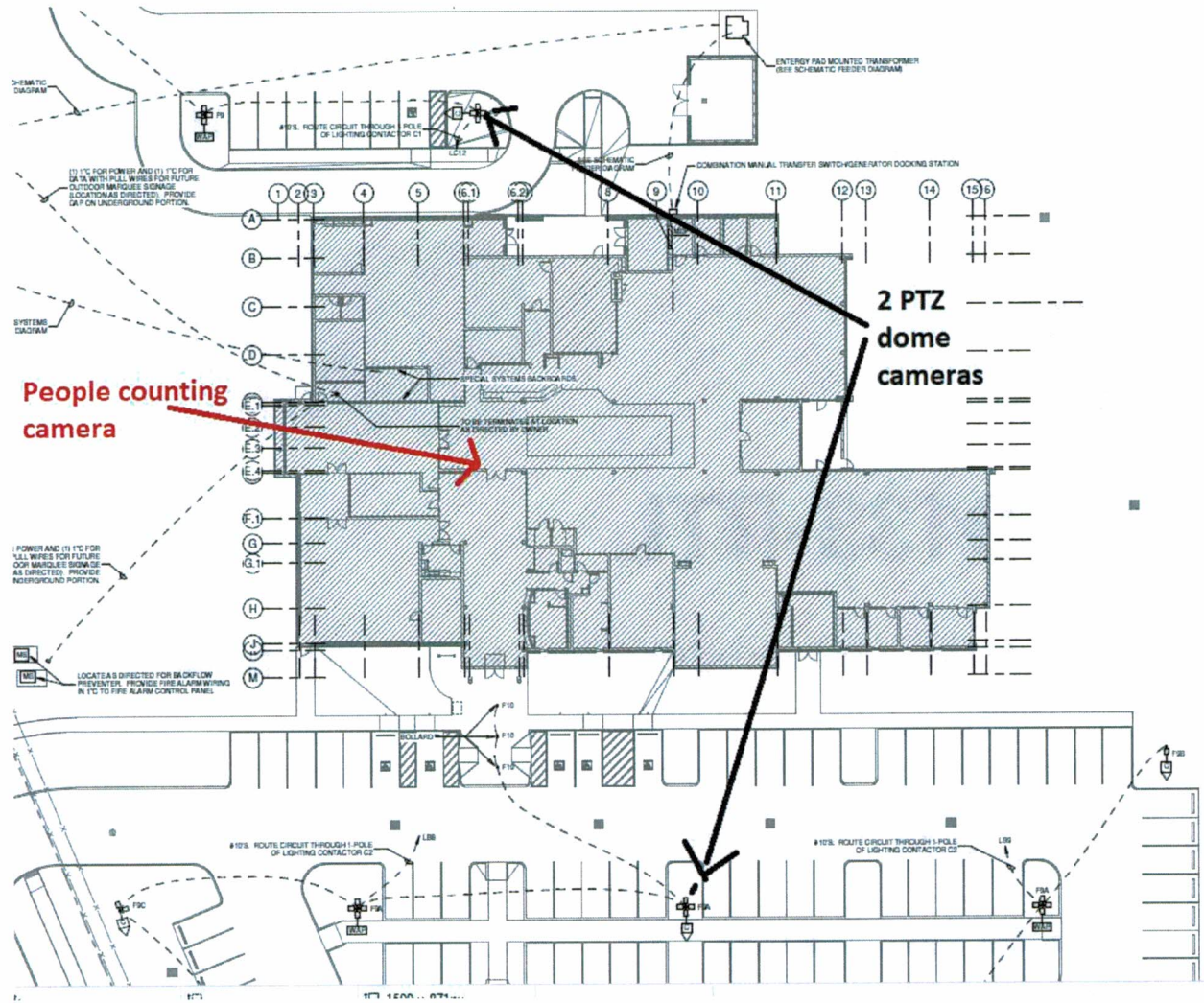
2) Please add a **VIVOTEK SC9133-RTL** people counting camera mounted in the ceiling just inside the library entrance from the foyer, if compatible with the NVR. The plans already have an Ethernet jack mounted in the ceiling in the architect's drawings for this purpose, but it was not marked as a camera. Our current Geovision security camera system has a camera already doing this job, and we do not wish to run 2 camera security systems at the new library. **DO YOU WANT ME TO PRICE THIS UP?**

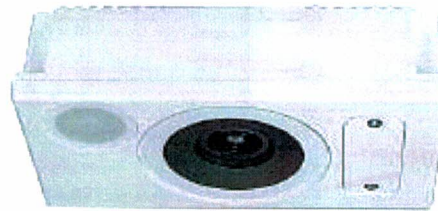
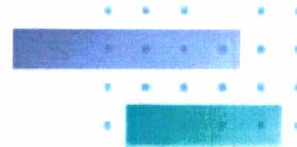
3) The hard disk drives model is listed on the front sheet as **WD40PURZ**, while the spec sheet indicates the item as **WD43PURZ**. There is no indication of how many drives will be purchased. Two (2) drives would be the bare minimum and would be VERY insufficient for the amount of cameras being used.. I would suggest purchasing and filling all 8 drive bays. **WILL PROVIDE (3) DRIVES**

4) The submittal calls for a HP 64V81A6ABA 19" monitor, but the purpose of this is unclear. No video cable is listed in the submittal. If it to be used for install work, there is no mouse or keyboard specified either. If this is to be used as a day-to-day monitoring tool for the library staff at the circulation desk, there needs to be two HDMI to Ethernet conversion adapters included in the submittal.

**PROVIDED AND CONNECTED TO NVR**







# SC9133-RTL

AI People Counting Camera for Flexible Mounting Height and Scenarios

AI People Counting • High Accuracy • Outstanding Detection Area • Mounting Height 1.9 ~ 10m

## Technical Specifications

### System Information

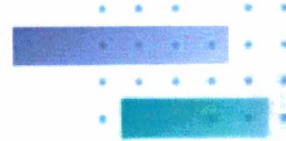
Model	SC9133-RTL
CPU	Multimedia SoC (System-on-Chip)
Flash	8 GB
RAM	2 GB

### Camera Features

Image Sensor	1/2.8" Progressive CMOS
Lens Type	Fixed Focal
Focal Length	f = 1.47mm
Aperture	F2.7
Field of View	140° (Horizontal) 140° (Vertical) 140° (Diagonal)
Shutter Time	1/60 sec. to 1/32,000 sec.
WDR Technology	WDR Enhanced
Storage	MicroSD/SDHC/SDXC card slot
Built-in Installation Aids	Micro USB*, Pixel Calculator *Requires Micro B converter to connect Wi-Fi dongle

### Video

Video Compression	H.265, H.264, MJPEG
Maximum Frame Rate	1792 x 1792 @ 30 fps 896 x 896 @ 30 fps 448 x 448 @ 30 fps
Maximum Streams	3 simultaneous streams
Report Format	JSON/XML/CSV



## Audio

Audio Capability	One-way audio
Audio Compression	G.711, G.728
Audio Interface	Built-in microphone

## Network

Users	Users Live viewing for up to 10 clients
Protocols	IPv4, IPv6, TCP/IP, HTTP, HTTPS, UPnP, RTSP/RTP/RTCP, IGMP, SMTP, FTP, DHCP, NTP, DNS, DDNS, PPPoE, CoS, QoS, SNMP, 802.1X, UDP, ICMP, ARP, SSL, TLS
Interface	10Base-T/100 BaseTX Ethernet

## General

Connectors	RJ45 (through a M12 to RJ45 cable) M12 A-code 12-pin for DC power / 2x RS485 / 2x DI (max. 60V per port) / 1x DO Memory card slot x1
LED Indicator	System power and status indicator
Power Input	PoE IEEE 802.3af Class 3 DC 9-48V
Power Consumption	PoE: Max. 12.5W DC: Max. 13.3W
Dimensions	140 (D) x 76 (W) x 42 (H) mm
Weight	492 g
Casing	Metal, IP66, IK10
Certifications	CE, LVD, FCC Class B, VCCI, C-Tick, UL, BIS, BSMI, UK CE
Operating Temperature	PoE/DC: Starting temperature: -30°C - 60°C (-22°F - 140°F) Working temperature: -30°C - 60°C (-22°F - 140°F)
White LED	Yes
IR LED	Yes
Storage Temperature	-40°C - 75°C (-40°F - 167°F)

## Installation

Installation Height	1.9 - 10 m
---------------------	------------

## Included Accessories

Packing Contents	Quick installation guide, flat mounting bracket with ears, screw pack, M12 to RJ45 cable
Optional Accessories	AM-10G (SC9133-RTL), Recessed Kit for SC9133-RTL AM-11H, Pendant mount kit

# VIVOTEK



# SD9384-EHL

Speed Dome Network Camera



5MP • H.265 • 30x Optical Zoom • WDR Pro • Smart Stream III • SNV

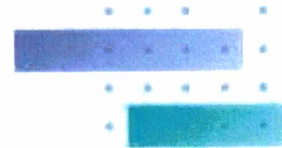
## Technical Specifications

### System Information

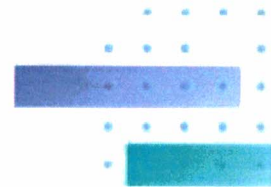
Model	SD9384-EHL
CPU	Multimedia SoC (System-on-Chip)
Flash	8 GB
RAM	2 GB

### Camera Features

Image Sensor	1/2.8" Progressive CMOS
Max. Resolution	2560x1920 (5MP)
Lens Type	30x Optical Zoom, Auto Focus
Focal Length	f = 4.94 ~ 148.24 mm
Aperture	F1.3 ~ F4.6
Iris Type	DC-iris
Field of View	54.1° ~ 1.9° (Horizontal) 41.2° ~ 1.4° (Vertical) 65.7° ~ 2.4° (Diagonal)
Shutter Time	1 sec. to 1/100,000 sec.
WDR Technology	WDR Pro
Day/Night	Yes
Removable IR-cut Filter	Yes
IR Illuminators	Built-in IR Illuminators up to 200 meters with Smart IR, IR LED*8
Minimum Illumination	0.03 lux @ F1.3 (Color) 0.005 lux @ F1.3 (B/W) 0 lux with IR illumination on
Pan Speed	Preset speed: 450°/s
Pan Range	360° endless
Tilt Speed	Preset speed: 450°/s



Tilt Range	-20° to 90° (auto flip)
Preset Locations	256 preset locations 128 presets per tour
Pan/Tilt/Zoom Functionalities	32x digital zoom (4x on IE plug-in, 8x built in) Auto Pan mode Auto Patrol mode Mechanical Auto flip
Storage	Seamless Recording to MicroSD/SDHC/SDXC card and recording to network-attached storage (NAS)
Built-in Installation Aids	Remote focus, remote zoom
<b>Video</b>	
Video Compression	H.265, H.264, MJPEG
Maximum Frame Rate	30 fps @ 2560x1920 30 fps @ 2560x1440 60 fps @ 1920x1080
Maximum Streams	3 video streams (Up to 8 configurable profiles)
S/N Ratio	74 dB
Dynamic Range	120 dB
Video Streaming	Adjustable resolution, quality and constant bitrate control, Smart Stream III
Image Settings	General settings: video title and time stamp overlay, video orientation (flip, mirror), day/night settings; Illuminators: illuminators, anti-overexposure; Image settings: white balance, image adjustment (brightness, contrast, saturation, sharpness, gamma curve), defog, HLM, 3DNR, EIS, scene mode (auto, deblur); Exposure: BLC, HLC, exposure control (exposure level, iris adjustment, exposure time, gain control, iris mode), AE speed adjustment, WDR; Focus: Privacy mask; Scheduled profile settings; Pixel calculator
<b>Audio</b>	
Audio Capability	Two-way audio (Full duplex)
Audio Compression	G.711, G.726
Audio Interface	External line input External line output
<b>Network</b>	
Users	Live viewing for up to 10 clients
Security	Access list, digest authentication, HTTPS, IEEE 802.1x, password protection, Secure boot, Signed firmware, Trend Micro IoT Security (brute force attack event, cyberattack event, quarantine event), User access log, User account management
Protocols	802.1X, ARP, Bonjour, CIFS/SMB, DDNS, DHCP, DNS, FTP/SFTP, HTTP, HTTPS, ICMP, IGMPv3, IPV4, IPV6, NTP, NTP, PPPoE, QoS (CoS/DSCP), RTSP/RTMP/RTCP, SMTP, SNMP, SSL, TCP/IP, TLS 1.2, UDP, UPnP
Interface	Capable of connecting 10 Base-T/100 Base-TX/1000 Base-TX(RJ-45) Ethernet cable *It is highly recommended to use standard CAT5e & CAT6 cables which are compliant with the 3P/ETL standard.
ONVIF	Profile G, S, T supported, specification available at <a href="http://www.onvif.org">www.onvif.org</a>
<b>AI Analytics</b>	
Compute Capability	SoC with built-in hardware deep learning accelerator
Vision Object Analytics	Object Detector: People, Vehicle (4-wheeled, 2-wheeled); Attribute Extraction: People (gender, clothing color, bag, hat), Vehicle (bike, bus, car, motorcycle, truck, color); Re-Search Extractor; Path Extraction
Application	Deep Learning VCA (Smart Tracking Advanced) Smart Tracking Advanced (Intrusion detection, Loitering detection, Line crossing detection, Face detection, Unattended object detection, Missing object detection)
Application available with license	Parking Violation Detection, Restricted Zone Detection Support for more analytic applications and free trial, please visit <a href="http://vivotek.com/video-analytics">vivotek.com/video-analytics</a>
<b>Solution Integration</b>	
Video Motion Detection	Motion Detection (Five-window video motion detection)
VADP Package	Stratocast, Trend Micro IoT Security (3-year free trial)
<b>Alarm and Event</b>	
Event Trigger	Audio detection, camera tampering detection, cybersecurity events (brute force attack event, cyberattack event, quarantine event), digital input, manual trigger, motion detection, periodical trigger, recording notification, SD card life expectancy, smart tracking advanced trigger, system boot, preset reached



**Event Action** Event notification via audio clip, camera link, digital output, email, HTTP, FTP, NAS server, SD card  
File upload via email, HTTP, FTP, NAS server, SD card; trigger track, trigger patrol, move to preset

### General

**Connectors** RJ-45 cable connector for 10/100 Mbps PoE network connection  
Audio line input  
Audio line output  
DC 48V power input  
AC 24V power input  
Digital input\*2  
Digital output\*1  
RS-485\*1

**LED Indicator** System power and status indicator

**Power Input** AC 24V, DC 48V, IEEE 802.3 bt Class 6 PoE  
(Simultaneous Power Redundancy Supported)

**Power Consumption** PoE:  
Max. 51W/26W (IR on/off)  
DC 48V:  
Max. 51W/26W (IR on/off)  
AC 24V:  
Max. 51W/26W (IR on/off)

**Dimensions** 256 x 336 mm

**Weight** 7.1 kg

**Certifications** EMC: CE (EN 55032 Class A, EN55035, EN50121-4), UKCA (BS EN 55032: 2015 +A11: 2020, BS EN 55035: 2017), FCC (FCC Part 15 Subpart B Class A), IC (ICES-003:2020 Issue7, Class A), RCM (AS/NZS CISPR 32 Class A), VCCI (VCCI-CISPR 32 Class A); Safety: UKCA (BS EN 62368-1:2014+A11:2017), UL (UL 62368-1), CB (IEC/EN 62368-1, IEC/EN 60950-22, IEC/EN 62471); Environment: K10 (IEC 62282), IP66 (IEC 60529), NEMA (NEMA 250 Type 4X); IA: BIS (IS 13252), BSMI

**Operating Temperature** Starting Temperature:  
-40°C - 55°C (-40°F - 131°F)  
Working Temperature:  
-40°C - 60°C (-40°F - 140°F) (IR on)

**Humidity** 98% RH (non-condensing)

### System Requirements

**Operating System** Microsoft Windows 10/8/7  
Mac: 10.12 (Chrome only)

**Web Browser** Chrome 58.0 or above  
Internet Explorer 10/11

**Other Players** VLC: 1.1.11 or above

### Included Accessories

**Packing Contents** Wall mount bracket, Screw pack, Screws and anchors, T10 and T25 L-wrench, Waterproof round cap, Quick installation guide, Terminal blocks (for DI/DO audio, AC/DC/GND wires, RS485), Ground wire.

### DORI (EN 62676-4 Standard)

**Detect (25PPW/ 8PPF)** Wide: 104.1 m (341.5 ft)  
Tele: 2969.8 m (9743.4 ft)

**Observe (63PPW/ 19PPF)** Wide: 41.3 m (135.5 ft)  
Tele: 1178.5 m (3866.4 ft)

**Recognize (125PPW/ 36PPF)** Wide: 20.8 m (68.2 ft)  
Tele: 694 m (1948.8 ft)

**Identify (250PPW/ 76PPF)** Wide: 10.4 m (34.1 ft)  
Tele: 297 m (974.3 ft)





1080P HDMI Extender, by J-Tech...

4.4 ★★★★★ 1,971 \$42.89 prime

Back to results



3 VIDEOS



### OREI HDBaseT 4K 60Hz HDMI Extender over Cat5e/6 Ethernet LAN cable - Up to 115 Ft - IR, CEC, RS-232, PoC

Visit the OREI Store

4.4 ★★★★★ 390 ratings

Search this page

\$119.99

Or \$12.06 mo (12 mo). Select from 1 plan

prime Two-Day

FREE Returns

Coupon: 5% coupon applied to one item per order at checkout

Roll over image to zoom in

## 6 – ACCESS CONTROL SUBMITTALS

The submittal shows the control station electronics but DOES NOT specify a control/scheduling computer, nor does it specify a computer to create and program the access badges. The library does **NOT** want these functions to be off-loaded to the Parish Government. **SENT PRICE LAST WEEK**

Having to go to the Parish government complex to get new cards activated or deactivated does not allow timely changes and requires frequent car trips.

Having the control function “in the cloud” to the Parish government computer will cause problems with building and room entry if:

- The Library’s Internet connection goes down.
- The Parish Government’s Internet connection goes down.
- The Parish Government’s control computer is down. This causes problems when the library is open but the government complex is closed, and we can’t get ahold of Parish Government IT staff.

Please add these computers and software to the submittal.

