

Project: St. Bernard Parish – Public Library
Judge Perez Drive
St. Bernard Parish, LA
Parish Project No. SBPG/NPL
ABM Project No. 201803
MBA Project No. 11884

Date: July 16, 2024

Subject: REQUEST FOR INFORMATION

To: Mathes Brierre Architects
Phone: 504-586-9303

From: Gibbs Construction
Phone: 504-733-4336

Attn: Kurt Rowe
Copy:

RFI Number: 95
RFI Title: Fax Machine Receptacle & Data Elevation

References: Attached

Description of Request for Information in Detail:

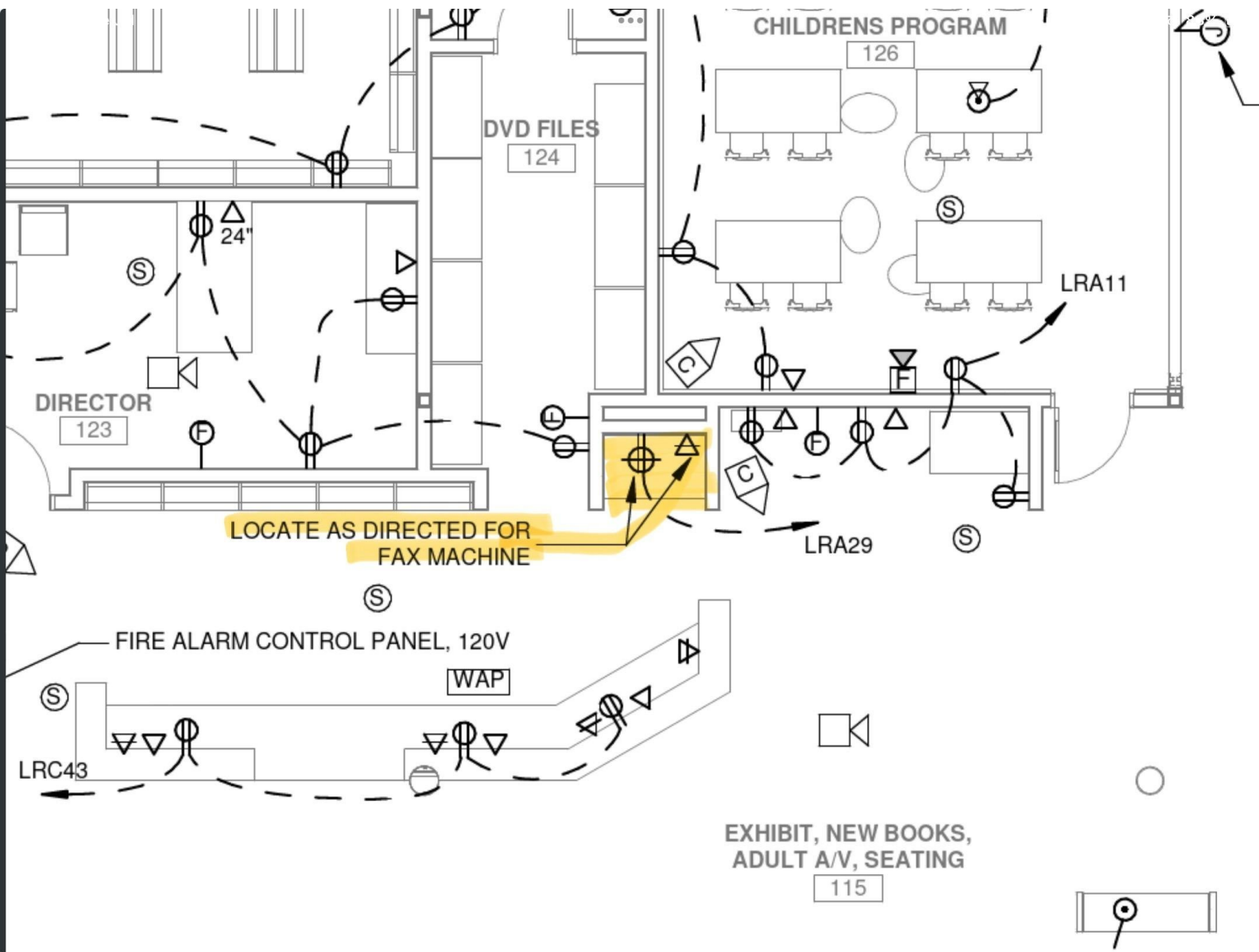
Please provide an elevation for the data and the receptacle for the fax machine. Please see attached clouded area.

MBA Response:

Response by: 7/30/24
Response date:

This reply is not an authorization to proceed with work involving additional cost, time or both. If any reply requires a change to the Contract Documents, a Change Order must be executed in accordance with the Contract Documents.

END of Request for Information



⊗	SAME AS ⊗ EXCEPT WALL MOUNTED. ...
S	20A/1P WALL SWITCH. SUBSCRIPT INDICATES FIXTURES TO BE CONTROLLED.
S ²	20A/2P WALL SWITCH.
S ³	20A THREE-WAY WALL SWITCH.
S ^{WP}	SAME AS S EXCEPT WEATHERPROOF.
[S]	AUTOMATIC LIGHTING SHUTOFF DEVICE, CEILING MOUNTED. SUBSCRIPT INDICATES FIXTURES TO BE CONTROLLED.
[S]	AUTOMATIC LIGHTING SHUTOFF DEVICE, WALL MOUNTED IN CORNER.
[T]	AUTOMATIC LIGHTING SHUTOFF DEVICE, TIMER TYPE, WALL MOUNTED.
[O]	LIGHTING SHUTOFF DEVICE, WALL MOUNTED, TO BE ASSOCIATED WITH LIGHTING CONTROL PANEL.
⊖	20A/2P, 3-WIRE, 125V, GROUNDING TYPE DUPLEX RECEPTACLE, NEMA 5-20R, TAMPER-RESISTANT.
⊖	SAME AS ⊖ EXCEPT MOUNTED ABOVE COUNTER AT HEIGHT AS DIRECTED.
GFI ⊖	SAME AS ⊖ EXCEPT WITH GROUND FAULT INTERRUPTER.
GFI ⊖	SAME AS GFI ⊖ EXCEPT MOUNTED ABOVE COUNTER AT HEIGHT AS DIRECTED.
WP ⊖	SAME AS GFI ⊖ EXCEPT WEATHERPROOF.
EWC ⊖	SAME AS GFI ⊖ EXCEPT MOUNTED AT HEIGHT AS DIRECTED FOR ELECTRIC WATER COOLER.
⊖⊖	DOUBLE DUPLEX RECEPTACLE.
⊖	SAME AS ⊖ EXCEPT FLUSH CEILING MOUNTED FOR PROJECTOR.
⊙	POWER FLOOR OUTLET WITH (1) DUPLEX RECEPTACLE.
⊙	POWER/DATA FLOOR OUTLET WITH (1) DUPLEX RECEPTACLE AND (2) DATA JACKS IN FLOOR BOX. SEE SPECIFICATIONS. PROVIDE A 1" RACEWAY (FOR VOICE/DATA CABLES) IN FLOOR SLAB AND UP WALL TO ABOVE NEAREST ACCESSIBLE CEILING.