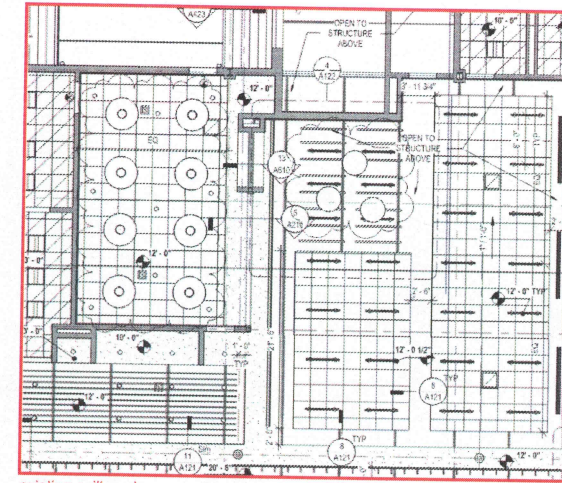
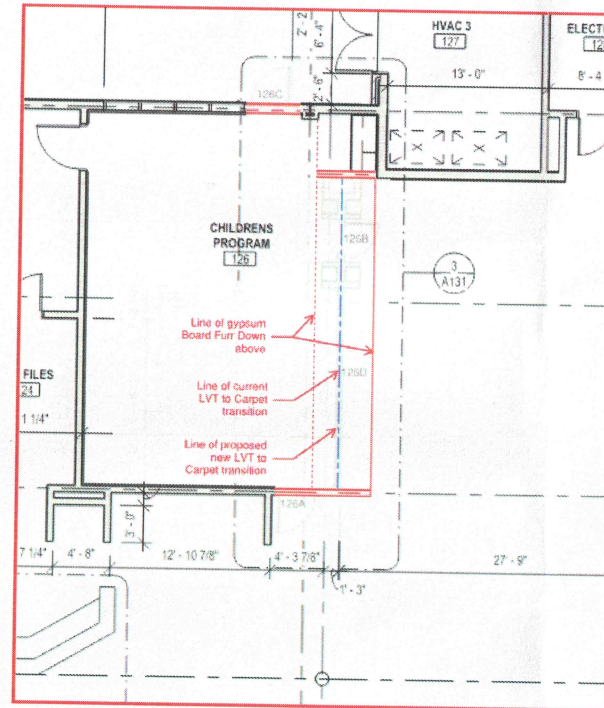
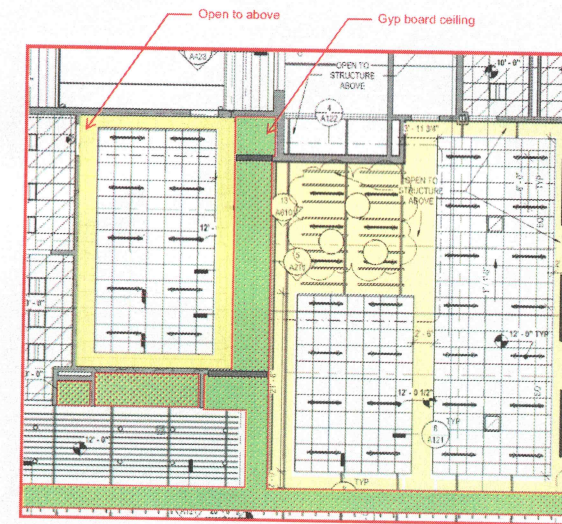


Children's Program Room:

- Remove Doors 126A, 126B, 126C & 126D
- Remove wall and built in shelving associated with doors 126D & 126B
- Fill in door 126A and extend wall to align with edge of gypsum board ceiling.
- Adjust LVT and Carpet line to align with edge of Gypsum Board ceiling.
- Ceiling revisions in Children's Room to pull Suspended Ceiling away from walls and paint exposed structure above to better match adjacent ceiling design.
- Change round light fixtures to linear light fixtures to match adjacent spaces. Count will change from 8 to 10.



existing ceiling plan



revised ceiling plan

APPROVED

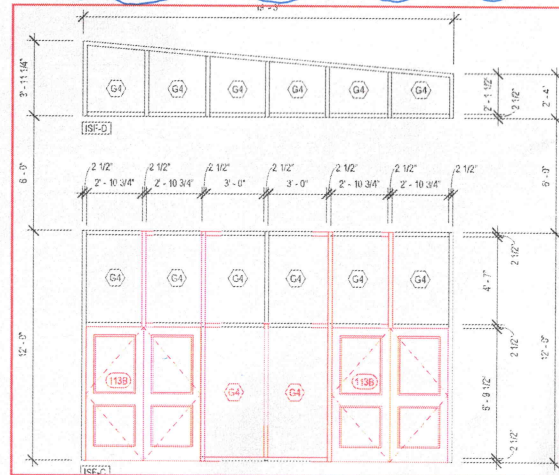
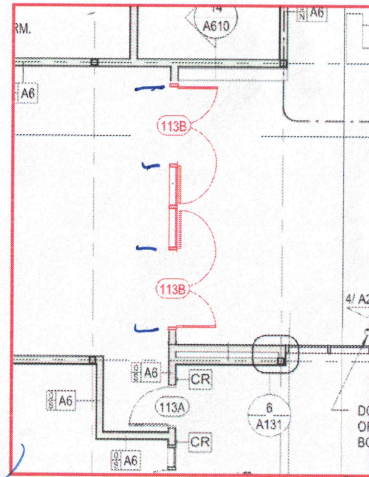
Ethel B. Llamas
01/22/2024

[Signature]

Multi-Purpose Room:

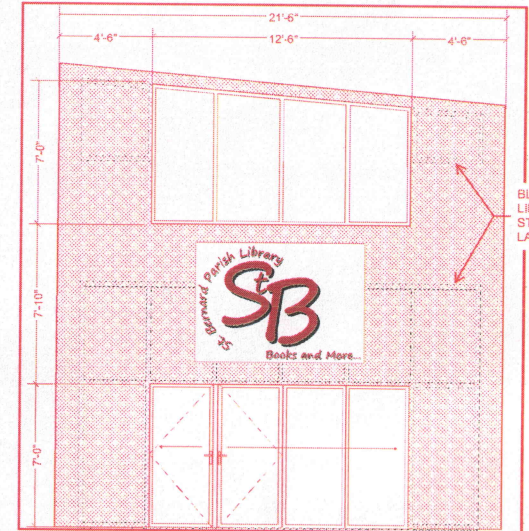
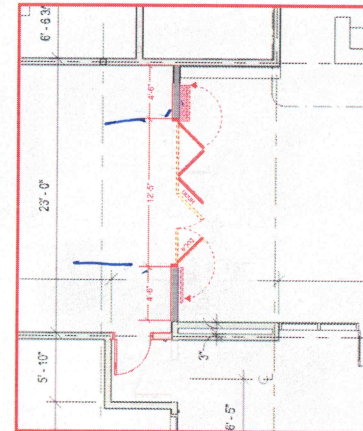
Option 1:

- Replace existing (1) dbl door with (2) dbl doors.

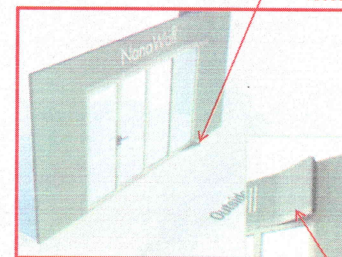


Option 2:

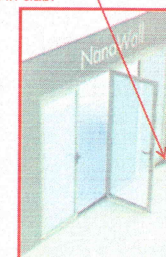
- Remove existing 19" x 12' interior storefront system. (6 bays - one 6' wide dbl door)
- Replace with 12'-6" x 7" "Fold Flat" Nana Wall. (4 bays two 3' wide swing doors)
- Remove existing upper 19" x 4' storefront windows
- Replace with 12'-6" x 7' storefront window
- Nana Wall will require:
 - Furr-out at head of wall to house top track.
 - Additional metal framing will be required at head and jambs
- Consider adding graphic between door and clerestory windows.
- Revise Lobby entrance to swing door out for egress.



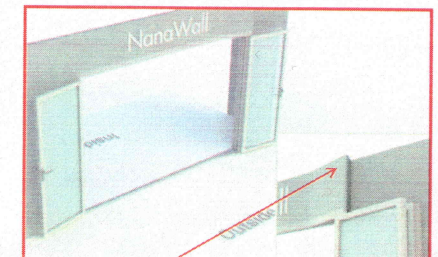
BLACK DASHED LINE IS CURRENT STOREFRONT LAYOUT



Base track will be recessed in slab.



Note furr-out to accommodate top track.



01/22/2024
Esther R. James