

FLOOR PLAN - POWER & SPECIAL SYSTEMS
 SCALE: 1/8" = 1'-0"

NOTES:
 1. MAINTAIN A MINIMUM OF 24" SERVICE CLEARANCE ON THE LEFT SIDE, RIGHT SIDE, AND REAR OF EACH VAV BOX. THERE SHALL BE NO SPRINKLER HEADS, SPRINKLER PIPING, ELECTRICAL RACEWAYS, SPECIAL SYSTEM RACEWAYS, CONTROL RACEWAYS, CABLES, PIPING, OR ANY OTHER ITEMS INSTALLED IN THE SERVICE AREA EXCEPT FOR BRANCH PIPING AND RACEWAYS SERVING THE RESPECTIVE VAV BOX. COORDINATE TRADES.

| No. | Description | Date |
|-----|-------------|------|
| | | |
| | | |

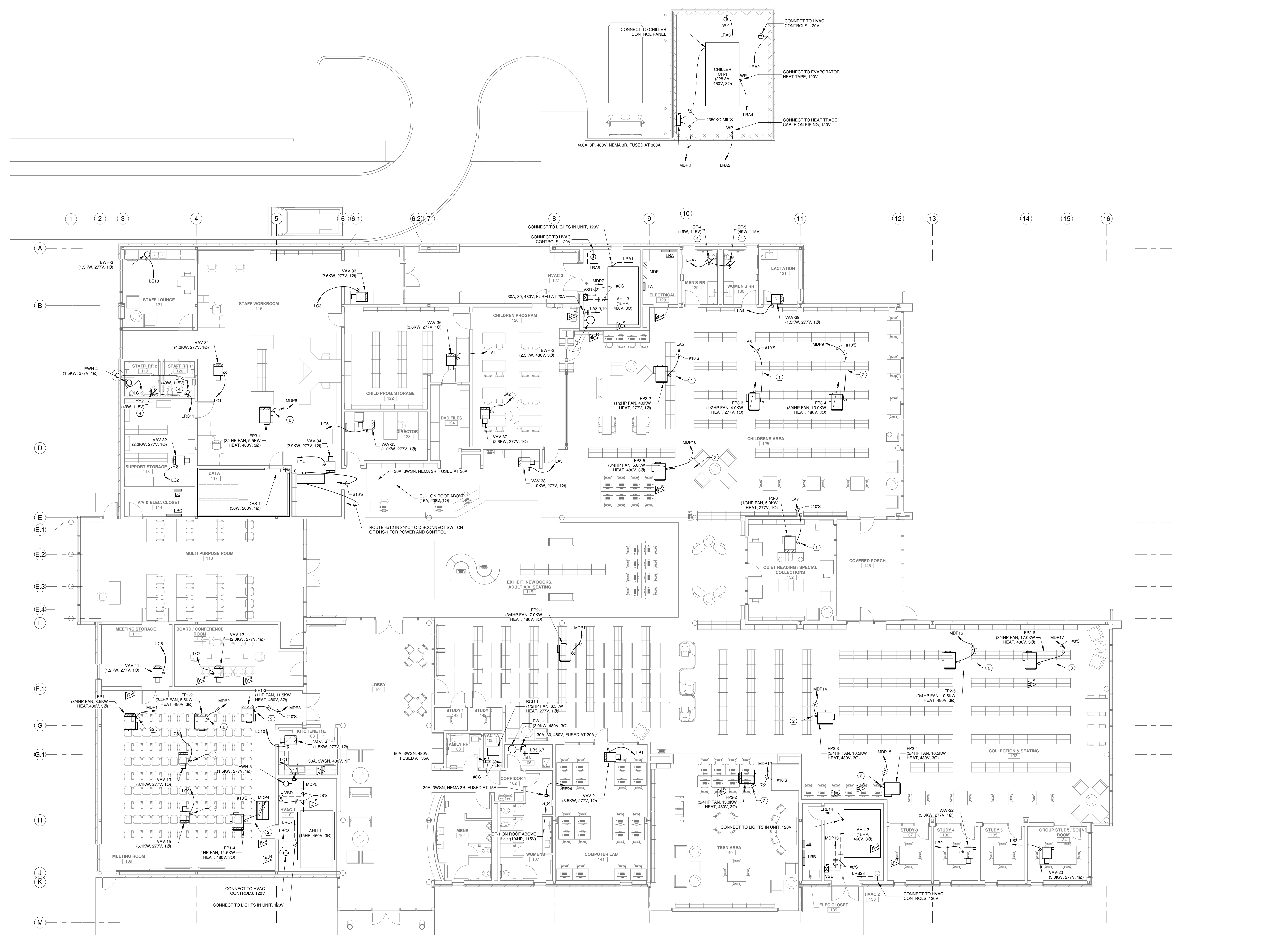
KEY PLAN

Mathes Brierre + **MB**
 ARCHITECTS ARCHITECTS BEAZLEY MOLIÈRE
 A JOINT VENTURE
 201 St. Charles Avenue, Forty First Floor
 New Orleans, Louisiana 70170-4100
 Voice: 504.586.5903 Fax: 504.582.1305
 300 Heymann Blvd.
 Lafayette, Louisiana 70503
 337.233.0614

PROJECT TITLE
ST. BERNARD PARISH PUBLIC LIBRARY
 ST. BERNARD PARISH
 75% CONSTRUCTION DOCUMENTS

| | | | |
|--------------------------------------|-----|--------------|------------|
| DESIGNED BY | SAO | CHECKED BY | LRP |
| DRAWN BY | SAO | DATE | 04.03.2020 |
| SHEET TITLE | | PROJECT NO. | |
| FLOOR PLAN - POWER & SPECIAL SYSTEMS | | MBA - 11884 | |
| PROJECT NO. | | SHEET NO. | |
| GVA ENGINEERING, L.L.C. | | ABM - 201813 | |
| PROJECT No. 3931 | | E201 | |

NOT FOR CONSTRUCTION
 GVA ENGINEERING, L.L.C.
 PROJECT No. 3931



FLOOR PLAN - MECHANICAL EQUIP POWER

SCALE: 1/8" = 1'-0"
 NOTES:
 1. MAINTAIN A MINIMUM OF 24" SERVICE CLEARANCE ON THE LEFT SIDE, RIGHT SIDE, AND REAR OF EACH VAV BOX. THERE SHALL BE NO SPRINKLER HEADS, SPRINKLER PIPING, ELECTRICAL, RACEWAYS, SPECIAL SYSTEM RACEWAYS, CONTROL, RACEWAYS, CABLES, PIPING, OR ANY OTHER ITEMS INSTALLED IN THE SERVICE AREA EXCEPT FOR BRANCH PIPING AND RACEWAYS SERVING THE RESPECTIVE VAV BOX. COORDINATE TRADES.

- SPECIFIC NOTES:**
- 1 30A, 1P TOGGLE SWITCH SIMILAR TO HUBBELL HBL3031.
 - 2 30A, 3P TOGGLE SWITCH SIMILAR TO HUBBELL HBL7810D.
 - 3 40A, 3P TOGGLE SWITCH SIMILAR TO HUBBELL HBL7843D.
 - 4 ROUTE THROUGH AUTOMATIC LIGHTING SHUTOFF DETECTOR IN ROOM USING 120V POWER PACK.

NOT FOR CONSTRUCTION

GVA ENGINEERING, L.L.C.
 PROJECT No. 3931

| | |
|--|-----------------|
| DESIGNED BY SAO | CHECKED BY LRP |
| DRAWN BY SAO | DATE 04.03.2020 |
| SHEET TITLE FLOOR PLAN - MECH. EQUIP. POWER | |
| PROJECT NO. MBA - 11884 | SHEET NO. E202 |
| PROJECT NO. ABM - 201813 | |

| No. | Description | Date |
|-----|-------------|------|
| | | |
| | | |

KEY PLAN

Mathes Brierre + **BM**
 ARCHITECTS ARCHITECTS BEAZLEY MOLIÈRE
 A JOINT VENTURE

201 St. Charles Avenue, Forty First Floor
 New Orleans, Louisiana 70170-4100
 Voice: 504.586.5903. Fax: 504.582.1305

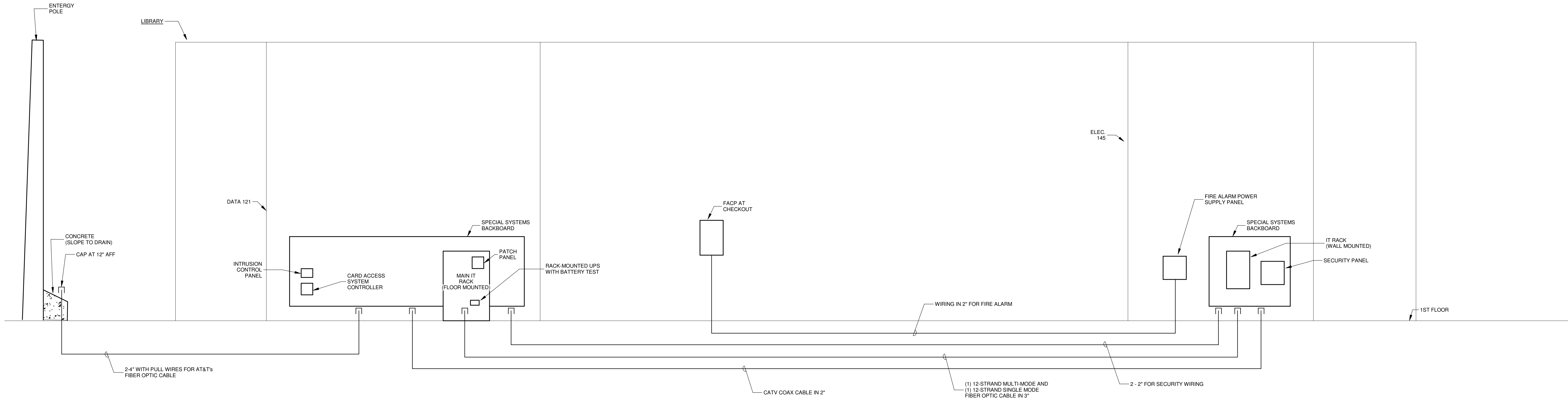
300 Heymann Blvd.
 Lafayette, Louisiana 70503
 337.233.0614

PROJECT TITLE

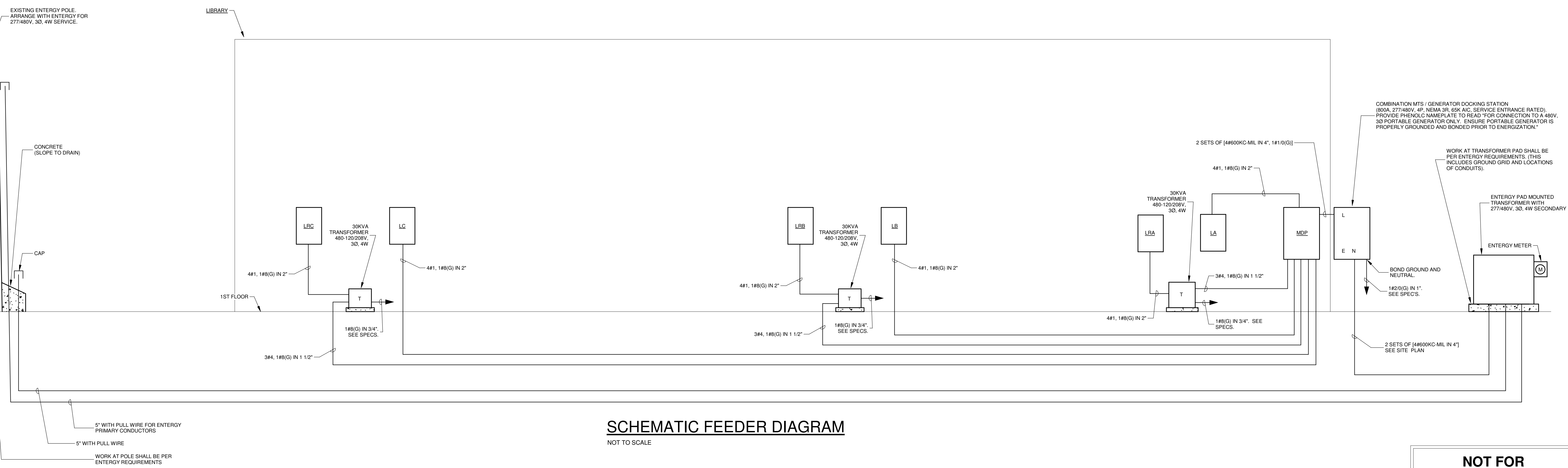
ST. BERNARD PARISH PUBLIC LIBRARY

ST. BERNARD PARISH

75% CONSTRUCTION DOCUMENTS



SPECIAL SYSTEMS RISER DIAGRAM
NOT TO SCALE



SCHEMATIC FEEDER DIAGRAM
NOT TO SCALE

| No. | Description | Date |
|-----|-------------|------|
| | | |
| | | |
| | | |

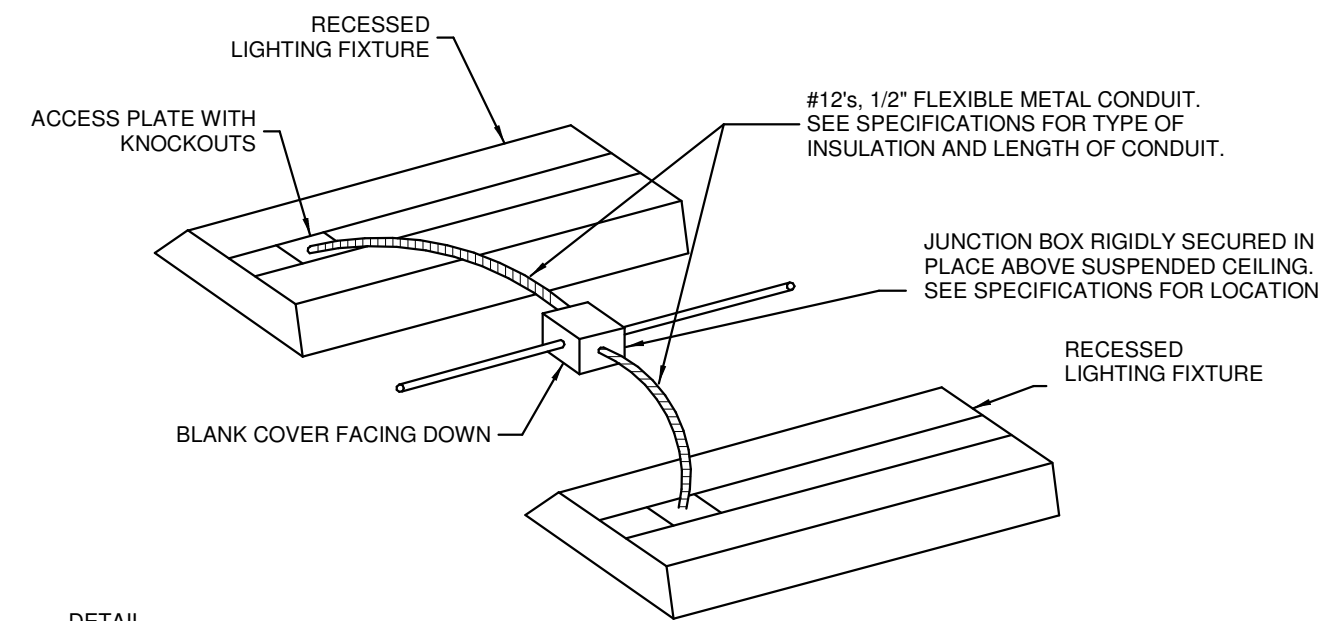
KEY PLAN

Mathes Brierre + **IBM**
ARCHITECTS ARCHITECTS BEAZLEY MOLIÈRE
A JOINT VENTURE
201 St. Charles Avenue, Forty First Floor
New Orleans, Louisiana 70170-4100
Voice: 504.586.5903. Fax: 504.582.1305
300 Heymann Blvd.
Lafayette, Louisiana 70503
337.233.0614

PROJECT TITLE
ST. BERNARD PARISH PUBLIC LIBRARY
ST. BERNARD PARISH
75% CONSTRUCTION DOCUMENTS

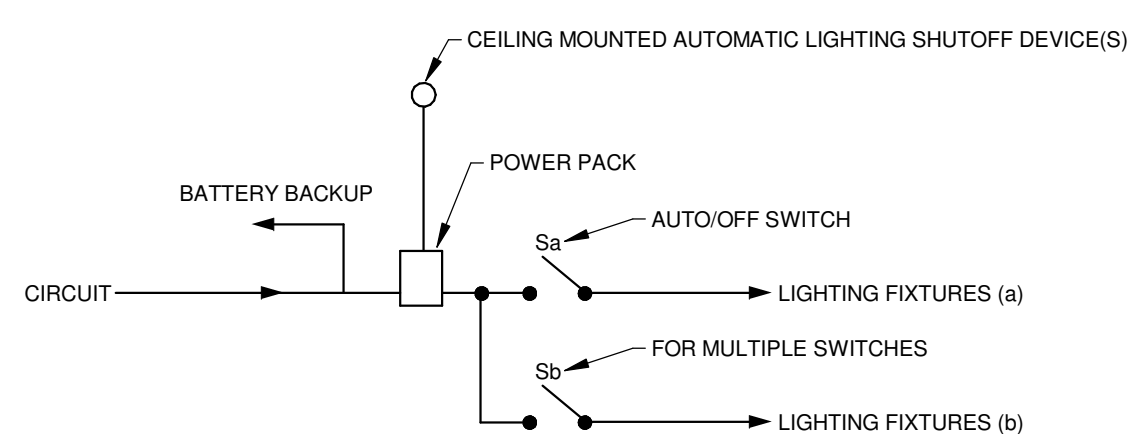
| | |
|--|-------------------|
| DESIGNED BY SAO | CHECKED BY LRP |
| DRAWN BY SAO | DATE 04.03.2020 |
| SHEET TITLE ELECTRICAL SCHEMATIC DIAGRAMS | |
| PROJECT NO. MBA - 11884 ABM - 201813 | SHEET NO. E301 |

NOT FOR CONSTRUCTION
GVA ENGINEERING, L.L.C.
PROJECT No. 3931



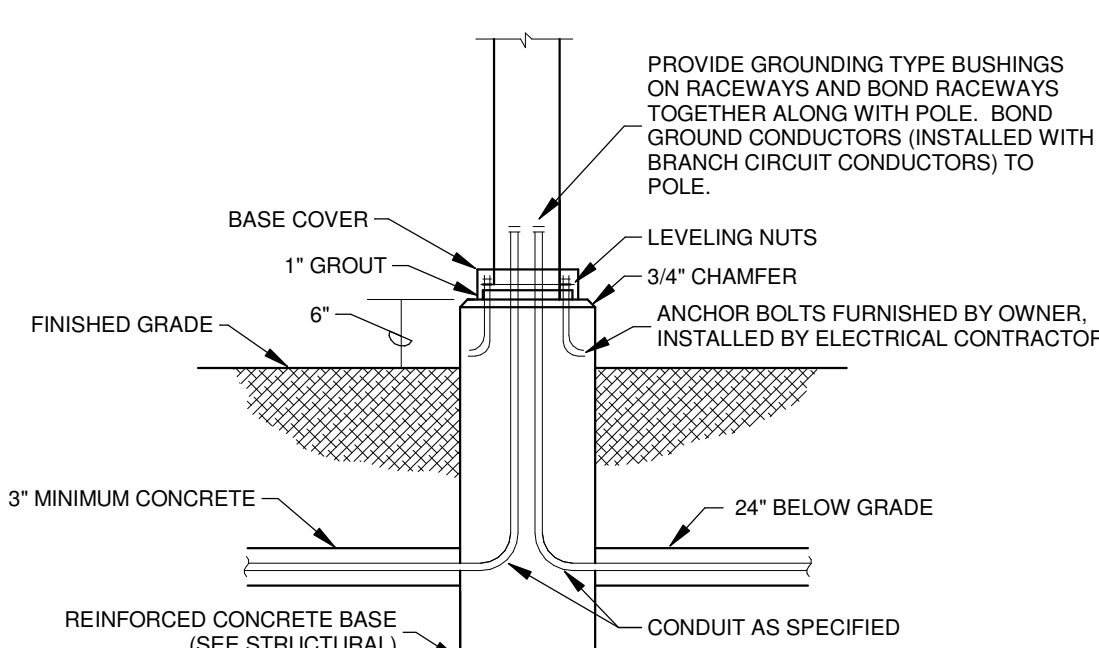
RECESSED MOUNTED FIXTURE

NOT TO SCALE
NOTE:
 1. MAXIMUM OF (2) FIXTURES SHALL BE SUPPLIED BY EACH JUNCTION BOX.



LIGHTING CONTROL DIAGRAM

NOT TO SCALE
NOTE:
 1. THIS IS A SUGGESTED ARRANGEMENT FOR LIGHTING CONTROL. THIS ARRANGEMENT MAY VARY DEPENDING ON THE PARTICULAR EQUIPMENT MANUFACTURER.



POLE BASE DETAIL

NOT TO SCALE
NOTE:
 1. SOME LOCATIONS MAY REQUIRE UP TO THREE CONDUITS.
 2. FOUNDATION SHALL HAVE DIAMETER 2\"/>

SYMBOL SCHEDULE

- LED FIXTURE, RECESSED.
- LED FIXTURE, SUSPENDED OR SURFACE MOUNTED.
- LED DOWNLIGHT FIXTURE, RECESSED.
- LED FIXTURE, WALL MOUNTED.
- LED FIXTURE, POLE MOUNTED.
- LED LINEAR FIXTURE, PENDANT.
- LED LINEAR FIXTURE, WALL MOUNTED.
- EXIT LIGHT, TOP MOUNTED, SINGLE FACE (SURFACE OR SUSPENDED).
- SAME AS EXCEPT WITH DIRECTIONAL ARROW.
- SAME AS EXCEPT DOUBLE FACE WITH DIRECTIONAL ARROWS.
- SAME AS EXCEPT WALL MOUNTED.
- 20A/1P WALL SWITCH. SUBSCRIPT INDICATES FIXTURES TO BE CONTROLLED.
- 20A/2P WALL SWITCH.
- 20A THREE-WAY WALL SWITCH.
- AUTOMATIC LIGHTING SHUTOFF DEVICE, CEILING MOUNTED. SUBSCRIPT INDICATES FIXTURES TO BE CONTROLLED.
- AUTOMATIC LIGHTING SHUTOFF DEVICE, WALL MOUNTED IN CORNER.
- AUTOMATIC LIGHTING SHUTOFF DEVICE, TIMER TYPE, WALL MOUNTED.
- 20A/2P, 3-WIRE, 125V, GROUNDING TYPE DUPLEX RECEPTACLE, NEMA 5-20R, TAMPER-RESISTANT.
- SAME AS EXCEPT MOUNTED ABOVE COUNTER AT HEIGHT AS DIRECTED.
- SAME AS EXCEPT WITH GROUND FAULT INTERRUPTER.
- SAME AS EXCEPT WEATHERPROOF.
- SAME AS EXCEPT MOUNTED AT HEIGHT AS DIRECTED FOR ELECTRIC WATER COOLER.
- DOUBLE DUPLEX RECEPTACLE.
- POWER/DATA FLOOR OUTLET WITH (1) DUPLEX RECEPTACLE AND (2) DATA JACKS IN FLOOR BOX. SEE SPECIFICATIONS FOR TYPE OF RECEPTACLE AND DATA JACKS IN FLOOR BOX. PROVIDE A 1\"/>
- DISTRIBUTION PANEL.
- VOICE/DATA OUTLET, WALL MOUNTED, WITH 1\"/>
- SAME AS EXCEPT MOUNTED ABOVE COUNTER AS DIRECTED.
- WIRELESS ACCESS POINT, CEILING MOUNTED.
- SECURITY SYSTEM KEYPAD ON WALL MOUNTED OUTLET BOX.
- SECURITY SYSTEM PASSIVE INFRARED SENSOR, CEILING MOUNTED ON OUTLET BOX.
- SECURITY SYSTEM PASSIVE INFRARED SENSOR, ON WALL MOUNTED OUTLET BOX.
- IP CAMERA, CEILING MOUNTED ON OUTLET BOX. PROVIDE WIRING PER SPECS.
- IP CAMERA, WALL MOUNTED AT HEIGHT AS DIRECTED WITH 1\"/>
- CARD READER, WALL MOUNTED AT HEIGHT AS DIRECTED WITH WIRING IN 1\"/>
- FIRE ALARM PULL STATION, WALL MOUNTED.
- FIRE ALARM AUDIOVISUAL SIGNAL UNIT, WALL MOUNTED.
- FIRE ALARM AUDIOVISUAL SIGNAL UNIT, CEILING MOUNTED.
- FIRE ALARM VISUAL SIGNAL UNIT, WALL MOUNTED.
- FIRE ALARM SMOKE DETECTOR, CEILING MOUNTED.
- FIRE ALARM HEAT DETECTOR, CEILING MOUNTED.
- FIRE ALARM HOLD-OPEN DEVICE, WALL MOUNTED.
- AIR-STREAM SMOKE DETECTOR ("S" INDICATES IN SUPPLY AIR-STREAM, "R" INDICATES IN RETURN AIR-STREAM).
- SPRINKLER SYSTEM FLOW SWITCH. (FURNISHED UNDER MECHANICAL DIVISION)
- SPRINKLER SYSTEM VALVE SUPERVISORY SWITCH. (FURNISHED UNDER MECHANICAL DIVISION)
- FIRE ALARM MONITOR MODULE.
- SAFETY SWITCH.
- COMBINATION STARTER AND DISCONNECT SWITCH (FURNISHED UNDER MECHANICAL DIVISION). "VSD" INDICATES VARIABLE SPEED DRIVE.
- "WP" ADJACENT TO EQUIPMENT INDICATES THAT THE EQUIPMENT SHALL BE WEATHERPROOF TYPE.
- WIRING IN RACEWAY CONCEALED OVERHEAD OR IN WALLS (CROSSBARS DENOTE NUMBER OF CONDUCTORS WHEN MORE THAN TWO). REQUIRED GREEN EQUIPMENT GROUNDING CONDUCTOR IS NOT SHOWN AS A CROSSBAR. ARROWS INDICATE NUMBER OF CIRCUITS.
- WIRING IN RACEWAY RUN EXPOSED.
- WIRING IN RACEWAY RUN CONCEALED IN OR UNDER FLOOR (OR UNDERGROUND).
- SOUND SYSTEM SPEAKER, CEILING MOUNTED.
- JUNCTION BOX 4 1/2\"/>
- JUNCTION BOX 4 1/2\"/> OR LESS, WALL MOUNTED.
- "E" ADJACENT TO A LIGHT FIXTURE INDICATES THAT IT UTILIZES AN EMERGENCY BACKUP BATTERY.
- "NL" ADJACENT TO A LIGHT FIXTURE INDICATES THAT IT IS A NIGHTLIGHT (ALWAYS ON).
- CABLE TV OUTLET, WALL MOUNTED, WITH 1\"/>

TIME SWITCH & CIRCUIT LIGHTING CONTACTOR & CIRCUIT EXTERIOR LIGHTING CIRCUITING

LIGHTING FIXTURE SCHEDULE

| Fixture Type | Manufacturer | Model | Description |
|--------------|------------------------------|---|---|
| F1A | PRESCOLITE | LTC-3RD-CM-15L35K9WD-DM1-S-BL-BT-BL SERIES OR EQUAL | LED CYLINDER, 3\"/> |
| F1B | PRESCOLITE | LTC-3RD-P-20L35K9WD-DM1-S-BL SERIES OR EQUAL | SAME AS F1A EXCEPT WITH 2,000 LUMEN OUTPUT (MINIMUM). |
| F1C | PRESCOLITE | LTC-3RD-CM-20L35K9WD-DM1-S-BL SERIES OR EQUAL | SAME AS F1A EXCEPT MEDIUM DISTRIBUTION AND WITH 2,000 LUMEN OUTPUT (MINIMUM). |
| F2A | PRESCOLITE | LTR-6RD-H-SL15L-DM1-LTR-6RD-T-SL35K9WDS-WT-824 SERIES OR EQUAL | RECESSED LED DOWNLIGHT, 6\"/> |
| F2B | PRESCOLITE | LTR-6RD-H-SL15L-DM1-LTR-6RD-T-SL35K9WDS-WT-824 SERIES OR EQUAL | SAME AS F2A EXCEPT WITH 600 LUMEN OUTPUT (MINIMUM). |
| F2C | PRESCOLITE | LTR-6RD-H-M-3DL-DM1-LTR-6RD-T-ML35K9WDS-WT-824 SERIES OR EQUAL | SAME AS F2A EXCEPT WITH 3,000 LUMEN OUTPUT (MINIMUM). |
| F3 | CAMMAN | P8992-48-LN-35K-CLV-MV-STBD-ACM SERIES OR EQUAL | 48\"/> |
| F3A | CAMMAN | P5892-72-LN-35K-CLV-MV-STBD-ACM SERIES OR EQUAL | SAME AS F3 EXCEPT 72\"/> |
| F4A | COLUMBIA | LCAT22-35VLG-R-ED1-U SERIES OR EQUAL | 2 1/2\"/> |
| F4B | COLUMBIA | LCAT22-35LWG-R-ED1-U SERIES OR EQUAL | SAME AS F4A EXCEPT WITH 2,350 LUMEN OUTPUT (MINIMUM). |
| F5 | LITECONTROL | 4L-R-D-307-30F-CX-35K-D050-D01-1C-UNV-EF SERIES OR EQUAL | 4\"/> |
| F6 | LITECONTROL | 2L-P-ID-STD-06-SOF-CX-35K-0030-D030-D01-1C-UNV-FAI-C90L SERIES OR EQUAL | 2\"/> |
| F7 | LITECONTROL | 2L-P-ID-STD-4-SOF-CX-35K-0030-D100 SERIES OR EQUAL | 2\"/> |
| F7A | LITECONTROL | 2L-P-ID-STD-4-SOF-CX-35K-0030-D100 SERIES OR EQUAL | 2\"/> |
| F8 | COLUMBIA | LCL-4-35-ML-ED-U SERIES OR EQUAL | 4\"/> |
| F9 | EATON MCGRAW-EDISON OR EQUAL | OLEON-AF-04-LED-U-T4FT-xx | POLE MOUNTED LED LIGHTING FIXTURE, 1 AMP DRIVE CURRENT, TYPE IV FORWARD THROW DISTRIBUTION, FINISH AS DIRECTED BY ARCHITECT. MOUNTING BRACKET FOR SQUARE POLE. (4) FIXTURE HEADS MOUNTED ON POLE, 120-277V, WITH MINIMUM 24 SQUARE FEET (4) LED SQUARE HEAD. POLE SHALL BE EATON SERIES, 20\"/> |
| F9A | EATON MCGRAW-EDISON OR EQUAL | | SAME AS F9 EXCEPT WITH MINIMUM 30,500 LUMENS PER (6) LED SQUARE HEAD. |
| F9B | EATON MCGRAW-EDISON OR EQUAL | | SAME AS F9 EXCEPT (1) HEAD MOUNTED ON A POLE, WITH TYPE III DISTRIBUTION, AND MINIMUM 18,500 LUMENS PER (3) LED SQUARE HEAD. |
| F9C | EATON MCGRAW-EDISON OR EQUAL | | SAME AS F9 EXCEPT (2) HEADS MOUNTED ON A POLE 90 DEGREES APART. |
| F10 | Cooper Lighting | ABB Arbor Boltard | WaveStream LED |

| No. | Description | Date |
|-----|-------------|--------|
| 1 | Revision 1 | Date 1 |
| | | |
| | | |

KEY PLAN

Mathes Briere ARCHITECTS
 201 St. Charles Avenue, Forty First Floor
 New Orleans, Louisiana 70170-4100
 Voice: 504.586.5905 Fax: 504.582.1305

300 Heymann Blvd.
 Lafayette, Louisiana 70503
 337.233.0614

PROJECT TITLE

ST. BERNARD PARISH PUBLIC LIBRARY

ST. BERNARD PARISH

75% CONSTRUCTION DOCUMENTS

| | |
|----------------------------------|-----------------|
| DESIGNED BY SAO | CHECKED BY LRP |
| DRAWN BY SAO | DATE 04.03.2020 |
| SHEET TITLE ELECTRICAL SCHEDULES | |
| PROJECT NO. MBA - 11884 | SHEET NO. E302 |
| ABM - 201813 | |

NOT FOR CONSTRUCTION

GVA ENGINEERING, L.L.C.
 PROJECT No. 3931

PLUMBING GENERAL NOTES

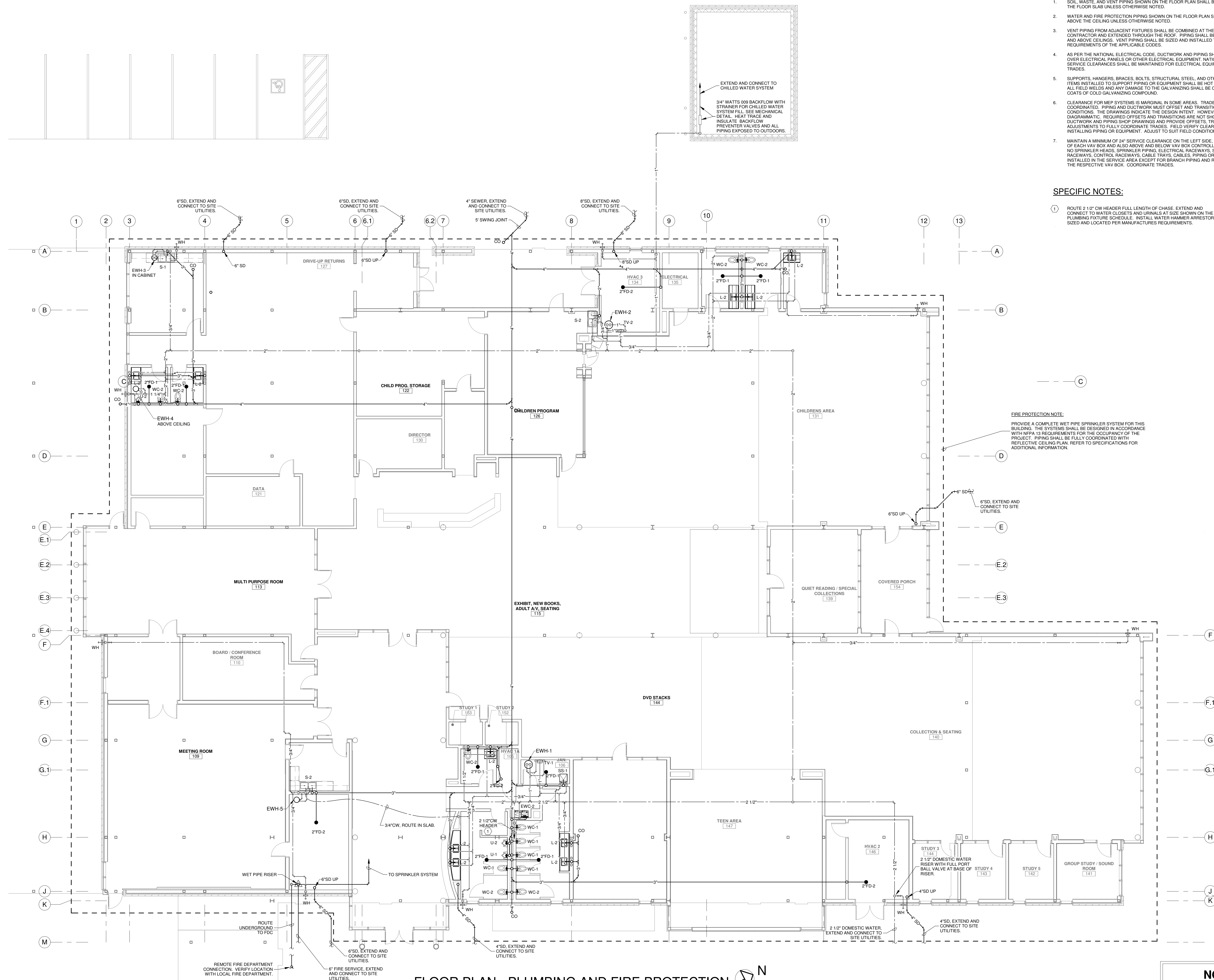
- SOIL, WASTE, AND VENT PIPING SHOWN ON THE FLOOR PLAN SHALL BE INSTALLED BELOW THE FLOOR SLAB UNLESS OTHERWISE NOTED.
- WATER AND FIRE PROTECTION PIPING SHOWN ON THE FLOOR PLAN SHALL BE INSTALLED ABOVE THE CEILING UNLESS OTHERWISE NOTED.
- VENT PIPING FROM ADJACENT FIXTURES SHALL BE COMBINED AT THE DISCRETION OF THE CONTRACTOR AND EXTENDED THROUGH THE ROOF. PIPING SHALL BE CONCEALED IN WALLS AND ABOVE CEILING. VENT PIPING SHALL BE SIZED AND INSTALLED TO MEET THE MINIMUM REQUIREMENTS OF THE APPLICABLE CODES.
- AS PER THE NATIONAL ELECTRICAL CODE, DUCTWORK AND PIPING SHALL NOT BE ROUTED OVER ELECTRICAL PANELS OR OTHER ELECTRICAL EQUIPMENT. NATIONAL ELECTRICAL CODE SERVICE CLEARANCES SHALL BE MAINTAINED FOR ELECTRICAL EQUIPMENT. COORDINATE TRADES.
- SUPPORTS, HANGERS, BRACES, BOLTS, STRUCTURAL STEEL AND OTHER MISCELLANEOUS ITEMS INSTALLED TO SUPPORT PIPING OR EQUIPMENT SHALL BE HOT DIPPED GALVANIZED. ALL FIELD WELDS AND ANY DAMAGE TO THE GALVANIZING SHALL BE COATED WITH TWO COATS OF COLD GALVANIZING COMPOUND.
- CLEARANCE FOR MEP SYSTEMS IS MARGINAL IN SOME AREAS. TRADES MUST BE CAREFULLY COORDINATED. PIPING AND DUCTWORK MUST OFFSET AND TRANSITION TO SUIT FIELD CONDITIONS. THE DRAWINGS INDICATE THE DESIGN INTENT. HOWEVER, PIPE ROUTING IS DIAGNOSTIC. REQUIRED OFFSETS AND TRANSITIONS ARE NOT SHOWN. PREPARE DUCTWORK AND PIPING SHOP DRAWINGS AND PROVIDE OFFSETS, TRANSITIONS AND ADJUSTMENTS TO FULLY COORDINATE TRADES. FIELD VERIFY CLEARANCES BEFORE INSTALLING PIPING OR EQUIPMENT. ADJUST TO SUIT FIELD CONDITIONS.
- MAINTAIN A MINIMUM OF 24" SERVICE CLEARANCE ON THE LEFT SIDE, RIGHT SIDE AND REAR OF EACH VAV BOX AND ALSO ABOVE AND BELOW VAV BOX CONTROLLERS. THERE SHALL BE NO SPRINKLER HEADS, SPRINKLER PIPING, ELECTRICAL RACEWAYS, SPECIAL SYSTEM RACEWAYS, CONTROL RACEWAYS, CABLE TRAYS, CABLES, PIPING OR ANY OTHER ITEMS INSTALLED IN THE SERVICE AREA EXCEPT FOR BRANCH PIPING AND RACEWAYS SERVING THE RESPECTIVE VAV BOX. COORDINATE TRADES.

SPECIFIC NOTES:

- ROUTE 2 1/2" CW HEADER FULL LENGTH OF CHASE. EXTEND AND CONNECT TO WATER CLOSETS AND URINALS AT SIZE SHOWN ON THE PLUMBING FIXTURE SCHEDULE. INSTALL WATER HAMMER ARRESTOR, SIZED AND LOCATED PER MANUFACTURERS REQUIREMENTS.

FIRE PROTECTION NOTE:

PROVIDE A COMPLETE WET PIPE SPRINKLER SYSTEM FOR THIS BUILDING. THE SYSTEMS SHALL BE DESIGNED IN ACCORDANCE WITH NFPA 13 REQUIREMENTS FOR THE OCCUPANCY OF THE PROJECT. PIPING SHALL BE FULLY COORDINATED WITH REFLECTIVE CEILING PLAN. REFER TO SPECIFICATIONS FOR ADDITIONAL INFORMATION.



FLOOR PLAN - PLUMBING AND FIRE PROTECTION
SCALE: 1/8" = 1'-0"

| No. | Description | Date |
|-----|-------------|------|
| | | |
| | | |

KEY PLAN

Mathes Briere + **BM**
ARCHITECTS ARCHITECTS BEAZLEY MOLIÈRE
A JOINT VENTURE
201 St. Charles Avenue, Forty First Floor
New Orleans, Louisiana 70170-4100
Voice: 504.586.5903 Fax: 504.582.1305
300 Heymann Blvd.
Lafayette, Louisiana 70503
337.233.0614

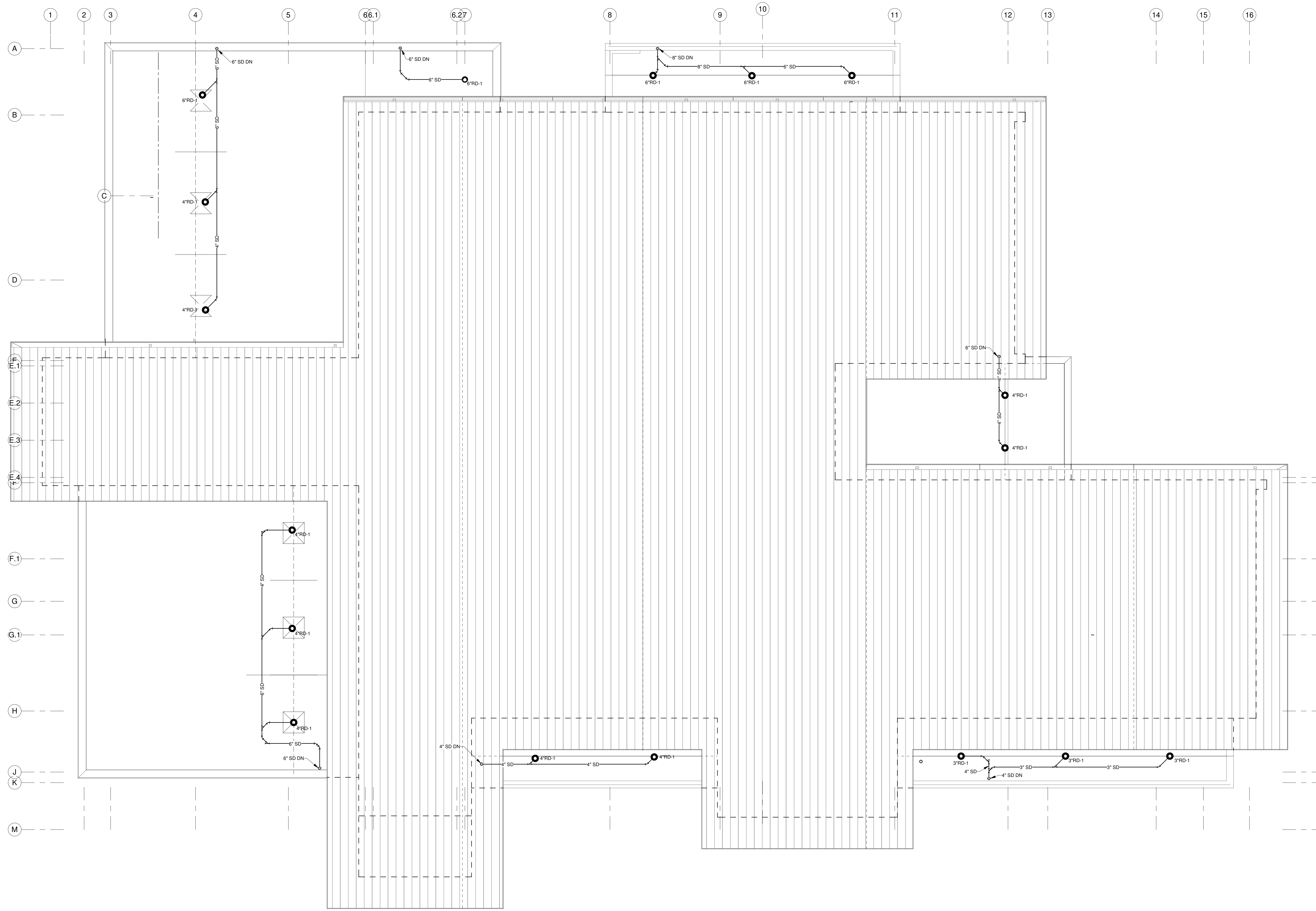
PROJECT TITLE

ST. BERNARD PARISH PUBLIC LIBRARY

ST. BERNARD PARISH

75% CONSTRUCTION DOCUMENTS

| | | | |
|--|-------------|--------------|------------|
| DESIGNED BY | DCC | CHECKED BY | DCC |
| DRAWN BY | GVT | DATE | 04.03.2020 |
| SHEET TITLE FLOOR PLAN - PLBG & FIRE PROTECTION | | | |
| PROJECT NO. | MBA - 11884 | SHEET NO. | PF101 |
| GVA ENGINEERING, L.L.C. PROJECT No. 3931 | | ABM - 201813 | |



| No. | Description | Date |
|-----|-------------|------|
| | | |
| | | |
| | | |

KEY PLAN

Mathes Brierre + /BM
ARCHITECTS ARCHITECTS BEAZLEY MOLIÈRE
A JOINT VENTURE

201 St. Charles Avenue, Forty First Floor
New Orleans, Louisiana 70170-4100
Voice: 504.586.5903. Fax: 504.582.1305
300 Heymann Blvd.
Lafayette, Louisiana 70503
337.233.0614

PROJECT TITLE

**ST. BERNARD
PARISH PUBLIC
LIBRARY**

ST. BERNARD PARISH

75% CONSTRUCTION DOCUMENTS

DESIGNED BY Designer CHECKED BY Checker

DRAWN BY Author DATE 04.03.2020

SHEET TITLE ROOF PLAN - PLBG AND FIRE PROTECTION

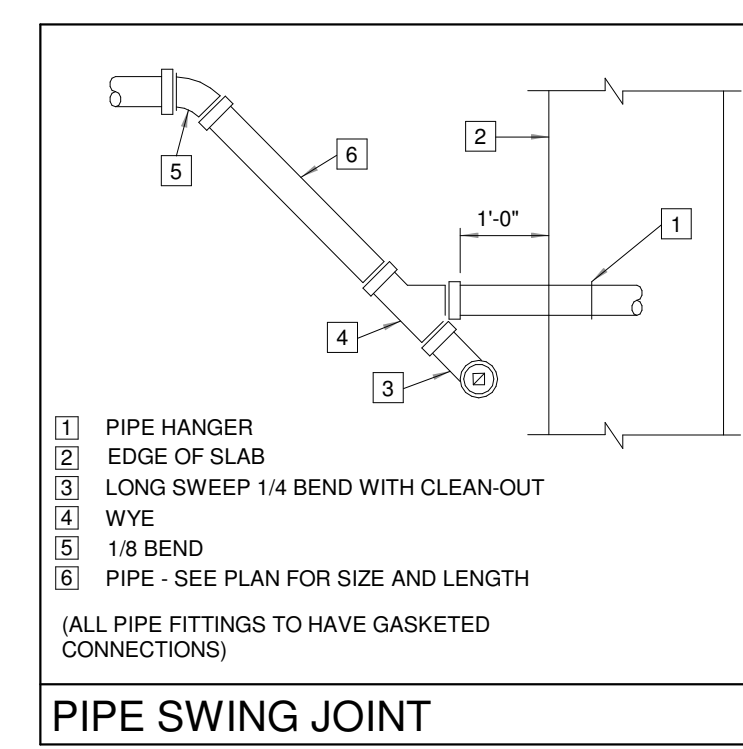
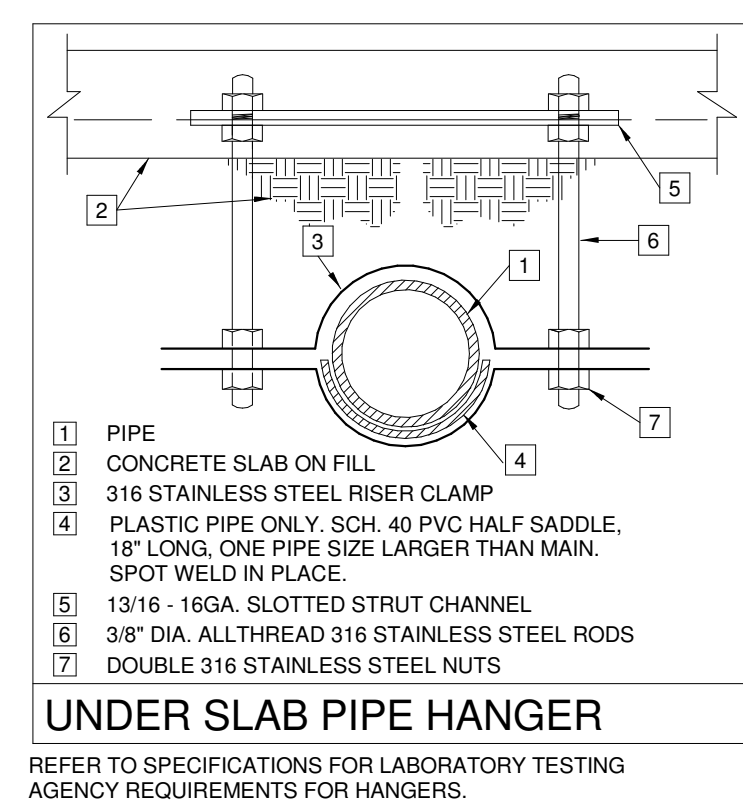
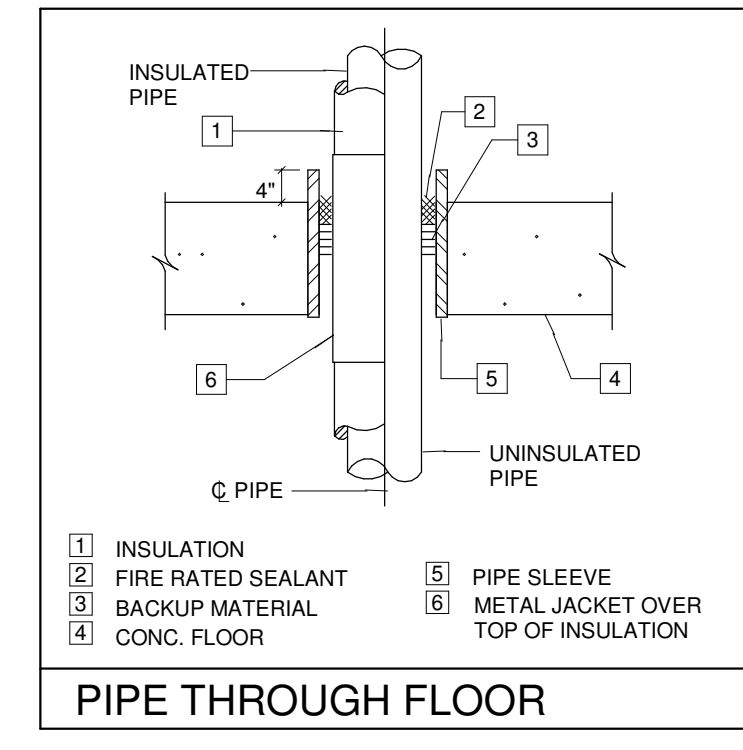
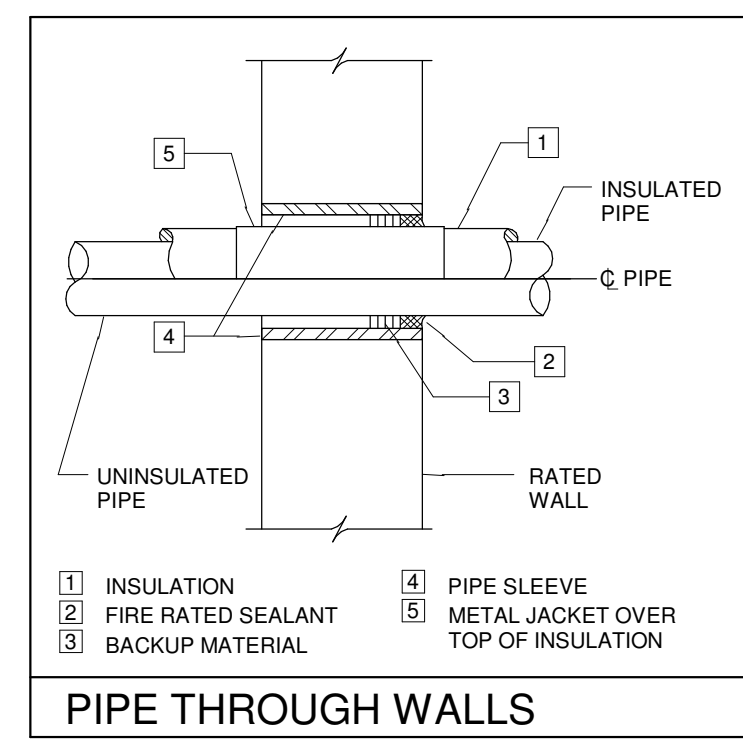
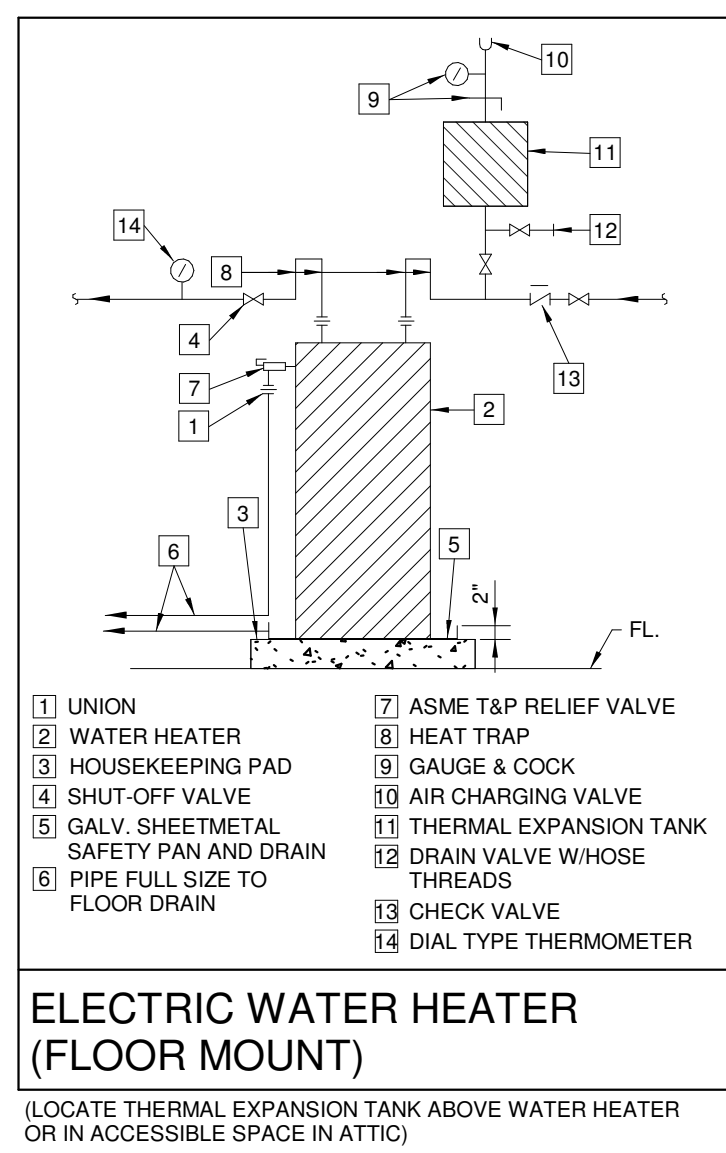
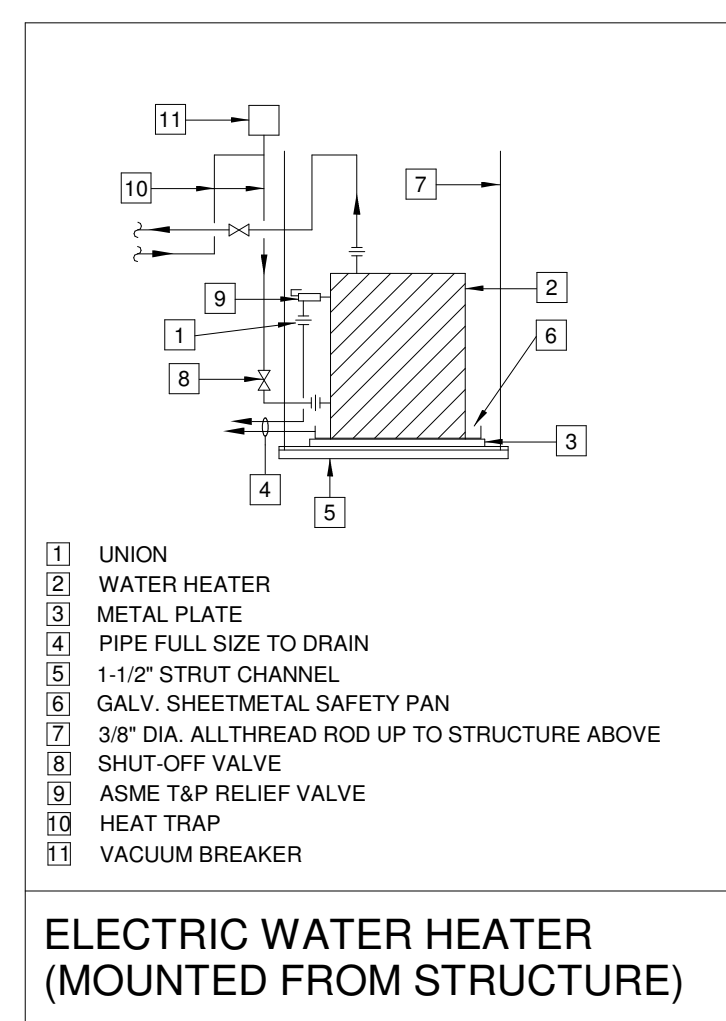
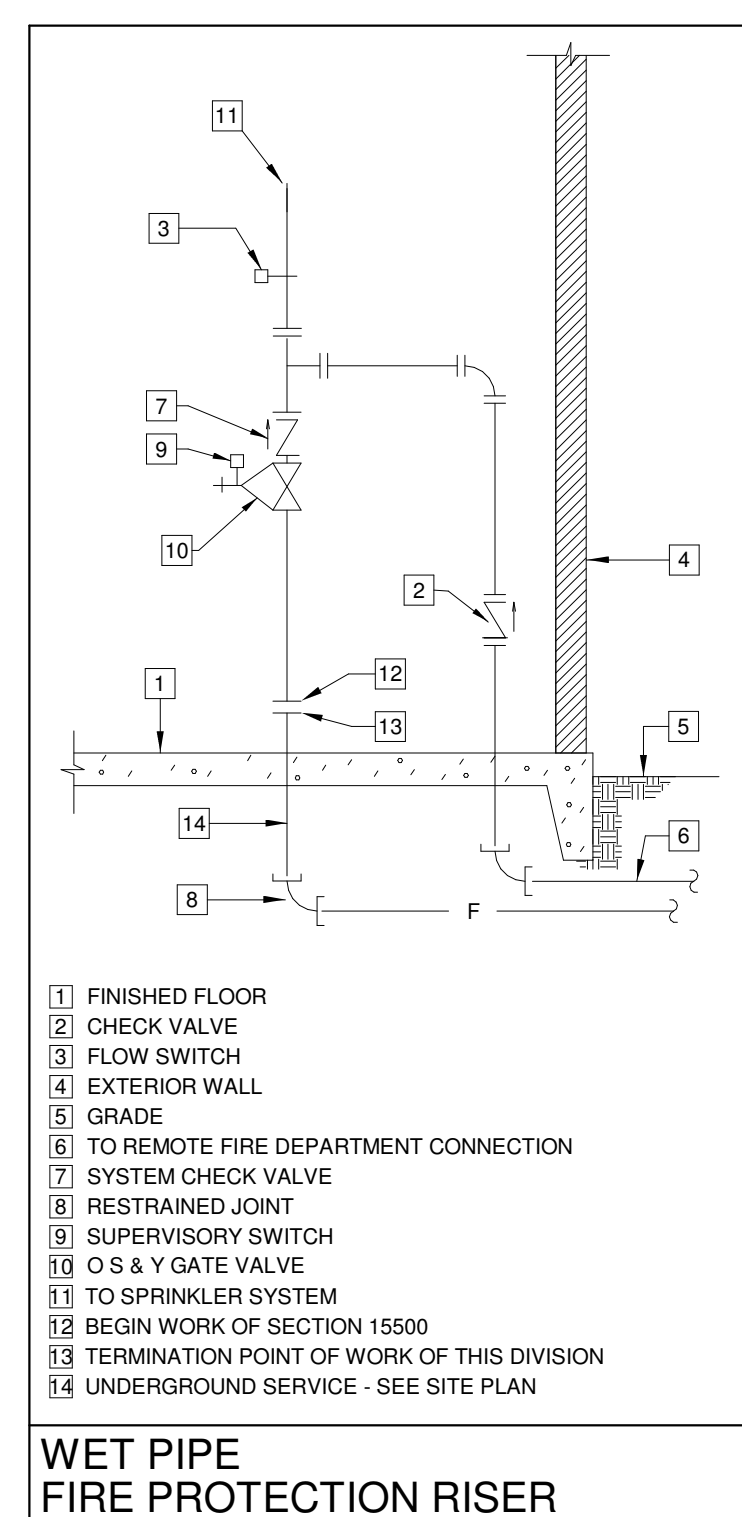
PROJECT NO. ABM - 201813 SHEET NO. PF102

**NOT FOR
CONSTRUCTION**

GVA ENGINEERING, L.L.C.
PROJECT No. 3931

ROOF PLAN - PLUMBING AND FIRE PROTECTION 

SCALE: 1/8" = 1'-0"



PLUMBING LEGEND

| | |
|-----|--------------------------|
| --- | SOIL AND WASTE PIPING |
| --- | VENT PIPING |
| --- | STORM DRAIN PIPING |
| --- | COLD WATER PIPING |
| --- | HOT WATER PIPING |
| --- | SHUT-OFF VALVE |
| --- | CHECK VALVE |
| --- | UNION |
| --- | AFF ABOVE FINISHED FLOOR |
| --- | VTR VENT THRU ROOF |
| --- | FD FLOOR DRAIN |
| --- | CO CLEANOUT |
| --- | WCO WALL CLEANOUT |
| --- | SJ SWING JOINT |

FIRE PROTECTION LEGEND

| | |
|-----|----------------------|
| --- | FIRE PROTECTION MAIN |
|-----|----------------------|

ELECTRIC WATER HEATER SCHEDULE

| HEATER NUMBER (EWH) | EWH-1 * | EWH-2 * | EWH-3, 4 & 5 |
|----------------------------|------------|------------|--------------|
| LOCATION | SEE PLANS | SEE PLANS | SEE PLANS |
| MANUFACTURER | A.O. SMITH | A.O. SMITH | A.O. SMITH |
| MODEL NUMBER | DEN-40 | DEN-30 | DEL-6 |
| OPERATING WEIGHT (LBS) | 460 | 350 | 85 |
| RECOVERY (GPH) | 12 | 10 | 6 |
| TEMPERATURE RISE (°F) | 100 | 100 | 100 |
| STORAGE CAPACITY (GALLONS) | 0 | 30 | 6 |
| STORAGE TEMPERATURE (°F) | 140 | 140 | 120 |
| KILOWATTS | 3 | 2.5 | 1.5 |
| VOLTAGE / PHASE | 460/3 | 460/1 | 277/1 |

* FACTORY SET AT 140°F

PLUMBING FIXTURE SCHEDULE

| FIXTURE | SYMBOL | WASTE | VENT | COLD WATER | HOT WATER |
|-----------------------|--------|-------|------|------------|-----------|
| WATER CLOSET | WC | 4" | 4" | 1/2" | ---- |
| URINAL | U | 2" | 2" | 1" | ---- |
| LAVATORY | L | 2" | 2" | 1/2" | 1/2" |
| SINK | S | 2" | 2" | 1/2" | 1/2" |
| FLOOR DRAINS * | FD | 2"-4" | 2" | ---- | ---- |
| MOP BASIN | MB | 3" | 2" | 1/2" | 1/2" |
| ELECTRIC WATER COOLER | EW | 2" | 2" | 1/2" | ---- |
| WATER SUPPLY BOX | WSB | ---- | ---- | 1/2" | ---- |

WATER PIPING SHOWN SERVING MORE THAN ONE FIXTURE SHALL BE RUN FULL-SIZE TO THE LAST FIXTURE. TAP-OFF WITH THE SCHEDULED SIZES TO EACH FIXTURE. SEE SPECIFICATIONS FOR FIXTURE DESCRIPTION.

* PROVIDE 1/2" FLOOR DRAIN TRAP PRIMER CONNECTION (MORE THAN ONE CONNECTION MAY BE REQUIRED) BETWEEN PRESSURE TYPE TRAP PRIMER AND NEAREST FLOOR DRAIN.

TEMPERING VALVE SCHEDULE

| VALVE NUMBER (TV) | TV-1 & TV-2 * |
|-----------------------------|--|
| LOCATION | SEE PLANS |
| MANUFACTURER | LEONARD |
| MODEL NUMBER | TM-26-LF |
| CAPACITY (GPM) | 10 |
| PRESSURE DIFFERENTIAL (PSI) | 10 |
| INLET HOT WATER (°F) | 140 |
| INLET COLD WATER (°F) | 40 |
| OUTLET TEMPERED WATER (°F) | 110 |
| ACCESSORIES | CABINET NO THERMOMETER YES VOLUME CONTROL YES VACUUM BREAKER NO FINISH ROUGH BRASS ALARM NO |

* MOUNT ON GALVANIZED UNISTRUT FRAME.

DRAIN SCHEDULE

| DESIG. | JAY R. SMITH No. | JOSAM No. | DESCRIPTION | REMARKS |
|--------|------------------|-----------|---|--|
| FD-1 | 2010-A-P050 | 30000-A | C-1 BODY WITH NICKEL BRONZE STRAINER & TRAP PRIMER CONNECTION | |
| FD-2 | 2010-F37 | 30000-FE1 | C-1 BODY WITH EXTENDED RIM NICKEL BRONZE STRAINER | INSTALL STRAINER RIM FLUSH WITH FINISHED FLOOR |

NOTES:
PROVIDE TRAP SEAL PRIMER CONNECTIONS ON ALL DRAINS NOT SPECIFICALLY DEDICATED TO DRAIN A NEW PLUMBING FIXTURE. UNLESS OTHERWISE NOTED OR INDICATED, OBTAIN WATER CONNECTION FROM NEAREST WATER CLOSET FLUSH VALVE AND, PIPE CONNECTION ON DRAIN, IF A WATER CLOSET FLUSH VALVE IS NOT READILY AVAILABLE, PROVIDE TRAP PRIMER WITH APPROVED BACKFLOW PREVENTER, EXTEND AND CONNECT IT TO NEAREST WATER SUPPLY AND PIPE TO CONNECTION ON DRAIN.

THERMAL EXPANSION TANK

| EXPANSION TANK NUMBER (TET) | TET-1 & TET-2 |
|-----------------------------|---------------|
| LOCATION | SEE PLANS |
| MANUFACTURER | ELBI |
| MODEL NUMBER | DTS-30 |
| OPERATING WEIGHT (LBS) | 110 |
| EXPANDED WATER (GALLONS) | 8 |
| RELIEF VALVE SETTING (PSI) | 50 |
| SUPPLY LINE PRESSURE (AVG) | 40 |

| No. | Description | Date |
|-----|-------------|------|
| | | |
| | | |
| | | |

KEY PLAN

Mathes Briere + **ABM**
ARCHITECTS ARCHITECTS BEAZLEY MOLIÈRE
A JOINT VENTURE

201 St. Charles Avenue, Forty First Floor
New Orleans, Louisiana 70170-4100
Voice: 504.586.5903. Fax: 504.582.1305

300 Heymann Blvd.
Lafayette, Louisiana 70503
337.233.0614

PROJECT TITLE

**ST. BERNARD
PARISH PUBLIC
LIBRARY**

ST. BERNARD PARISH

75% CONSTRUCTION DOCUMENTS

| | |
|---|-----------------------------|
| DESIGNED BY Designer | CHECKED BY Checker |
| DRAWN BY Author | DATE 04.03.2020 |
| SHEET TITLE SCHEDULES AND DETAILS | |
| PROJECT NO. | SHEET NO. |
| GVA ENGINEERING, L.L.C. PROJECT No. 3931 | MBA - 11884 ABM - 201813 |

**NOT FOR
CONSTRUCTION**

PF201