



Books and More...

ST. BERNARD PARISH NEW PUBLIC LIBRARY

3121 E. JUDGE PEREZ DR.
 MERAUX, LOUISIANA 70075



100% CONSTRUCTION DOCUMENTS

12/20/2021

OWNER:

ST. BERNARD PARISH
 DONALD R. BOURGEOIS,
 CAPITAL PROJECT SUPERVISOR
 DBOURGEOIS@SBPG.NET
 504.410.3092

USER

ST. BERNARD PARISH
 PUBLIC LIBRARY CONTROL BOARD
 PATRICE CUSIMANO
 PATRICECUSIMANO60@GMAIL.COM

PROJECT MANAGER

LANDRY MANAGEMENT CONSULTANTS
 DOUG LANDRY
 DDLANDRY@LANDRYMANAGEMENT.COM
 504.579.3334

ARCHITECT

MATHES BRIERRE ARCHITECTS -
 ARCHITECTS BEAZLEY MOLIÈRE
 A JOINT VENTURE
 ALBERT MOLIÈRE
 ALMOLIÈRE@ARCHBM.COM
 337.233.0614

CIVIL ENGINEER

MEYER ENGINEERS, LTD.
 DONOVAN DUFFY, P.E.
 DDUFFY@MEYER-E-L.COM
 504.885.9892

STRUCTURAL ENGINEER

MORPHY MAKOFSKY
 JAMIE L. SAXON P.E.
 J_SAXON@MMI-ENG.COM
 504.488.1317

MECH., ELEC. & PLUMB. ENGINEERS

GVA ENGINEERING, LLC
 LEON PESSES
 LPESSES@GVAENGINEERING.COM
 504.780.9330

LANDSCAPE ARCHITECT

MATHES BRIERRE ARCHITECTS
 KEITH SCARMUZZA
 KSCARMUZZA@MATHESBRIERRE.COM
 504.586.9303

ST. BERNARD PARISH NEW PUBLIC LIBRARY

100% CONSTRUCTION DOCUMENTS

3121 E. JUDGE PEREZ DR.

MERAUX, LOUISIANA 70075

SHEET INDEX

GENERAL SHEETS	ARCHITECTURAL CONT'D
G001 COVER	A150 WALL TYPES
G002 INFORMATION SHEET	A200 DOOR & WINDOW SCHEDULE & TYPES
G003 ADA DIAGRAMS	A210 DOOR DETAILS
G004 LIFE SAFETY	A211 DOOR DETAILS
G005 SITE SURVEY / PRE-SURCHARGE	A220 CURTAIN WALL OPENING ELEVATIONS
G006 SITE SURVEY / PRE-SURCHARGE	A221 CURTAIN WALL OPENING ELEVATIONS
G007 SITE SURVEY - EXISTING POST SURCHARGE	A222 STOREFRONT OPENING ELEVATIONS
A300 HIGH ROOF PLAN	A301 LOW ROOF PLAN
A310 ROOF DETAILS	A311 ROOF DETAILS
A320 EXTERIOR ELEVATIONS	A340 INTERIOR ELEVATIONS
A341 INTERIOR ELEVATIONS	A342 INTERIOR ELEVATIONS
A343 INTERIOR ELEVATIONS	A344 INTERIOR ELEVATIONS
A400 BUILDING SECTIONS	A401 BUILDING SECTIONS
A410 WALL SECTIONS	A411 WALL SECTIONS
A420 ENLARGED SECTION DETAILS	A421 ENLARGED SECTION DETAILS
A422 ENLARGED SECTION DETAILS	A423 ENLARGED SECTION DETAILS
A424 ENLARGED SECTION DETAILS	A425 EXTERIOR PLAN DETAILS
A426 EXTERIOR PLAN DETAILS	A600 FINISH SCHEDULE / LEGEND / INFORMATION
A601 FLOOR FINISH PLAN	A602 CARPET TILE LAYOUT PLAN
A603 FURNITURE & SHELVING PLANS	A604 ENLARGED PARTIAL FLOOR PLAN - AREA B
A605 ENLARGED PARTIAL FLOOR PLAN - AREA C	A606 ENLARGED PARTIAL FLOOR PLAN - AREA D
A610 FINISH / CASEWORK / MILLWORK DETAILS	M201 HVAC DETAILS
M301 HVAC SCHEDULES	
S201 SECTIONS	
S301 SECTIONS	
S302 SECTIONS	
S401 BRACING ELEVATIONS	
S402 BRACING ELEVATIONS	
S403 PERFORATED SCREEN ELEVATIONS	
L100 PLANTING PLAN	
L110 GRADING PLAN	
L120 CUT AND FILL PLAN	
A101 SITE PLAN	
A102 ENLARGED SITE PLANS	
A103 ENLARGED SITE PLANS	
A104 ENLARGED SITE PLANS	
A110 FLOOR PLAN	
A111 FLOOR PLAN - DIMENSIONS	
A120 REFLECTED CEILING PLAN	
A121 CEILING DETAILS	
A122 ENLARGED REFLECTED CEILING PLANS	
A130 ENLARGED PLANS / DETAILS	
A131 ENLARGED PLANS / DETAILS	

CONTACTS

OWNER:

ST. BERNARD PARISH
DONALD R. BOURGEOIS,
CAPITAL PROJECT SUPERVISOR
DBOURGEOIS@SBPG.NET
504.410.3092

USER

ST. BERNARD PARISH
PUBLIC LIBRARY CONTROL BOARD
PATRICE CUSIMANO
PATRICECUSIMANO60@GMAIL.COM
PHONE

PROJECT MANAGER

LANDRY MANAGEMENT CONSULTANTS
DOUG LANDRY
DDLANDRY@LANDRYMANAGEMENT.COM
504.579.3334

ARCHITECT

MATHES BRIERRE ARCHITECTS -
ARCHITECTS BEAZLEY MOLIERE
A JOINT VENTURE
ALBERT MOLIERE
ALMOLIERE@ARCHBM.COM
337.233.0614

CIVIL ENGINEER

MEYER ENGINEERS, LLC
DONOVAN DUFFY, P.E.
DDUFFY@MEYER-E-L.COM
504.885.9892

STRUCTURAL ENGINEER

MORPHY MAKOFSKY
JAMIE L. SAXON P.E.
J_SAXON@MMI-ENG.COM
504.488.1317

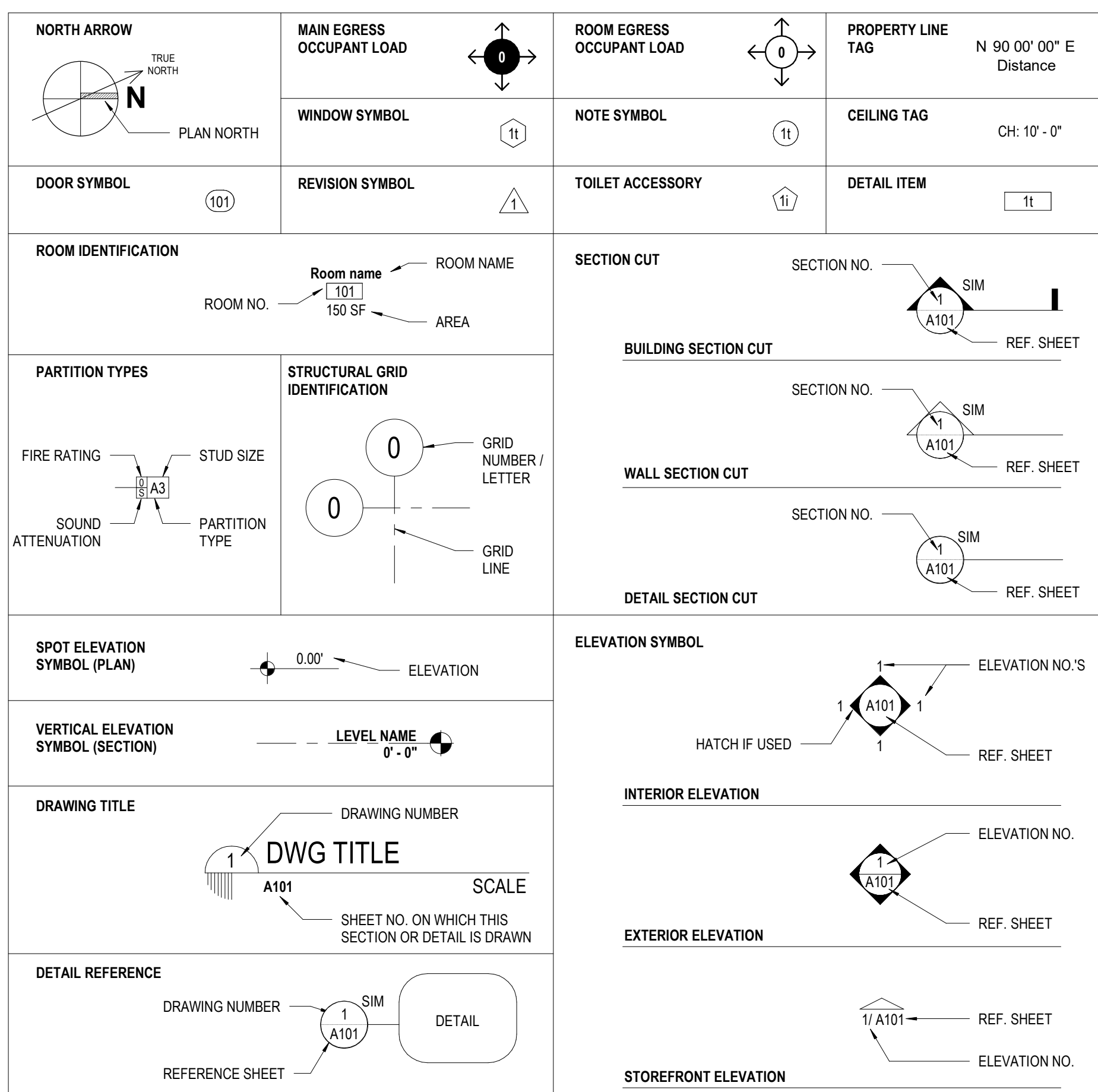
MECH., ELEC. & PLUMB. ENGINEERS

GVA ENGINEERING, LLC
LEON PESSES
LPESSES@GVAENGINEERING.COM
504.780.9330

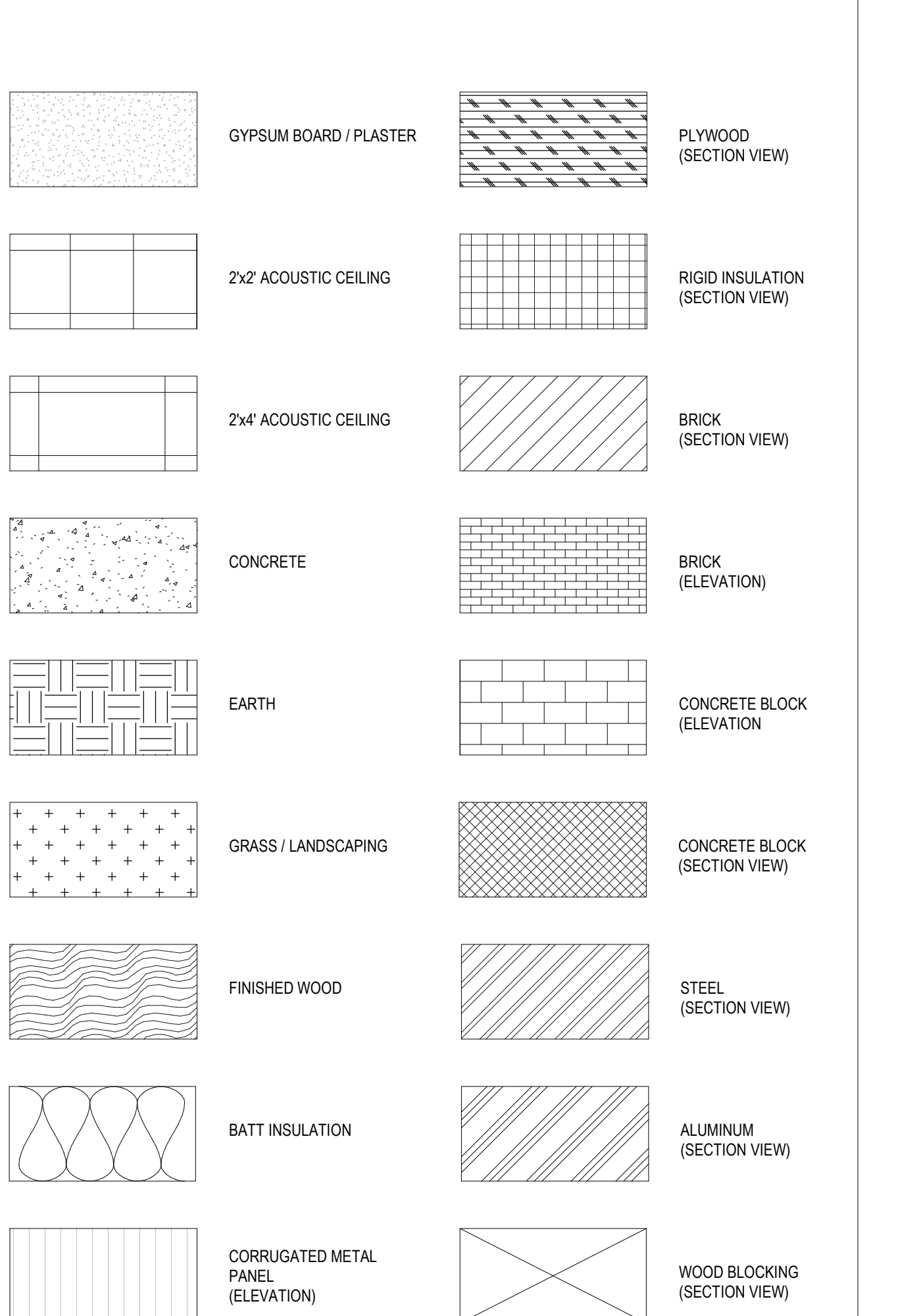
LANDSCAPE ARCHITECT

MATHES BRIERRE ARCHITECT
KEITH SCARMUZZA
KSCARMUZZA@MATHESBRIERRE.COM
504.5869303

GRAPHIC LEGEND



TYPICAL HATCH PATTERNS



ARCHITECTURAL ABBREVIATIONS

AC	AIR CONDITIONING	EXP	EXPANSION	PL	PLATE
ABV	ABOVE	EXT	EXTERIOR	PLAM	PLASTIC LAMINATE
ACOUS	ACOUSTICAL	FD	FLOOR DRAIN	PLAS	PLASTER
ACT	ACUSTICAL CEILING TILE	FEC	FIRE EXTINGUISHER CABINET	PLYWD	PLYWOOD
AD	AREA DRAIN	FHC	FIRE HOSE CABINET	PS	PROTECTION SCREEN
AFF	ABOVE FINISH FLOOR	FIN	FINISHED	PTD	PAINTED
ALT	ALTERNATE	FL	FLOOR	PTN	PARTITION
ALUM	ALUMINUM	FM	FLOOR MAT	R	RISER
ANOD	ANODIZED	FR	FRAME	RIA	RETURN AIR
AP	ACCESS PANEL	FTVM	FUTURE TV MONITOR	RD	ROOF DRAIN
APPR	APPROXIMATE	FURR	FURRED	RE, REF	REFERENCE
AVC	AUDIO VISUAL CONSOLE	FV	FIELD VERIFY	REIN	REINFORCEMENT
BD	BOARD	GA	GAGE/GAUGE	REQD	REQUIRED
BLDG	BUILDING	GALV	GALVANIZED	RM	ROOM
BLKG	BLOCKING	GC	GENERAL CONTRACTOR	RTU	ROOFTOP UNIT
BM	BEAM	GL	GLASS	SCHED	SCHEDULE(D)
BRG	BEARING	GR	GROUND ROD ACCESS BOX	SF	SAND FINISH
BRJ	BRICK RELIEF JOINT	GS	GLAZED CERAMIC TILE	SHLV	SHELVES
BRZ	BRONZE	GWB	GYPSSUM WALL BOARD	SHT	SHEET
BYO	BY OWNER	GYP	GYPSSUM	SIM	SIMILAR
CAB	CABINET	HC	HANDICAP	SK	SINK
CB	CATCH BASIN	HDW	HARDWARE	SM	SMOOTH
CER	CEMENT	HM	HOLLOW METAL	SPEC	SPECIFICATIONS/SPECIFIED
CEM	CERAMIC	HORIZ	HORIZONTAL	SQ	SQUARE
CHBD	CHALKBOARD	HP	HIGH POINT	SS	SERVICE SINK
CJ	CASED JOINT	HT	HEIGHT	ST STL	STAINLESS STEEL
CL	CENTER LINE	ID	INSIDE DIMENSION	STD	STANDARD
CLG	CEILING	INSUL	INSULATION	STL	STEEL
CLO	CLOSET	INT	INTERIOR	STOR	STORAGE
CMU	CONCRETE MASONRY UNIT	INV	INVERT	STRUCT	STRUCTURE/STRUCTURAL
CO	CASED OPENING	JAN	JANITOR	SUSP	SUSPENDED
COL	COLUMN	JT	JOINT	TREAD	TREAD
CONC	CONCRETE	LAM	LAMINATED	TA	TOILET ACCESSORY
CONT	CONTINUOUS	LAV	LAVATORY	TB	TACKBOARD
CONTR	CONTRACTOR	LP	LOW POINT	TC	TOP OF CURB
CR	CARPET	MAX	MAXIMUM	TEMP	TEMPERED
CT	CARPET TILE	MB	MARKER BOARD	THK	THICK
DET	DETAIL	MECH	MECHANICAL	TKBD	TACKBOARD
DF	DRYWALL FURRING	MFRG	MANUFACTURE(R)	TRANS	TRANSPARENT
DIA	DIAMETER	MIN	MINIMUM	TVM	TV MONITOR
DIM	DIMENSION	MIR	MIRROR	TYP	TV PROJECTOR
DN	DOWN	MISC	MISCELLANEOUS	URNL	URN/L
DR	DRYWALL PARTITION	MO	MASONRY OPENING	UN/O	UNLESS NOTED OTHERWISE
DP	DOOR	MOD	MODULE/MODULAR	UNFIN	UNFINISHED
DS	DOWNSPOUT	MONO	MONOLITHIC	UV	UNDERFLOOR VENT
DWG	DRAWING	MS	MASONRY PARTITION	VC	VALUE CABINET
EACH	EACH	MTL	METAL THRESHOLD	VERT	VERTICAL
EAV	ELECTRICAL-AUDIO/VISUAL	MEM	MEMBRANE WATERPROOFING	VIN	VINYL
EDF	ELECTRIC DRINKING FOUNTAIN	NIC	NOT IN CONTRACT	VP	VISION PANEL
EJ	EXPANSION JOINT	NTS	NOT TO SCALE	WI	WITH
ELEV	ELEVATION	OC	ON TOP OF CURB	W/O	WITHOUT
ELEC	ELECTRICAL	OV	ON TOP OF OVER	WC	WATER CLOSET
ELEV	ELEVATOR OR ELEVATION	OC	ON CENTER	WD	WOOD
EP	ELECTRICAL PANEL	OD	OUTSIDE DIAMETER	WDW	WINDOW
EQ	EQUAL	OPNG	OPENING	WOJ	WORK OUT ON JOB
EQUIP	EQUIPMENT	OPP	OPPOSITE	WP	WATERPROOFING
EXIST	EXISTING	OV	OVERHEAD	WWF	WELDED WIRE FABRIC

PROJECT DESCRIPTION

THIS PROJECT CONSISTS OF A SINGLE STORY 26,230 SF LIBRARY FACILITY WITH A FINISH FLOOR HEIGHT OF +2'-0" (NAV) TO SERVE AS THE KNOWLEDGE CENTER AND INFORMATION REPOSITORY HUB FOR TECH PARISHIONERS OF ST. BERNARD PARISH. THIS FACILITY WILL REPLACE SEVERAL SMALLER FUNCTIONING LIBRARIES IN THE AREA.

THE FACILITY IS ORIENTED ON THE SITE TO PROMOTE NATURAL DAYLIGHT. LARGE GLAZED WALLS TAKE FULL ADVANTAGE OF INDIRECT NORTHERN SUNLIGHT. AMPLE PATRON PARKING IS PROVIDED WITH A SEPARATE DRIVE FOR THE AFTER HOURS BOOK DROP AND SEPARATE EMPLOYEE PARKING.

THE NEW PARISH LIBRARY FACILITY WILL HOUSE ALL THE CURRENT PARISH LIBRARY COLLECTIONS. AS WELL AS PROVIDE SEVERAL LARGE AND SMALL MEETING AREAS FOR PARISHIONERS. IN ADDITION TO THE LARGE MEETING ROOM ABLE TO SEAT 120+, A SEPARATE MULTI-PURPOSE AREA WILL BE AVAILABLE FOR VARIOUS FUNCTIONS AND ACTIVITIES. BOTH OF THESE AREAS ARE INTENDED TO BE AVAILABLE FOR AFTER HOURS USAGE.

THE LIBRARY WILL INCLUDE A CHILDREN'S COLLECTION SECTION WITH A DEDICATED CHILD PROGRAMMING ROOM TO BE USED FOR THE VARIOUS CHILDREN ORIENTED ACTIVITIES AND SERVICES, AND SEPARATE TEEN AND ADULT SECTIONS WITH BOTH INDIVIDUAL AND GROUP STUDY ROOMS.

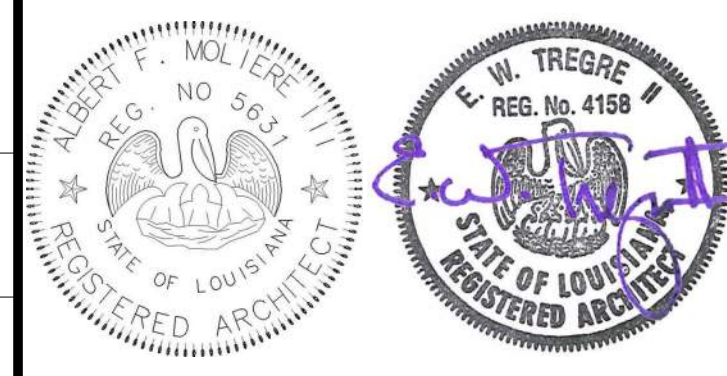
COORDINATION NOTES

- IN THE EVENT A CONSTRUCTION DRAWING CONTAINS AN ITEM OR ITEMS REFERENCING ANOTHER DISCIPLINE'S DRAWINGS, SUCH AS "REFER TO STRUCTURAL" OR "SEE CIVIL", THE CONTRACTOR SHALL HAVE ALLOWED FOR THE PROVISION OF THAT ITEM WHETHER SHOWN OR INDICATED IN THE OTHER DISCIPLINE OR NOT.
 - A. THIS SHALL APPLY BOTH TO ARCHITECTURAL DRAWINGS REFERENCING OTHER DISCIPLINES (LANDSCAPE, CIVIL, STRUCTURAL, MECHANICAL, PLUMBING, ELECTRICAL, ETC.) AND DRAWINGS OF OTHER DISCIPLINES REFERRING ARCHITECTURAL DRAWINGS.
 - B. IN THE EVENT THE ITEM REFERENCING OTHER DISCIPLINES IS DRAWN BUT NOT SPECIFICALLY NOTED THERE OR ELSEWHERE, THE CONTRACTOR SHALL MAKE PROVISIONS OF THE ITEM BASED ON THE DRAWING INFORMATION AND DIMENSION TO SCALE, BUT ONLY TO THE EXTENT OTHER SPECIFIC INFORMATION IS NOT PROVIDED. ARCHITECTURAL DRAWINGS MAY SHOW MISCELLANEOUS STEEL USED FOR ARCHITECTURAL PURPOSES AND ARE NOT NECESSARILY SHOWN ON STRUCTURAL DRAWINGS.
- ALL ACCOMMODATIONS IN ADJACENT AND ACCESSORY WORK SHALL BE MADE TO PROVIDE FOR A COMPLETE INSTALLATION OF THE ITEM.
- IN CASE OF ANY DISCREPANCY WITH WORK OF OTHER DISCIPLINES, OR ONE DISCIPLINE TO ANOTHER, OR WITHIN THE WORK OF ANY DISCIPLINE, THE GREATER QUALITY OR QUANTITY OF WORK SHALL BE PROVIDED.

GENERAL NOTES

- ALL ELEVATIONS INDICATED ON THE CONSTRUCTION DRAWINGS ARE BASED UPON 100'-0" = 27.83' CAIRO DATUM.
- DIMENSIONS ON THE DRAWINGS ARE FROM FACE OF STUD, UNLESS OTHERWISE NOTED.
- THE CONTRACTOR SHALL VERIFY ALL EXISTING CONDITIONS IN THE FIELD PRIOR TO COMMENCING WORK. DO NOT SCALE THE DRAWINGS FOR DIMENSIONS. CONTRACTOR SHOULD TAKE DIGITAL PHOTOS OF ALL EXISTING CONDITIONS (BUILDINGS, METAL WALL PANELS, PIPE RACK, STREETS, CURBS, PAVING, DRIVEWAYS, SIDEWALKS, FENCE, GATES, TREES, ETC.) ANY DAMAGED EXISTING CONDITIONS TO REMAIN WILL REQUIRE WHOLESALE REPLACEMENT.
- THE CONTRACTOR SHALL COORDINATE ALL WORK PROCEDURES WITH THE REQUIREMENTS OF THE OWNER AND THE OWNER'S SEPARATE CONTRACTORS, IF ANY.
- THE CONTRACTOR SHALL BE RESPONSIBLE FOR THE PROTECTION OF ALL CONDITIONS AND MATERIALS WITHIN THE PROPOSED CONSTRUCTION AREA. THE CONTRACTOR SHALL HAVE SOLE RESPONSIBILITY FOR ANY DAMAGE OR INJURIES CAUSED BY OR DURING THE EXECUTION OF THE WORK.
- MEANS OF EGRESS: ALL MEANS OF EGRESS SHALL BE MAINTAINED CLEAR AND FREE OF ALL OBSTRUCTIONS, SUCH AS BUILDING MATERIALS, TOOLS, DEBRIS, ETC.
- ALL BUILDING MATERIALS STORED AT THE CONSTRUCTION SITE, AND/OR IN ANY AREA OF THE BUILDING ARE TO BE SECURED IN A LOCKED AREA, AND BE CLEANED UP AND CLEARED FROM THE BUILDING PERIODICALLY TO AVOID ANY EXCESSIVE ACCUMULATION.
- WHERE PIPES AND CONDUITS, DUCT, ETC. PIERCE FIRE PROTECTION ENCLOSURES REFER TO "FIRESTOPPING" SECTION 0720 IN THE PROJECT.
- EXIT DOORS SHALL BE READY OPERABLE AT ALL TIMES FROM THE SIDE FROM WHICH EGRESS IS TO BE MADE.

KEY PLAN



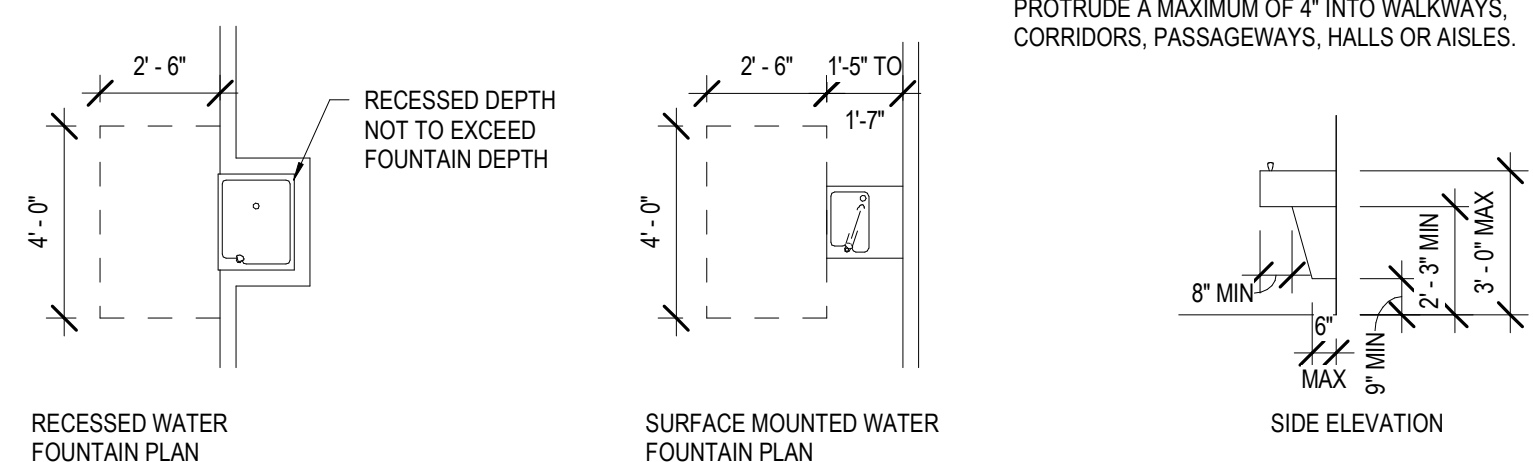
Mathes Brierre + ARCHITECTS BEAZLEY MOLIERE
A JOINT VENTURE
201 St. Charles Avenue, Forty First Floor
New Orleans, Louisiana 70170-4100
Voice: 504.586.9303 Fax: 504.582.1305
300 Heymann Blvd.
Lafayette, Louisiana 70503
337.233.0614

PROJECT TITLE

ST. BERNARD PARISH PUBLIC LIBRARY
ST. BERNARD PARISH

DESIGNED BY		MBA/ABM	CHECKED BY	PP
DRAWN BY		AB/CF/MP/SC/RZ	DATE	12.20.2021
PROJECT NO.		MBA - 11884	SHEET NO.	
		ABM - 201813	G002	

DRINKING FOUNTAINS



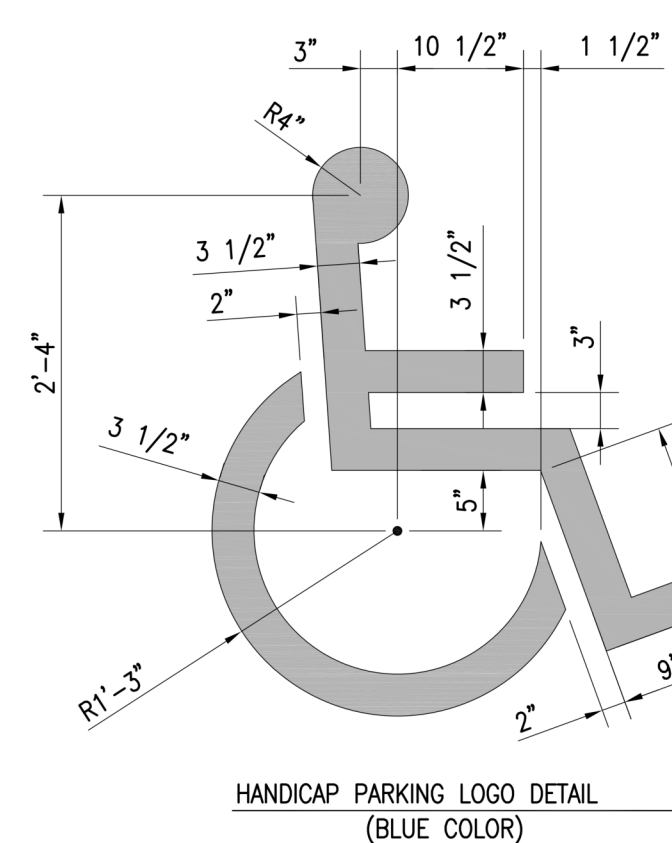
NOTE: IF MOUNTED MORE THAN 27" AFF, THE LEADING EDGE OF THE DRINKING FOUNTAIN CAN PROTRUDE A MAXIMUM OF 4" INTO WALKWAYS, CORRIDORS, PASSAGEWAYS, HALLS OR AISLES.

SEE SECTION 4.13 (1) AND 4.15 OF THE ADA ACCESSIBILITY GUIDELINES FOR ADDITIONAL INFORMATION ON DRINKING FOUNTAINS

NOTES

1. INFORMATION SHOWN ON THIS SHEET IS THE MINIMUM REQUIRED FOR ADA COMPLIANCE.
2. DIMENSIONS INDICATED ARE THE MINIMUM CLEAR DIMENSIONS REQUIRED BY THE ADA ACCESSIBILITY GUIDELINES. THE CONTRACTOR IS RESPONSIBLE FOR LAYOUT OF BUILDING ELEMENTS TO ASSURE THAT DIMENSIONS SHOWN ARE PROVIDED.
3. NOTIFY ARCHITECT IMMEDIATELY OF ANY DISCREPANCIES BETWEEN THE ARCHITECTURAL DRAWINGS AND THE INFORMATION GIVEN ON THIS SHEET.
4. DO NOT SCALE THESE DRAWINGS.
5. REFER TO FEDERAL PUBLICATION "AMERICANS WITH DISABILITIES ACT TITLE III: PUBLIC ACCOMMODATIONS" (LATEST EDITION) AND PROJECT LOCAL GOVERNING REGULATIONS FOR COMPLETE PROJECT ACCESSIBILITY REQUIREMENTS.
6. INFORMATION SHOWN ON THIS SHEET IS PROVIDED TO THE CONTRACTOR, TO COORDINATE AND VERIFY ITEMS AND CONDITIONS INDICATED IN THE CONSTRUCTION DOCUMENTS, WITH ADA COMPLIANCE.
7. ALL CONDITIONS SHOWN ON THIS SHEET MAY NOT NECESSARILY APPLY TO THIS PROJECT.

HANDICAP PARKING SYMBOLS AND SIGNAGE



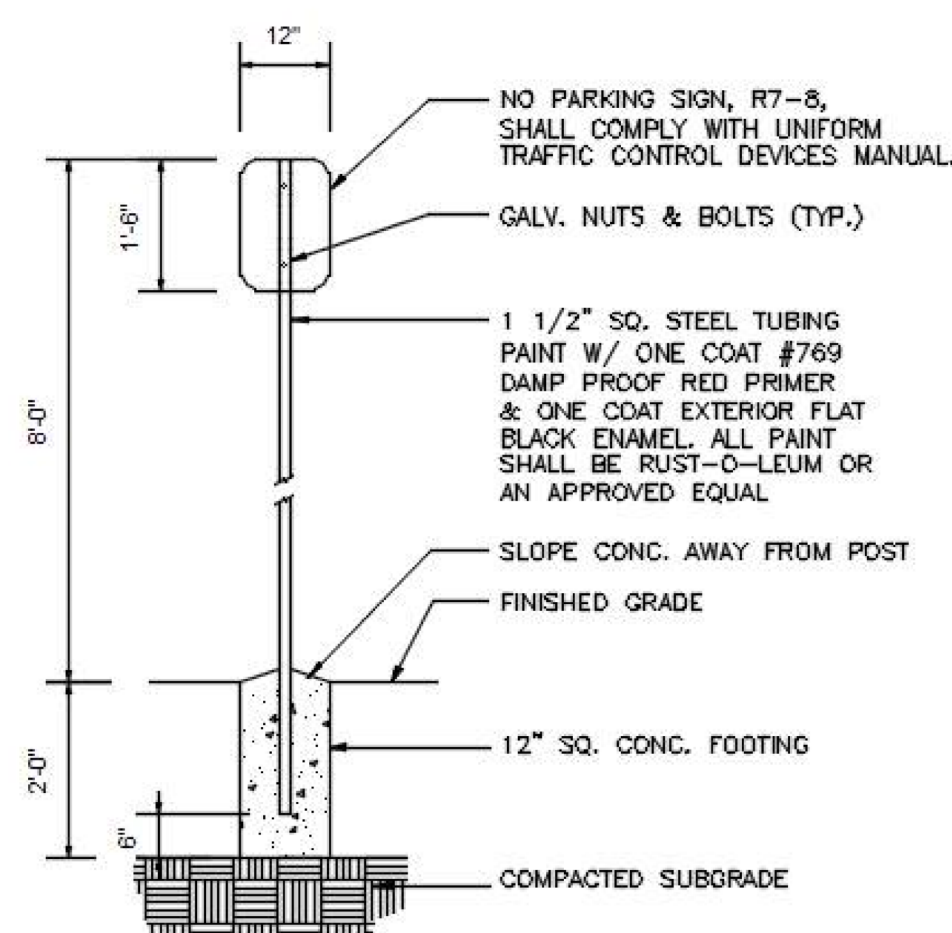
SIGN:



12"x18"
* SINGLE AND/OR DOUBLE HEADED ARROWS MAY BE USED TO MARK MULTIPLE RESERVED PARKING SPACES. ARROW SHOULD BE OMITTED WHEN SIGN IS TO BE USED TO MARK A SINGLE SPACE.

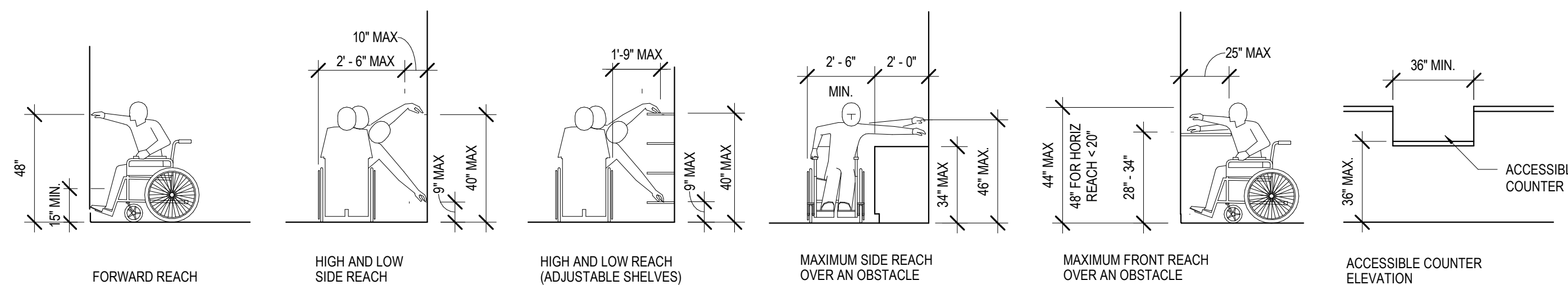
NOTE: MOUNTING HEIGHT FOR SIGNS S-1 & S-2 SHOULD BE 7" FROM TOP OF GROUND TO BOTTOM OF SIGN.
12"x18"
12"x10"
LEGEND AND BORDER: GREEN
BACKGROUND: WHITE
WHITE SYMBOL ON BLUE BACKGROUND

NOTE: GENERAL PLACEMENT OF SIGN SHALL BE APPROX. 4 FT CLEAR OF CURB/STREET LINE FOR STOP AND CROSSING SIGNS UNLESS SPECIFIED OTHERWISE.

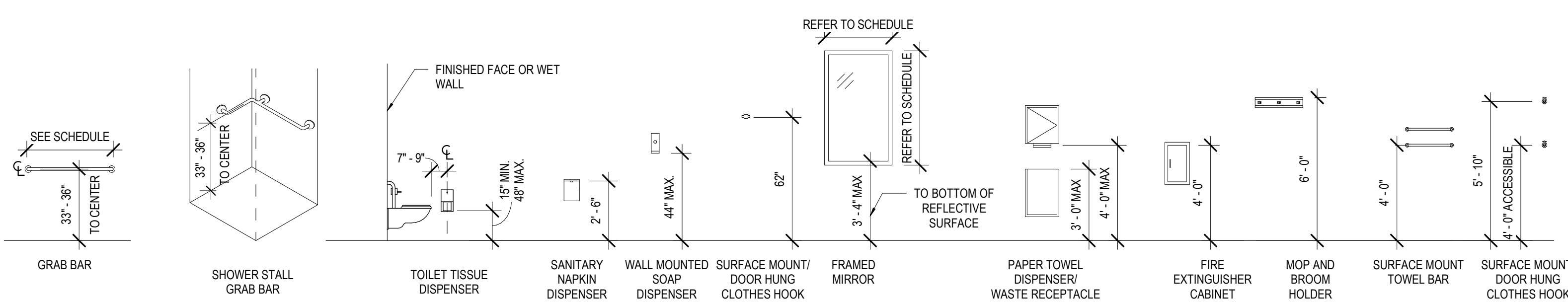


REACH LIMITATIONS ELEVATIONS

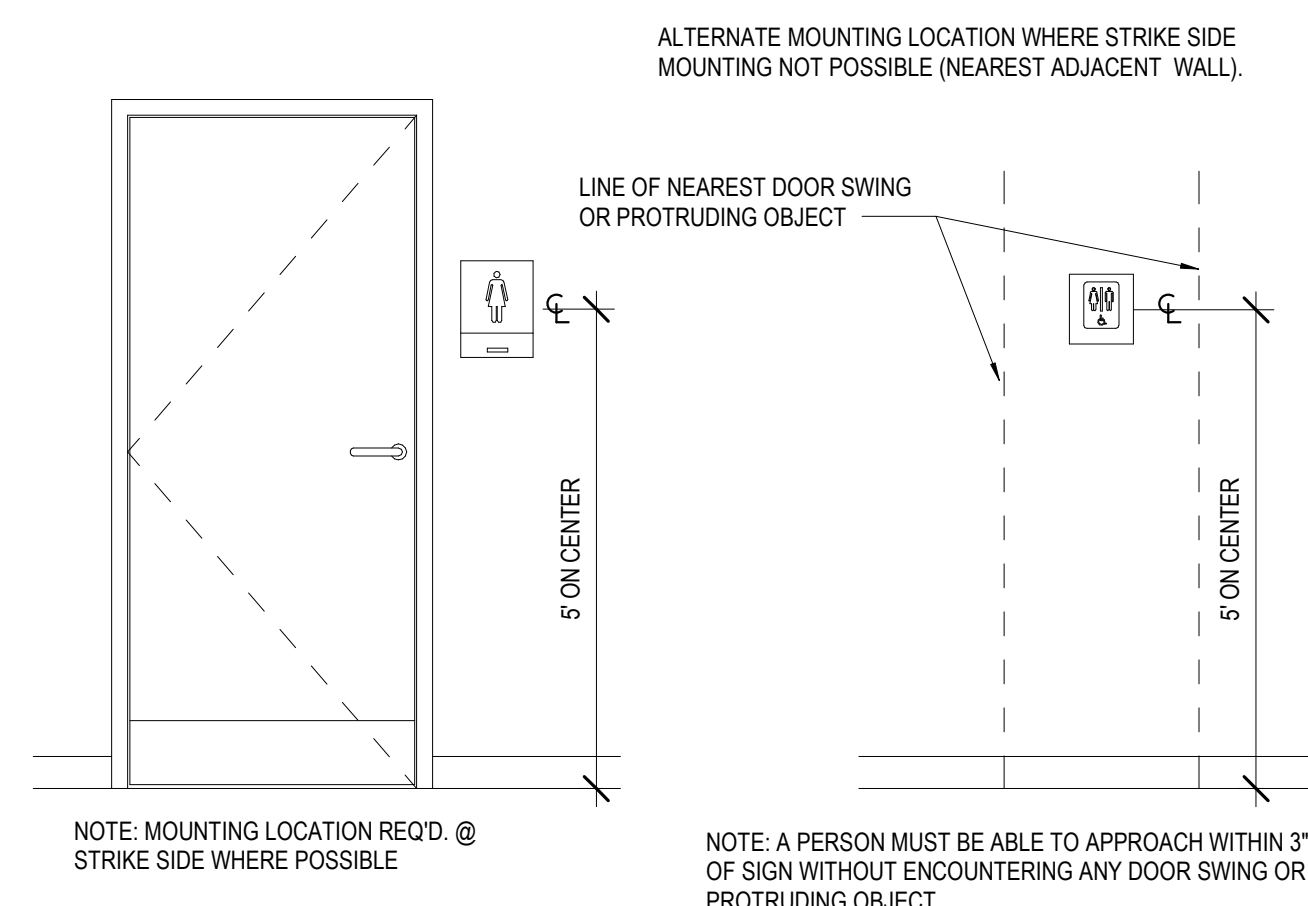
SEE SECTIONS 4.2, 4.3, 4.4 AND 4.5 OF THE A.D.A. ACCESSIBILITY GUIDELINES FOR ADDITIONAL INFORMATION: PASSAGE WIDTHS, SPACE REQUIREMENTS, CLEARANCES, REACH, AND PROTRUSIONS



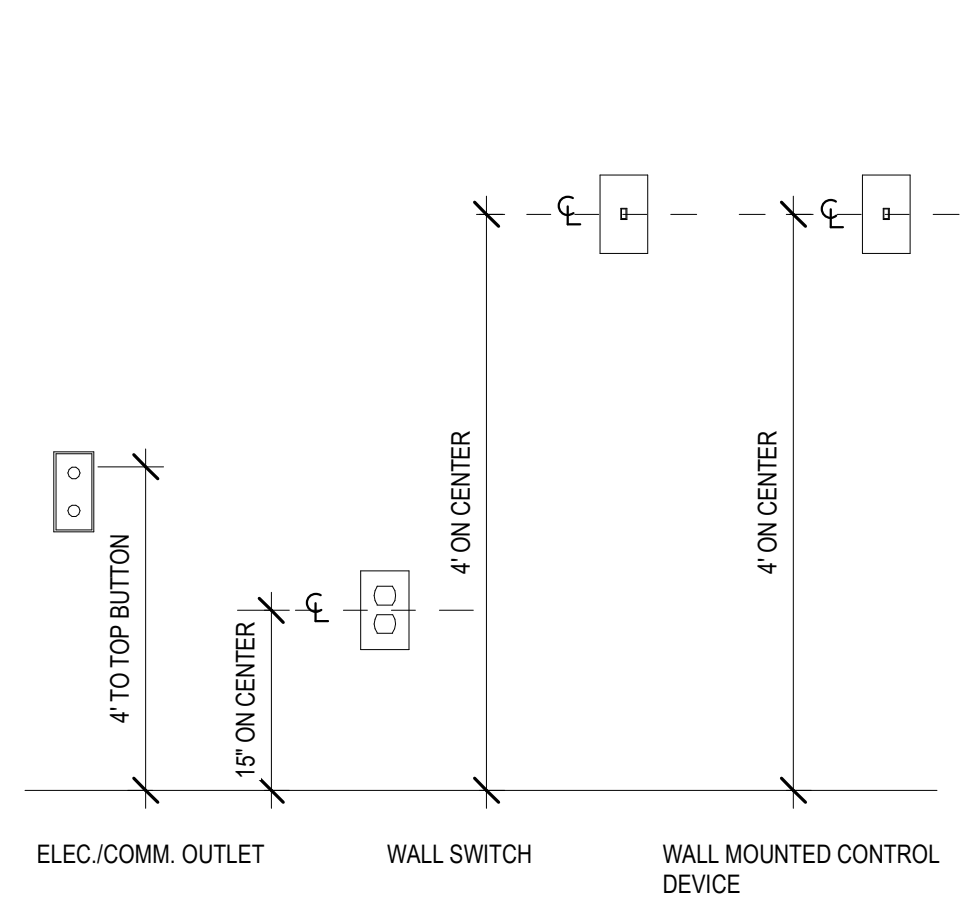
FIXTURE AND ACCESSORIES MOUNTING HEIGHTS



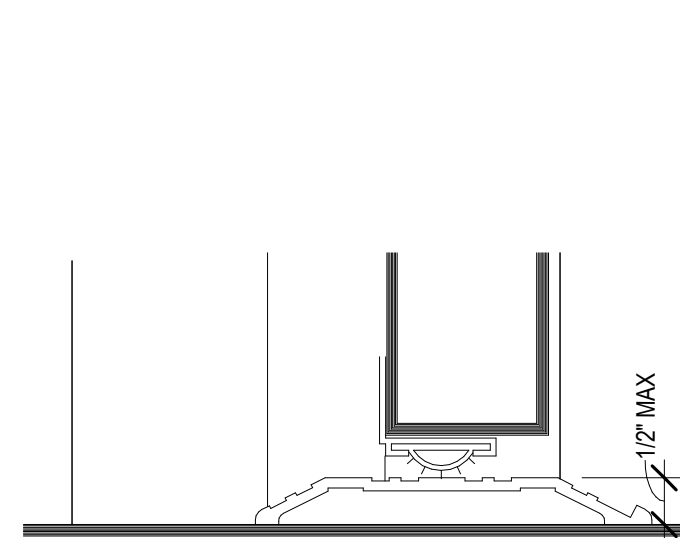
DOOR SIGNAGE (HEIGHT & LOCATION)



ELECTRICAL FIXTURES

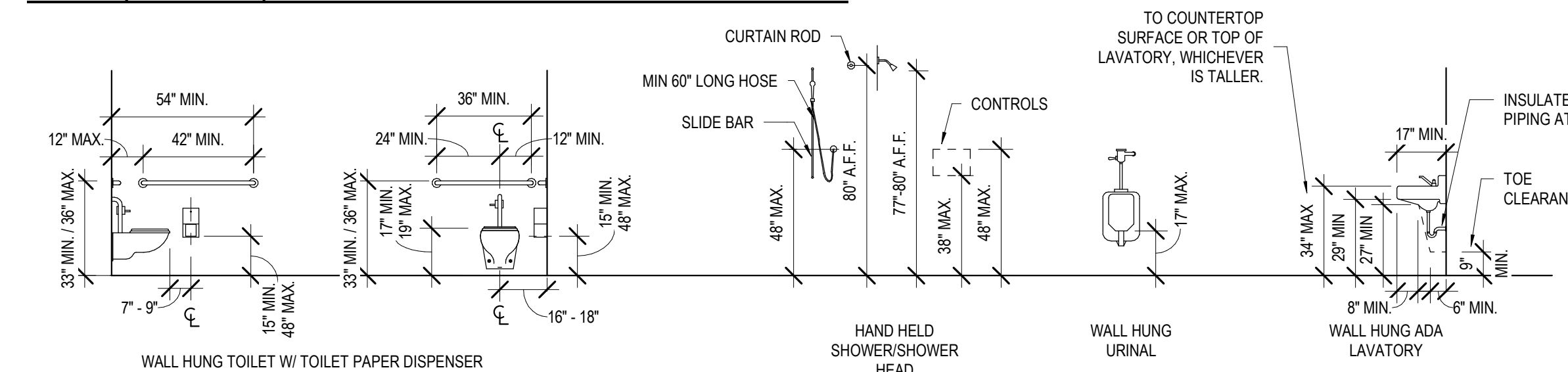


DOOR THRESHOLD DETAIL



SEE DOOR SCHEDULE FOR THRESHOLD INFO AND DETAILS USED IN THIS PROJECT
SEE SECTION 4.13 OF THE ADA ACCESSIBILITY GUIDELINES FOR ADDITIONAL INFORMATION ON DOORS

TOILET, SHOWER, URINAL & LAVATORY MOUNTING HEIGHTS



ADA DIAGRAMS

No.	Description	Date

KEY PLAN



Mathes Brierre + /BM ARCHITECTS ARCHITECTS BEAZLEY MOLIÈRE A JOINT VENTURE
201 St. Charles Avenue, Forty First Floor
New Orleans, Louisiana 70170-4100
Voice: 504.586.9303 Fax: 504.582.1305
300 Heymann Blvd.
Lafayette, Louisiana 70503
337.233.0614

PROJECT TITLE

ST. BERNARD PARISH PUBLIC LIBRARY

ST. BERNARD PARISH

100% CONSTRUCTION DOCUMENTS

DESIGNED BY	MBA/ABM	CHECKED BY	AM/PP
DRAWN BY	CF/RZ	DATE	12.20.2021
SHEET TITLE ADA DIAGRAMS			
PROJECT NO.	MBA - 11884	SHEET NO.	G003
	ABM - 201813		

OCCUPANT LOAD SCHEDULE									
OCC. LOAD CALCS USING NFPA INDIVIDUAL SPACES					OCC. LOAD CALCS USING IBC INDIVIDUAL SPACES				
Number	Name	Area	NFPA OCCUPANCY TYPE	NFPA OCC. LOAD FACTOR	NFPA OCC. LOAD	IBC OCCUPANCY TYPE	IBC OCC. LOAD FACTOR	IBC OCC. LOAD	ADDL. OCC.
101	LOBBY	1459 SF	LIBRARY - READING AREA	50 SF	30	LIBRARY - READING AREA	50 SF	30	
102	CORRIDOR 1	102 SF	UNOCCUPIED AREA	0 SF		UNOCCUPIED AREA	0 SF		
103	FAMILY RR	15 SF	UNOCCUPIED AREA	0 SF		UNOCCUPIED AREA	0 SF		
104	MENS	203 SF	UNOCCUPIED AREA	0 SF		UNOCCUPIED AREA	0 SF		
105	HVAC 1A	30 SF	UNOCCUPIED AREA	0 SF		ACCESSORY STORAGE, M. E	300 SF	1	
106	JAN	52 SF	UNOCCUPIED AREA	0 SF		UNOCCUPIED AREA	0 SF		
107	WOMENS	228 SF	UNOCCUPIED AREA	0 SF		UNOCCUPIED AREA	0 SF		
108	KITCHENETTE	130 SF	ASSEMBLY - CONCENTRATED	7 SF	19	ASSEMBLY - CONCENTRATED	7 SF	19	
109	MEETING ROOM	1039 SF	ASSEMBLY - CONCENTRATED	7 SF	220	ASSEMBLY - CONCENTRATED	7 SF	220	
110	HVAC 1	255 SF	UNOCCUPIED AREA	0 SF		ACCESSORY STORAGE, M. E	300 SF	1	
111	MEETING STORAGE	212 SF	STORAGE	500 SF	1	ACCESSORY STORAGE, M. E	300 SF	1	
112	BOARD / CONFERENCE ROOM	347 SF	ASSEMBLY - UNCONCENTRATED	15 SF	24	ASSEMBLY - UNCONCENTRATED	15 SF	24	
113	MULTI PURPOSE ROOM	1139 SF	ASSEMBLY - UNCONCENTRATED	15 SF	76	ASSEMBLY - UNCONCENTRATED	15 SF	76	
114	AV & ELEC. CLOSET	91 SF	UNOCCUPIED AREA	0 SF		ACCESSORY STORAGE, M. E	300 SF	1	
115	EXHIBIT, NEW BOOKS, ADULT AV, SEATING	2742 SF	LIBRARY - READING AREA	50 SF	55	LIBRARY - READING AREA	50 SF	55	
116	STAFF WORKROOM	1833 SF	BUSINESS	100 SF	19	BUSINESS	100 SF	19	
117	DATA	209 SF	UNOCCUPIED AREA	0 SF		ACCESSORY STORAGE, M. E	300 SF	1	
118	SUPPORT STORAGE	293 SF	STORAGE	500 SF	1	ACCESSORY STORAGE, M. E	300 SF	1	
119	STAFF RR 2	97 SF	UNOCCUPIED AREA	0 SF		UNOCCUPIED AREA	0 SF		
120	STAFF RR 1	51 SF	UNOCCUPIED AREA	0 SF		UNOCCUPIED AREA	0 SF		
121	STAFF LOUNGE	261 SF	ASSEMBLY - UNCONCENTRATED	15 SF	18	ASSEMBLY - UNCONCENTRATED	15 SF	18	
122	CHILD PROG. STORAGE	522 SF	STORAGE	500 SF	2	ACCESSORY STORAGE, M. E	300 SF	2	
123	DIRECTOR	197 SF	BUSINESS	100 SF	2	BUSINESS	100 SF	2	
124	DVD FILES	139 SF	LIBRARY - READING AREA	50 SF	3	LIBRARY - READING AREA	50 SF	3	

OCCUPANT LOAD SCHEDULE									
OCC. LOAD CALCS USING NFPA INDIVIDUAL SPACES					OCC. LOAD CALCS USING IBC INDIVIDUAL SPACES				
Number	Name	Area	NFPA OCCUPANCY TYPE	NFPA OCC. LOAD FACTOR	NFPA OCC. LOAD	IBC OCCUPANCY TYPE	IBC OCC. LOAD FACTOR	IBC OCC. LOAD	ADDL. OCC.
125	CHILDRENS AREA	3326 SF	LIBRARY - STACK AREA	100 SF	34	LIBRARY - STACK AREA	100 SF	34	
126	CHILDRENS PROGRAM	625 SF	LIBRARY - READING AREA	50 SF	13	LIBRARY - READING AREA	50 SF	13	
127	HVAC 3	208 SF	UNOCCUPIED AREA	0 SF		ACCESSORY STORAGE, M. E	300 SF	1	
128	ELECTRICAL	91 SF	UNOCCUPIED AREA	0 SF		ACCESSORY STORAGE, M. E	300 SF	1	
129	FAMILY RR	92 SF	UNOCCUPIED AREA	0 SF		UNOCCUPIED AREA	0 SF		
130	FAMILY RR	92 SF	UNOCCUPIED AREA	0 SF		UNOCCUPIED AREA	0 SF		
131	LACTATION	95 SF	BUSINESS	100 SF	1	BUSINESS	100 SF	1	
132	QUIET READING / SPECIAL COLLECTIONS	408 SF	LIBRARY - READING AREA	50 SF	9	LIBRARY - READING AREA	50 SF	9	
133	COLLECTION & SEATING	3553 SF	LIBRARY - STACK AREA	100 SF	36	LIBRARY - STACK AREA	100 SF	36	
134	GROUP STUDY / SOUND ROOM	151 SF	LIBRARY - READING AREA	50 SF	4	LIBRARY - READING AREA	50 SF	4	2
135	STUDY 5	112 SF	LIBRARY - READING AREA	50 SF	3	LIBRARY - READING AREA	50 SF	3	1
136	STUDY 4	113 SF	LIBRARY - READING AREA	50 SF	3	LIBRARY - READING AREA	50 SF	3	1
137	STUDY 3	113 SF	LIBRARY - READING AREA	50 SF	3	LIBRARY - READING AREA	50 SF	3	1
138	HVAC 2	216 SF	UNOCCUPIED AREA	0 SF		ACCESSORY STORAGE, M. E	300 SF	1	
139	ELEC. CLOSET	69 SF	UNOCCUPIED AREA	0 SF		ACCESSORY STORAGE, M. E	300 SF	1	
140	TEEN AREA	1062 SF	LIBRARY - READING AREA	50 SF	22	LIBRARY - READING AREA	50 SF	22	
141	COMPUTER LAB	586 SF	LIBRARY - READING AREA	50 SF	12	LIBRARY - READING AREA	50 SF	12	
142	STUDY 2	34 SF	LIBRARY - READING AREA	50 SF	1	LIBRARY - READING AREA	50 SF	1	
143	STUDY 1	35 SF	LIBRARY - READING AREA	50 SF	1	LIBRARY - READING AREA	50 SF	1	
144	DVD STACKS	1265 SF	LIBRARY - STACK AREA	100 SF	13	LIBRARY - STACK AREA	100 SF	13	
145	COVERED PORCH	281 SF	UNOCCUPIED AREA	0 SF		UNOCCUPIED AREA	0 SF		
TOTAL OCCUPANTS					629		637	5	

LIFE SAFETY PLAN GRAPHIC LEGEND

■■■■■ 1 HR. RATED WALL
 ■■■■■ 1 HR. RATED WALL
 ■■■■■ 1 HR. RATED WALL
 ■■■■■ 1 HR. RATED WALL
 --- COMMON PATH OF TRAVEL
 --- DEAD END CORRIDOR
 --- EXIT SEPARATION DISTANCE
 --- ROOM DIAGONAL
 --- TRAVEL DISTANCE
 --- SMOKE BARRIER / PARTITION

FIRE EXTINGUISHER CABINET
 FIRE EXTINGUISHER (NO CABINET)
 ROOM AREA (EGRESS OCC. LOAD) DOOR TAG
 MAIN EGRESS OCC. LOAD DOOR TAG
 NON RATED DOOR
 RATED DOOR
 LIFE SAFETY EXPRESS DOOR TAG

Room name: 101 LIFE SAFETY PLAN ROOM TAG
 OCC.: Occupancy
 AREA: 1459 SF
 FACTOR: 50 SF
 OCC. LOAD: Occupant Load

Door: 101 LIFE SAFETY EXPRESS DOOR TAG
 EGRESS WIDTH: 7'-1 1/2"

CODE INFORMATION

CONSTRUCTION TYPE: (IBC) II-B Protected (NFPA) II(000)
OCCUPANCY: (IBC) (NFPA) Assembly - Group A-3 Assembly
BUILDING AREA: GROUND FLOOR: 26,200 SF (GROSS) 26,200 SF (COVERED REAR PORCH)
OCCUPANT LOAD: TOTAL OCCUPANT: 640 occ.

PLUMBING FIXTURE COUNT:

WATER CLOSETS:	REQUIRED	PROVIDED
MEN	3 (1125 occ)	6
WOMEN	5 (1650 occ)	7
FAMILY	0	1

LAVATORIES:

MEN	WOMEN	FAMILY
2 (1200 occ)	4	4
2 (1200 occ)	4	1
0	2	1

DRINKING FOUNTAINS: 2 (1500 occ) 2
SERVICE SINKS: 1 1

SPRINKLED: YES (NFPA 13)
FIRE ALARM: YES
FIRE SEPARATION: 1 HR CORRIDOR, 2 HR EXTERIOR WALL
MEANS OF EGRESS:

REQUIRED:	PROVIDED:
GROUND FLR	640 occ.
	N/A

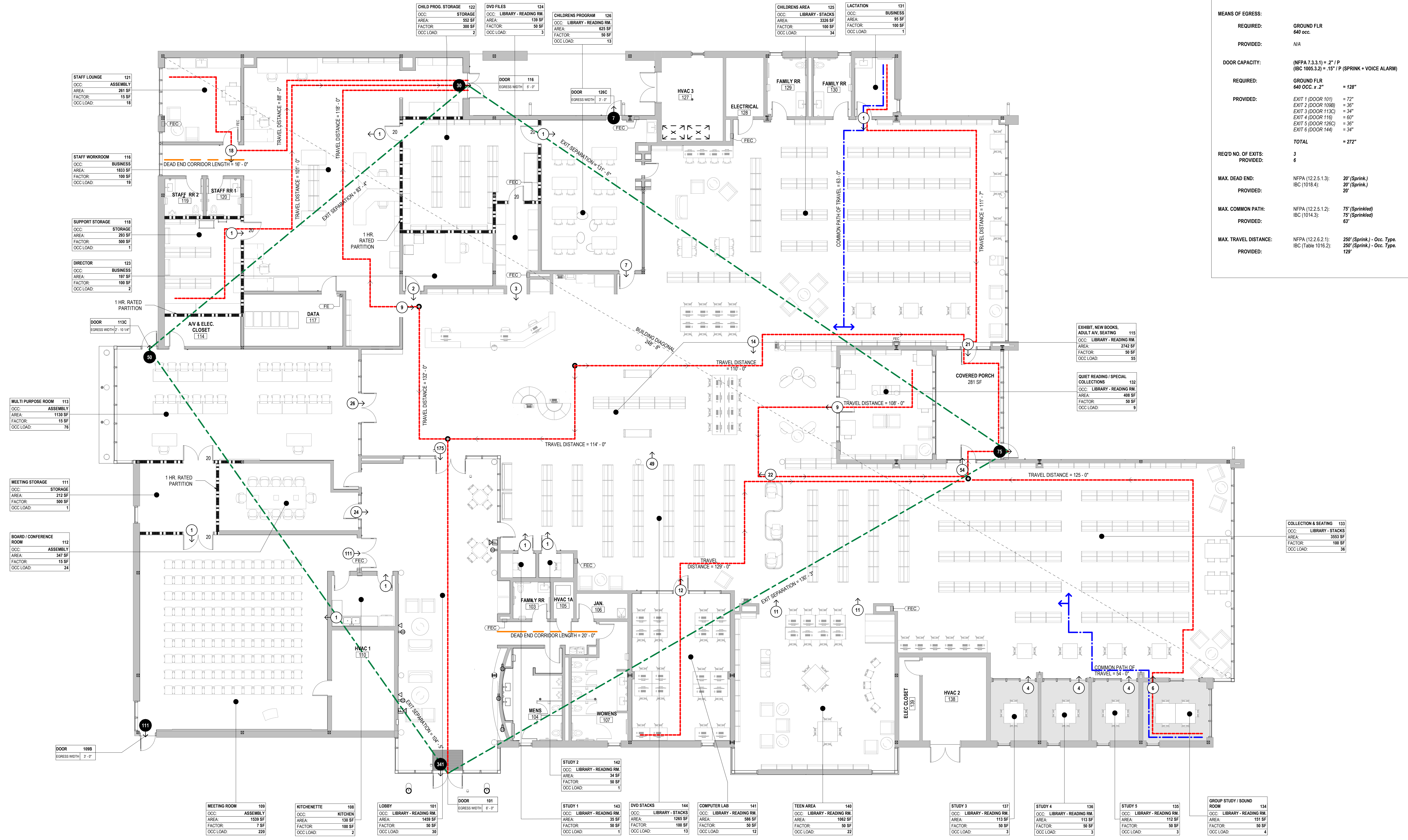
DOOR CAPACITY: (NFPA 7.3.3.1) = 2' / P (IBC 1003.2.2) = 15" / P (SPRINK + VOICE ALARM)
REQUIRED: GROUND FLR 640 OCC. x 2' = 128"
PROVIDED: EXIT 1 (DOOR 101) = 72", EXIT 2 (DOOR 108B) = 36", EXIT 3 (DOOR 113C) = 34", EXIT 4 (DOOR 116) = 60", EXIT 5 (DOOR 126C) = 36", EXIT 6 (DOOR 144) = 34", TOTAL = 272"

REQ'D NO. OF EXITS: 3
PROVIDED: 6

MAX. DEAD END: NFPA (12.2.5.1.3): 20' (Sprink.)
 IBC (1016.4): 20' (Sprink.)
PROVIDED: 20'

MAX. COMMON PATH: NFPA (12.2.5.1.2): 75' (Sprinkled)
 IBC (1014.3): 75' (Sprinkled)
PROVIDED: 65'

MAX. TRAVEL DISTANCE: NFPA (12.2.6.2.1): 250' (Sprink.) - Occ. Type
 IBC (Table 1016.2): 250' (Sprink.) - Occ. Type
PROVIDED: 129'



MATERIALS KEYING/ GENERAL NOTES

No.	Description	Date

KEY PLAN

Mathes Brierre + B/M ARCHITECTS
 ARCHITECTS BEAZLEY MOLIERE
 A JOINT VENTURE
 201 St. Charles Avenue, Forty First Floor
 New Orleans, Louisiana 70170-4100
 Voice: 504-586-9300 Fax: 504-582-1305
 300 Heymann Blvd.
 Lafayette, Louisiana 70503
 337.233.0614

PROJECT TITLE

ST. BERNARD PARISH PUBLIC LIBRARY

ST. BERNARD PARISH

100% CONSTRUCTION DOCUMENTS

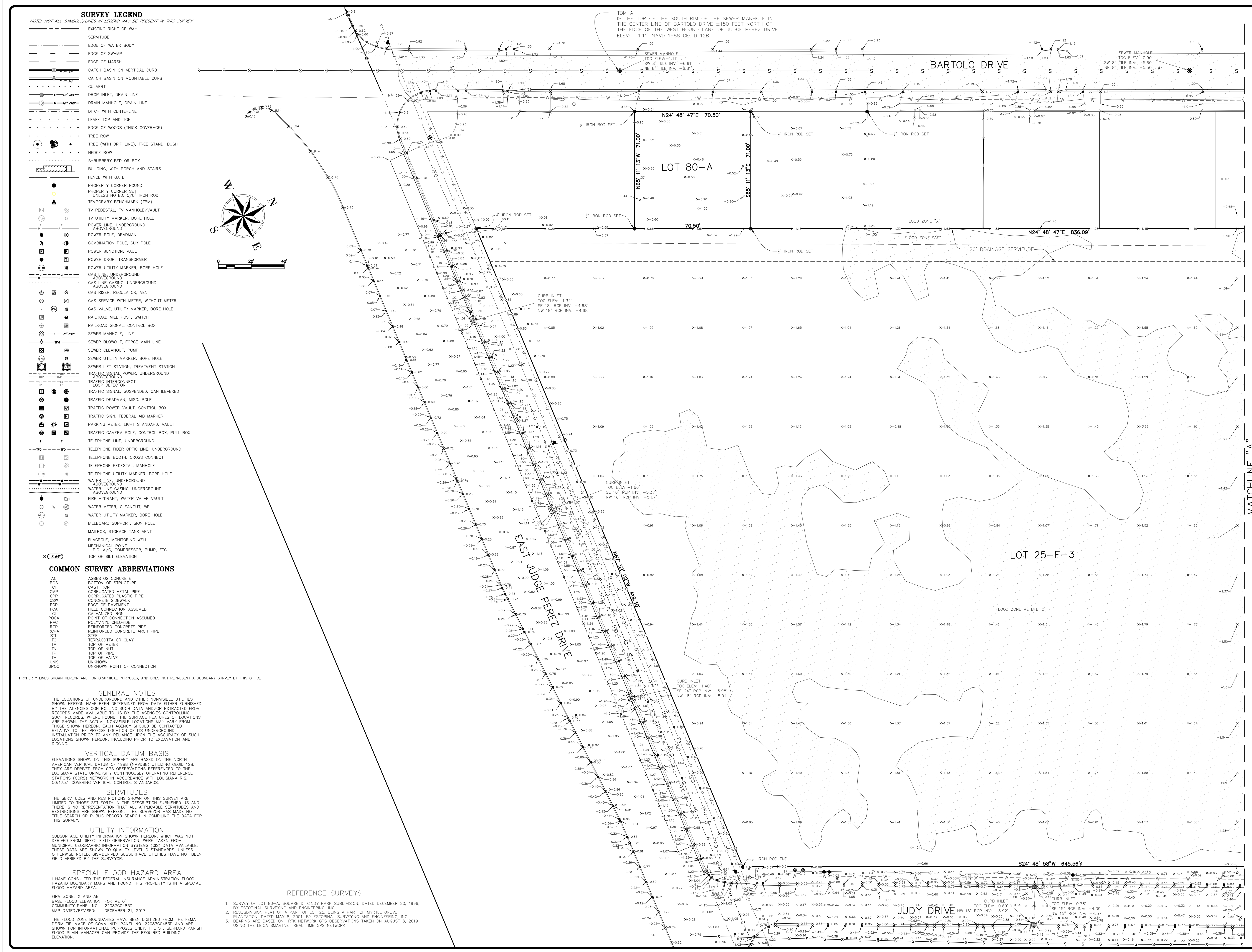
DESIGNED BY	MBA/ABM	CHECKED BY	AM/PP
DRAWN BY	RZ	DATE	12.20.2021

SHEET TITLE

LIFE SAFETY

PROJECT NO.	MBA - 11884	SHEET NO.	G004
	ABM - 201813		

1 LIFE SAFETY FLOOR PLAN
 G004 1/8" = 1'-0"



SURVEY LEGEND

NOTE: NOT ALL SYMBOLS/LINES IN LEGEND MAY BE PRESENT IN THIS SURVEY

- EXISTING RIGHT OF WAY
- SERVITUDE
- EDGE OF WATER BODY
- EDGE OF SWAMP
- EDGE OF MARSH
- CATCH BASIN ON VERTICAL CURB
- CATCH BASIN ON MOUNTABLE CURB
- CULVERT
- DROP INLET, DRAIN LINE
- DRAIN MANHOLE, DRAIN LINE
- DITCH WITH CENTERLINE
- LEVEE TOP AND TOE
- EDGE OF WOODS (THICK COVERAGE)
- TREE ROW
- TREE (WITH DRIP LINE), TREE STAND, BUSH
- HEDGE ROW
- SHRUBBERY BED OR BOX
- BUILDING, WITH PORCH AND STAIRS
- FENCE WITH GATE
- PROPERTY CORNER FOUND
- PROPERTY CORNER SET
- UNLESS NOTED, 3/8" IRON ROD
- TEMPORARY BENCHMARK (TBM)
- TV PEDESTAL, TV MANHOLE/VAULT
- TV UTILITY MARKER, BORE HOLE
- POWER LINE, UNDERGROUND
- POWER POLE, DEADMAN
- COMBINATION POLE, GUY POLE
- POWER JUNCTION, VAULT
- POWER DROP, TRANSFORMER
- POWER UTILITY MARKER, BORE HOLE
- GAS LINE, UNDERGROUND
- GAS LINE CASING, UNDERGROUND
- GAS RISER, REGULATOR, VENT
- GAS SERVICE WITH METER, WITHOUT METER
- GAS VALVE, UTILITY MARKER, BORE HOLE
- RAILROAD MILE POST, SWITCH
- RAILROAD SIGNAL, CONTROL BOX
- SEWER MANHOLE, LINE
- SEWER BLOWOUT, FORCE MAIN LINE
- SEWER CLEANOUT, PUMP
- SEWER UTILITY MARKER, BORE HOLE
- SEWER LIFT STATION, TREATMENT STATION
- TRAFFIC SIGNAL, POWER, UNDERGROUND
- TRAFFIC INTERCONNECT, LOOP DETECTOR
- TRAFFIC SIGNAL, SUSPENDED, CANTILEVERED
- TRAFFIC DEADMAN, MISC. POLE
- TRAFFIC POWER VAULT, CONTROL BOX
- TRAFFIC SIGN, FEDERAL AID MARKER
- PARKING METER, LIGHT STANDARD, VAULT
- TRAFFIC CAMERA POLE, CONTROL BOX, PULL BOX
- TELEPHONE LINE, UNDERGROUND
- TELEPHONE FIBER OPTIC LINE, UNDERGROUND
- TELEPHONE BOOTH, CROSS CONNECT
- TELEPHONE PEDESTAL, MANHOLE
- TELEPHONE UTILITY MARKER, BORE HOLE
- WATER LINE, UNDERGROUND
- WATER LINE CASING, UNDERGROUND
- ABOVEGROUND
- FIRE HYDRANT, WATER VALVE VAULT
- WATER METER, CLEANOUT, WELL
- WATER UTILITY MARKER, BORE HOLE
- BILLBOARD SUPPORT, SIGN POLE
- MAILBOX, STORAGE TANK VENT
- FLAGPOLE, MONITORING WELL
- MECHANICAL POINT
- E.G. A/C COMPRESSOR, PUMP, ETC.
- TOP OF SILT ELEVATION

COMMON SURVEY ABBREVIATIONS

- AC ASBESTOS CONCRETE
- BOS BOTTOM OF STRUCTURE
- CI CAST IRON
- CMP CORRUGATED METAL PIPE
- CPW CORRUGATED PLASTIC PIPE
- CSW CONCRETE SIDEWALK
- ESP EDGE OF PAVEMENT
- FCA FIELD CONNECTION ASSUMED
- POCA POINT OF CONNECTION ASSUMED
- PIC POLYETHYLENE GLYCOL
- RCP REINFORCED CONCRETE PIPE
- RCPA REINFORCED CONCRETE ARCH PIPE
- STL STEEL
- TERRAZZITA OR CLAY
- TM TOP OF METER
- TL TOP OF LAMP
- TP TOP OF PIPE
- TV TOP OF VALVE
- UNK UNKNOWN
- UPDC UNKNOWN POINT OF CONNECTION

PROPERTY LINES SHOWN HEREON ARE FOR GRAPHICAL PURPOSES, AND DOES NOT REPRESENT A BOUNDARY SURVEY BY THIS OFFICE

GENERAL NOTES

THE LOCATIONS OF UNDERGROUND AND OTHER UNVISIBLE UTILITIES SHOWN HEREON HAVE BEEN DETERMINED FROM DATA EITHER FURNISHED BY THE AGENCIES CONTROLLING SUCH DATA AND/OR EXTRACTED FROM RECORDS MADE AVAILABLE TO US BY THE AGENCIES CONTROLLING SUCH RECORDS. WHERE FOUND, THE SURFACE FEATURES OF LOCATIONS ARE SHOWN. THE ACTUAL UNVISIBLE LOCATIONS MAY VARY FROM THOSE SHOWN HEREON. EACH AGENCY SHOULD BE CONTACTED RELATIVE TO THE PRECISE LOCATION OF ITS UNDERGROUND INSTALLATION PRIOR TO ANY RELIANCE UPON THE ACCURACY OF SUCH LOCATIONS SHOWN HEREON, INCLUDING PRIOR TO EXCAVATION AND DIGGING.

VERTICAL DATUM BASIS

ELEVATIONS SHOWN ON THIS SURVEY ARE BASED ON THE NORTH AMERICAN VERTICAL DATUM OF 1988 (NAVD88) UTILIZING GEOID 12B. THEY ARE DERIVED FROM GPS OBSERVATIONS REFERENCED TO THE LOUISIANA STATE UNIVERSITY CONTINUOUSLY OPERATING REFERENCE STATIONS (CORS) NETWORK IN ACCORDANCE WITH LOUISIANA R.S. 50:173.1 COVERING VERTICAL CONTROL STANDARDS.

SERVITUDES

THE SERVITUDES AND RESTRICTIONS SHOWN ON THIS SURVEY ARE LIMITED TO THOSE SET FORTH IN THE DESCRIPTION FURNISHED US AND THERE IS NO REPRESENTATION THAT ALL APPLICABLE SERVITUDES AND RESTRICTIONS ARE SHOWN HEREON. THE SURVEYOR HAS MADE NO TITLE SEARCH OR PUBLIC RECORD SEARCH IN COMPLYING THE DATA FOR THIS SURVEY.

UTILITY INFORMATION

SUBSURFACE UTILITY INFORMATION SHOWN HEREON, WHICH WAS NOT DERIVED FROM DIRECT FIELD OBSERVATION, WERE TAKEN FROM MUNICIPAL GEOGRAPHIC INFORMATION SYSTEMS (GIS) DATA AVAILABLE. THESE DATA ARE SHOWN TO QUALITY LEVEL 3 STANDARDS UNLESS OTHERWISE NOTED. GIS-DERIVED SUBSURFACE UTILITIES HAVE NOT BEEN FIELD VERIFIED BY THE SURVEYOR.

SPECIAL FLOOD HAZARD AREA

I HAVE CONSULTED THE FEDERAL INSURANCE ADMINISTRATION FLOOD HAZARD BOUNDARY MAPS AND FOUND THIS PROPERTY IS IN A SPECIAL FLOOD HAZARD AREA.

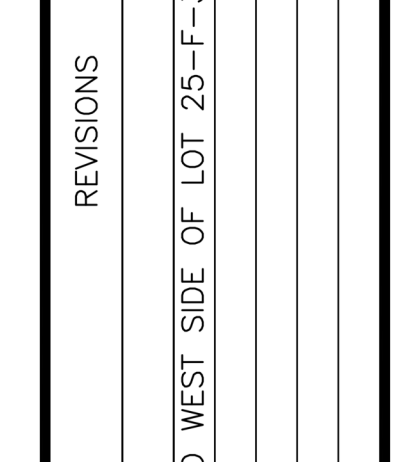
REFERENCE SURVEYS

1. SURVEY OF LOT 80-A, SQUARE D, CHENEY PARK SUBDIVISION, DATED DECEMBER 20, 1996, BY ESTOPAL SURVEYING AND ENGINEERING, INC.
2. RESUBDIVISION PLAT OF A PART OF LOT 25, BEING A PART OF MYRTLE GROVE PLANTATION, DATED MAY 8, 2001, BY ESTOPAL SURVEYING AND ENGINEERING, INC.
3. BEARING ARE BASED ON RTK NETWORK GPS OBSERVATIONS TAKEN ON AUGUST 8, 2019 USING THE LEICA SMARTNET REAL TIME GPS NETWORK.

APP'D	JUST

REVISIONS

DATE	REMARKS
8/11/20	ADDED 20" DRAINAGE SERVITUDE TO WEST SIDE OF LOT 25-F-3



ALL SOUTH CONSULTING ENGINEERS, L.L.C.
 6522 PAPERWORTH AVENUE
 METairie, Louisiana 70002
 (504) 885-2733

NO.	DESCRIPTION	DATE

KEY PLAN



DATE: 08-27-2019	DRAWN BY: AS SHOWN	CHECKED BY: JNS
SCALE: AS SHOWN	JOB NO. 211-015-01	LIST

Mathes Brierre + ARCHITECTS
 ARCHITECTS BEAZLEY MOLIERE
 A JOINT VENTURE
 201 St. Charles Avenue, Forty First Floor
 New Orleans, Louisiana 70170-4100
 Voice: 504.586.9303. Fax: 504.582.1305

ST. BERNARD PARISH PUBLIC LIBRARY
 300 Heymann Blvd.
 Lafayette, Louisiana 70503
 337.233.0614

PROJECT TITLE

ST. BERNARD PARISH PUBLIC LIBRARY
 SECTION 2, T 13 S, R 13 E,
 ST. BERNARD PARISH, LOUISIANA

100% CONSTRUCTION DOCUMENTS

DESIGNED BY: MBA/ABM	CHECKED BY: Checker
DRAWN BY: Author	DATE: 12.20.2021

SHEET TITLE: SITE SURVEY / PRE-SURCHARGE

PROJECT NO. MBA - 11884	SHEET NO. G005
ABM - 201813	

NOTE:
 EXISTING TOPOGRAPHY INFORMATION
 INSIDE OF PROPERTY LINE HAS CHANGED
 DUE TO INSTALLATION OF SURCHARGE.

SURVEY LEGEND
NOTE: NOT ALL SYMBOLS/NOTES IN LEGEND MAY BE PRESENT IN THIS SURVEY

- EXISTING RIGHT OF WAY
- SERVITUDE
- EDGE OF WATER BODY
- EDGE OF SWAMP
- EDGE OF MARSH
- CATCH BASIN ON VERTICAL CURB
- CATCH BASIN ON MOUNTABLE CURB
- CULVERT
- DROP INLET, DRAIN LINE
- DRAIN MANHOLE, DRAIN LINE
- DITCH WITH CENTERLINE
- LEVEE TOP AND TOE
- EDGE OF WOODS (THICK COVERAGE)
- TREE ROW
- TREE (WITH DRIP LINE), TREE STAND, BUSH
- HEDGE ROW
- SHRUBBERY BED OR BOX
- BUILDING, WITH PORCH AND STAIRS
- FENCE WITH GATE
- PROPERTY CORNER FOUND
- PROPERTY CORNER SET UNLESS NOTED, 5/8" IRON ROD
- TEMPORARY BENCHMARK (TBM)
- TV PEDestal, TV MANHOLE/VAULT
- TV UTILITY MARKER, BORE HOLE
- POWER LINE, UNDERGROUND ABOVEGROUND
- POWER POLE, DEADMAN
- COMBINATION POLE, GUY POLE
- POWER JUNCTION, VAULT
- POWER DROP, TRANSFORMER
- POWER UTILITY MARKER, BORE HOLE
- GAS LINE, UNDERGROUND ABOVEGROUND
- GAS LINE CASING, UNDERGROUND ABOVEGROUND
- GAS RISER, REGULATOR, VENT
- GAS SERVICE WITH METER, WITHOUT METER
- GAS VALVE, UTILITY MARKER, BORE HOLE
- RAILROAD MILE POST, SWITCH
- RAILROAD SIGNAL, CONTROL BOX
- SEWER MANHOLE, LINE
- SEWER BLOWOUT, FORCE MAIN LINE
- SEWER CLEANOUT, PUMP
- SEWER UTILITY MARKER, BORE HOLE
- SEWER LIFT STATION, TREATMENT STATION
- TRAFFIC SIGNAL, POWER, UNDERGROUND ABOVEGROUND
- TRAFFIC INTERCONNECT, LOOP DETECTOR
- TRAFFIC SIGNAL, SUSPENDED, CANTILEVERED
- TRAFFIC DEADMAN, MISC. POLE
- TRAFFIC POWER VAULT, CONTROL BOX
- TRAFFIC SIGN, FEDERAL AID MARKER
- PARKING METER, LIGHT STANDARD, VAULT
- TRAFFIC CAMERA POLE, CONTROL BOX, PULL BOX
- TELEPHONE LINE, UNDERGROUND
- TELEPHONE FIBER OPTIC LINE, UNDERGROUND
- TELEPHONE BOOTH, CROSS CONNECT
- TELEPHONE PEDestal, MANHOLE
- TELEPHONE UTILITY MARKER, BORE HOLE
- WATER LINE, UNDERGROUND ABOVEGROUND
- WATER LINE CASING, UNDERGROUND ABOVEGROUND
- FIRE HYDRANT, WATER VALVE VAULT
- WATER METER, CLEANOUT, WELL
- WATER UTILITY MARKER, BORE HOLE
- BILLBOARD SUPPORT, SIGN POLE
- MAILBOX, STORAGE TANK VENT
- FLAGPOLE, MONITORING WELL
- MECHANICAL POINT E.G. A/C COMPRESSOR, PUMP, ETC.
- TOP OF SILT ELEVATION

COMMON SURVEY ABBREVIATIONS

- AC ASBESTOS CONCRETE
- BCS BOTTOM OF STRUCTURE
- CP CORRUGATED METAL PIPE
- CPFP CORRUGATED PLASTIC PIPE
- CPH CONCRETE SIDEWALK
- EDP EDGE OF PAVEMENT
- FCA FIELD CONNECTION ASSUMED
- GA GALVANIZED IRON
- PVC POLYVINYL CHLORIDE ASSUMED
- PCP POLYURETHANE CONCRETE PIPE
- RCFA REINFORCED CONCRETE ARCH PIPE
- STL STEEL
- TC TERRAZZOTA OR CLAY
- TM TOP OF METER
- TOP TOP OF
- TOP OF PILE
- TOP OF VALVE
- UNK UNKNOWN
- UPDC UNKNOWN POINT OF CONNECTION

PROPERTY LINES SHOWN HEREON ARE FOR GRAPHICAL PURPOSES, AND DOES NOT REPRESENT A BOUNDARY SURVEY BY THIS OFFICE

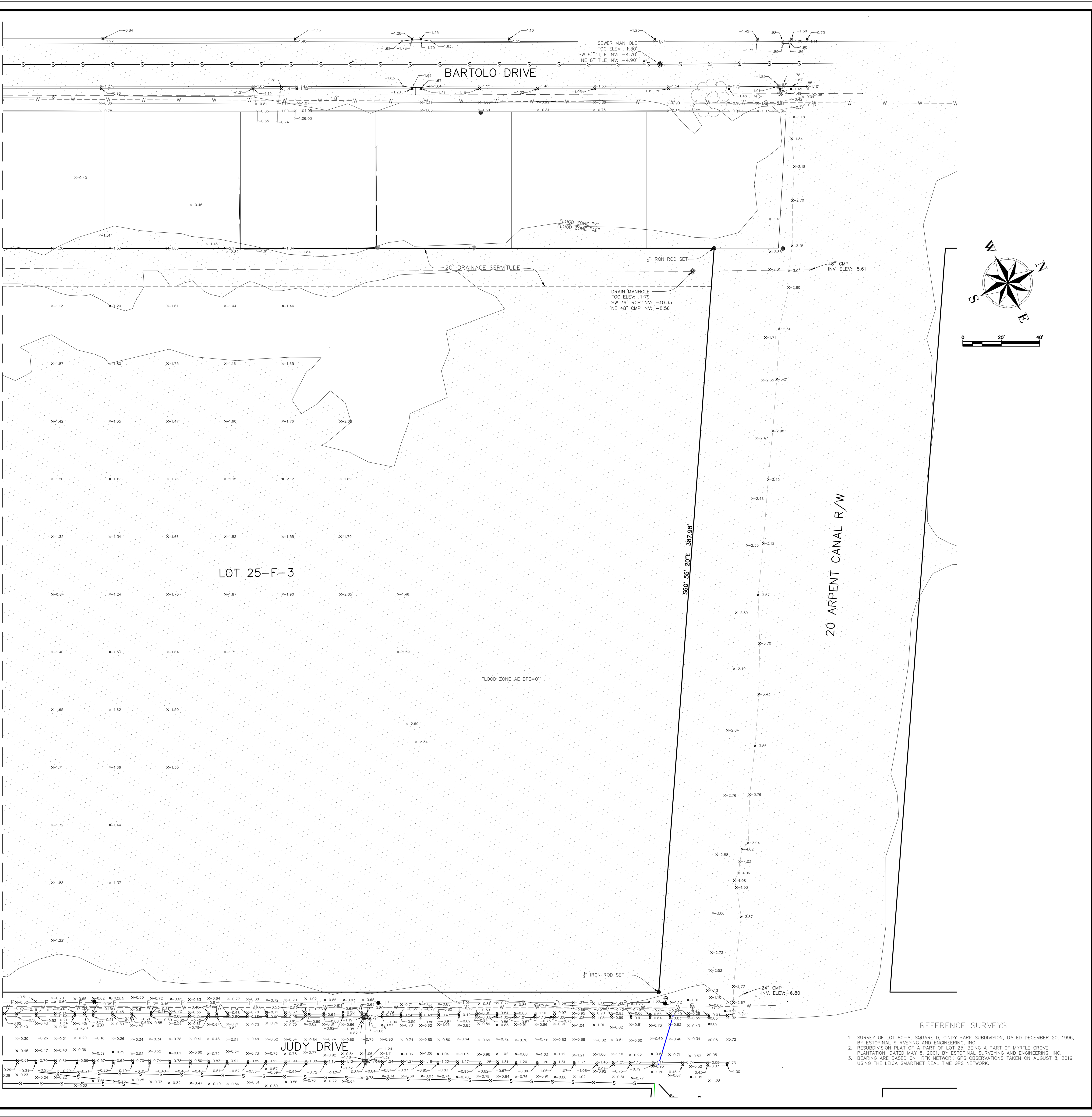
GENERAL NOTES
THE LOCATIONS OF UNDERGROUND AND OTHER NONVISIBLE UTILITIES SHOWN HEREON HAVE BEEN DETERMINED FROM DATA EITHER FURNISHED BY THE AGENCIES CONTROLLING SUCH DATA AND/OR EXTRACTED FROM RECORDS MADE AVAILABLE TO US BY THE AGENCIES CONTROLLING SUCH RECORDS. WHERE FOUND, THE SURFACE FEATURES OF LOCATIONS ARE SHOWN. THE ACTUAL NONVISIBLE LOCATIONS MAY VARY FROM THOSE SHOWN HEREON. EACH AGENCY SHOULD BE CONTACTED RELATIVE TO THE PRECISE LOCATION OF ITS UNDERGROUND INSTALLATION PRIOR TO ANY RELIANCE UPON THE ACCURACY OF SUCH LOCATIONS SHOWN HEREON, INCLUDING PRIOR TO EXCAVATION AND DIGGING.

VERTICAL DATUM BASIS
ELEVATIONS SHOWN ON THIS SURVEY ARE BASED ON THE NORTH AMERICAN VERTICAL DATUM OF 1988 (NAVD8) UTILIZING GEOID TIES. THEY ARE DERIVED FROM GPS OBSERVATIONS REFERENCED TO THE LOUISIANA STATE UNIVERSITY CONTINUOUSLY OPERATING REFERENCE STATIONS (CORS) NETWORK IN ACCORDANCE WITH LOUISIANA R.S. 50:173.1 COVERING VERTICAL CONTROL STANDARDS.

SERVITUDES
THE SERVITUDES AND RESTRICTIONS SHOWN ON THIS SURVEY ARE LIMITED TO THOSE SET FORTH IN THE DESCRIPTION FURNISHED US AND THERE IS NO REPRESENTATION THAT ALL APPLICABLE SERVITUDES AND RESTRICTIONS ARE SHOWN HEREON. THE SURVEYOR HAS MADE NO TITLE SEARCH OR PUBLIC RECORD SEARCH IN COMPILING THE DATA FOR THIS SURVEY.

UTILITY INFORMATION
SUBSURFACE UTILITY INFORMATION SHOWN HEREON, WHICH WAS NOT DERIVED FROM DIRECT FIELD OBSERVATION, WERE TAKEN FROM MUNICIPAL GEOGRAPHIC INFORMATION SYSTEMS (GIS) DATA AVAILABLE. THESE DATA ARE SHOWN TO QUALITY LEVEL 2 STANDARDS, UNLESS OTHERWISE NOTED. GIS-DERIVED SUBSURFACE UTILITIES HAVE NOT BEEN FIELD VERIFIED BY THE SURVEYOR.

SPECIAL FLOOD HAZARD AREA
I HAVE CONSULTED THE FEDERAL INSURANCE ADMINISTRATION FLOOD HAZARD BOUNDARY MAPS AND FOUND THIS PROPERTY IS IN A SPECIAL FLOOD HAZARD AREA.
FIRM ZONE X AND AE
BASE FLOOD ELEVATION: FOR AE 0'
COMMUNITY PANEL NO.: 220270485D AND AE
MAP DATED/REVISED: DECEMBER 21, 2017
THE FLOOD ZONE BOUNDARIES HAVE BEEN DIGITIZED FROM THE FEMA DFM 17 MADE BY COMMUNITY PANEL NO. 220270485D AND ARE SHOWN FOR INFORMATIONAL PURPOSES ONLY. THE ST. BERNARD PARISH FLOOD PLAN MANAGER CAN PROVIDE THE REQUIRED BUILDING ELEVATION.



BOUNDARY AND TOPOGRAPHIC SURVEY OF THE ST. BERNARD PUBLIC LIBRARY SITE, LOT 25-F-3, MYRTLE GROVE PLANTATION, SECTION 2, T 13 S, R 13 E, ST. BERNARD PARISH, LOUISIANA

ST. BERNARD PARISH GOVERNMENT

DATE: 08-27-2019
SCALE: AS SHOWN
JOB NO.: 211-015-01

DESIGNED BY: MBA/ABM
DRAWN BY: Author
SHEET NO.: 2

REVISIONS
DATE: 8/11/20
REMARKS: ADDED 20' DRAINAGE SERVITUDE TO WEST SIDE OF LOT 25-F-3

APP'D: JST

AS ALL SOUTH CONSULTING ENGINEERS, L.L.C.
8825 PARVORTH AVENUE
BIRMINGHAM, AL 35226

Mathes Brierre ARCHITECTS + ENGINEERS
201 St. Charles Avenue, Forty First Floor
New Orleans, Louisiana 70170-4100
Voice: 504.586.9303 Fax: 504.582.1305

300 Heymann Blvd.
Lafayette, Louisiana 70503
337.233.0614

PROJECT TITLE
ST. BERNARD PARISH PUBLIC LIBRARY
ST. BERNARD PARISH

100% CONSTRUCTION DOCUMENTS

DESIGNED BY: MBA/ABM
CHECKED BY: Checker
DATE: 12.20.2021

SHEET TITLE
SITE SURVEY / PRE-SURCHARGE

PROJECT NO.: MBA - 11884
SHEET NO.: G006

No.	Description	Date

KEY PLAN

Mathes Brierre ARCHITECTS + ENGINEERS
201 St. Charles Avenue, Forty First Floor
New Orleans, Louisiana 70170-4100
Voice: 504.586.9303 Fax: 504.582.1305

300 Heymann Blvd.
Lafayette, Louisiana 70503
337.233.0614

PROJECT TITLE
ST. BERNARD PARISH PUBLIC LIBRARY
ST. BERNARD PARISH

100% CONSTRUCTION DOCUMENTS

DESIGNED BY: MBA/ABM
CHECKED BY: Checker
DATE: 12.20.2021

SHEET TITLE
SITE SURVEY / PRE-SURCHARGE

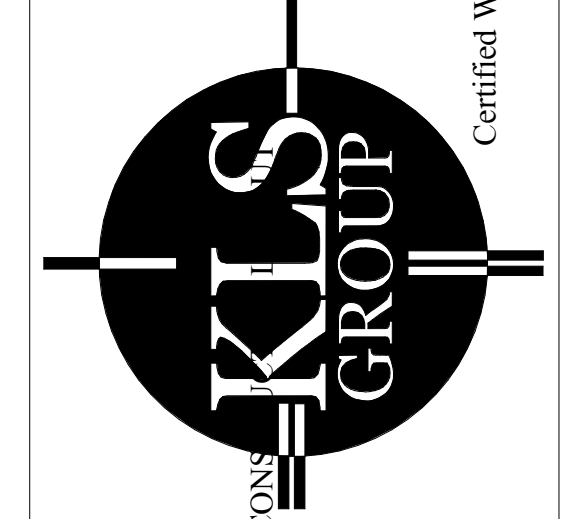
PROJECT NO.: MBA - 11884
SHEET NO.: G006

NOTE:
EXISTING TOPOGRAPHY INFORMATION
INSIDE OF PROPERTY LINE HAS CHANGED
DUE TO INSTALLATION OF SURCHARGE.

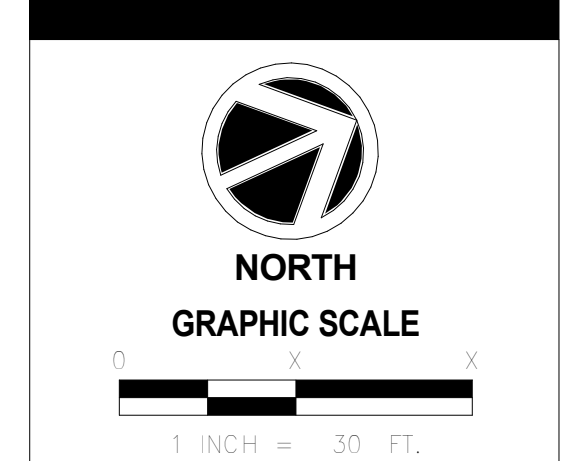
ELEVATION SURVEY OF SURCHARGE AREA, ST BERNARD LIBRARY SITE ST BERNARD, LOUISIANA

SURVEY WORK PREPARED FOR BEVERLY CONSTRUCTION

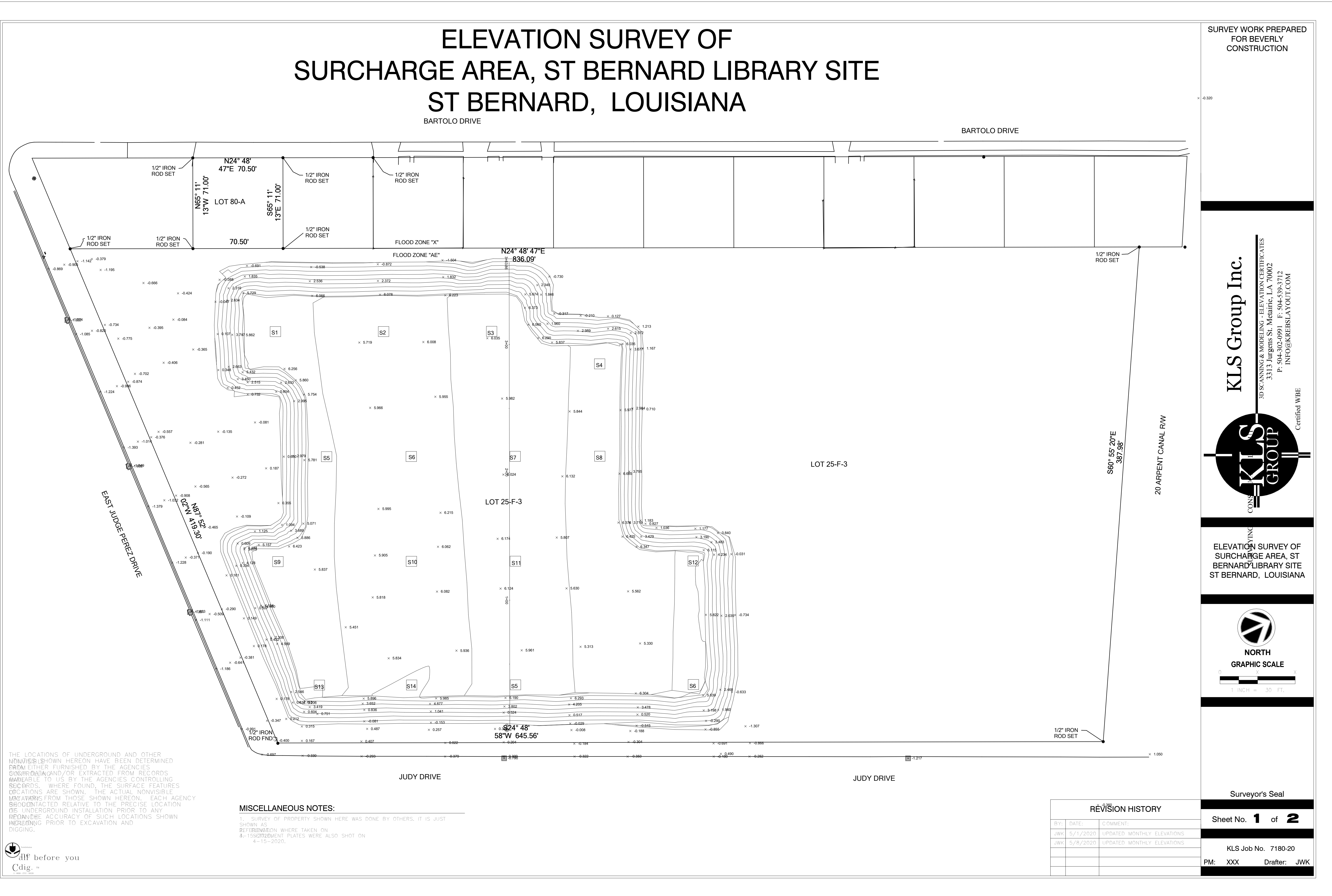
KLS Group Inc.
 3D SCANNING & MODELING - ELEVATION CERTIFICATES
 3313 Jurgens St., Metairie, LA 70002
 P: 504-302-0991 F: 504-539-3712
 INFO@KREBSLAYOUT.COM
 Certified WBE



ELEVATION SURVEY OF SURCHARGE AREA, ST BERNARD LIBRARY SITE ST BERNARD, LOUISIANA



Surveyor's Seal
 Sheet No. **1** of **2**
 KLS Job No. 7180-20
 PM: XXX Drafter: JWK



THE LOCATIONS OF UNDERGROUND AND OTHER NONVISIBLES SHOWN HEREON HAVE BEEN DETERMINED FROM EITHER FURNISHED BY THE AGENCIES CONTROLLING AND/OR EXTRACTED FROM RECORDS AVAILABLE TO US BY THE AGENCIES CONTROLLING RECORDS. WHERE FOUND, THE SURFACE FEATURES LOCATIONS ARE SHOWN. THE ACTUAL NONVISIBLE LOCATIONS FROM THOSE SHOWN HEREON. EACH AGENCY SHOULD CONTACT THE AGENCY CONTROLLING RECORDS TO VERIFY THE ACCURACY OF SUCH LOCATIONS SHOWN HEREON PRIOR TO EXCAVATION AND DIGGING.

MISCELLANEOUS NOTES:
 1. SURVEY OF PROPERTY SHOWN HERE WAS DONE BY OTHERS. IT IS JUST SHOWN AS REFERENCE WHERE TAKEN ON 4-15-2020.
 2. 1/2" IRON ROD SETS WERE ALSO SHOT ON 4-15-2020.

REVISION HISTORY	
BY:	DATE:
JWK	5/1/2020
JWK	5/8/2020



No.	Description	Date

KEY PLAN

Mathes Brierre + BM
 ARCHITECTS ARCHITECTS BEAZLEY MOLIÈRE
 A JOINT VENTURE
 201 St. Charles Avenue, Forty First Floor
 New Orleans, Louisiana 70170-4100
 Voice: 504.586.9303. Fax: 504.582.1305
 300 Heymann Blvd.
 Lafayette, Louisiana 70503
 337.233.0614

PROJECT TITLE
ST. BERNARD PARISH PUBLIC LIBRARY
 ST. BERNARD PARISH

100% CONSTRUCTION DOCUMENTS

DESIGNED BY	Designer	CHECKED BY	Checker
DRAWN BY	Author	DATE	12.20.2021
SHEET TITLE		PROJECT NO.	
SITE SURVEY - EXISTING POST SURCHARGE		SHEET NO.	
MBA - 11884	ABM - 201813	G007	